

**Thematic maps for the
deanery of St John
Southworth**

June 2016

Output area coverage

— Estimated boundaries

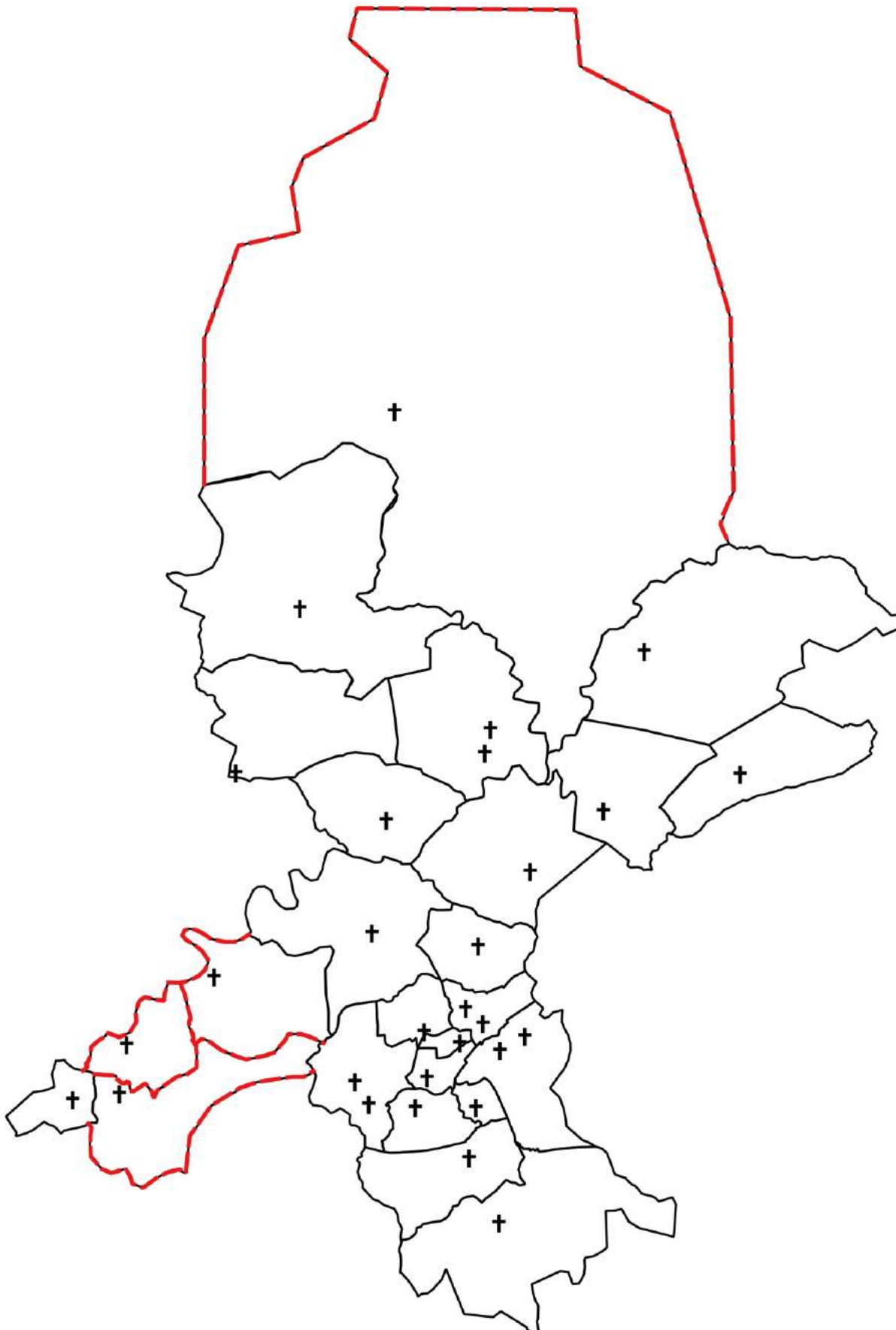
This map shows the output areas used for each parish to produce the estimates. The match is generally good, however there are few instances where it was not possible to align Output Area and parish boundaries - this is mainly the case for more sparsely populated areas.



Location of churches

— Estimated boundaries

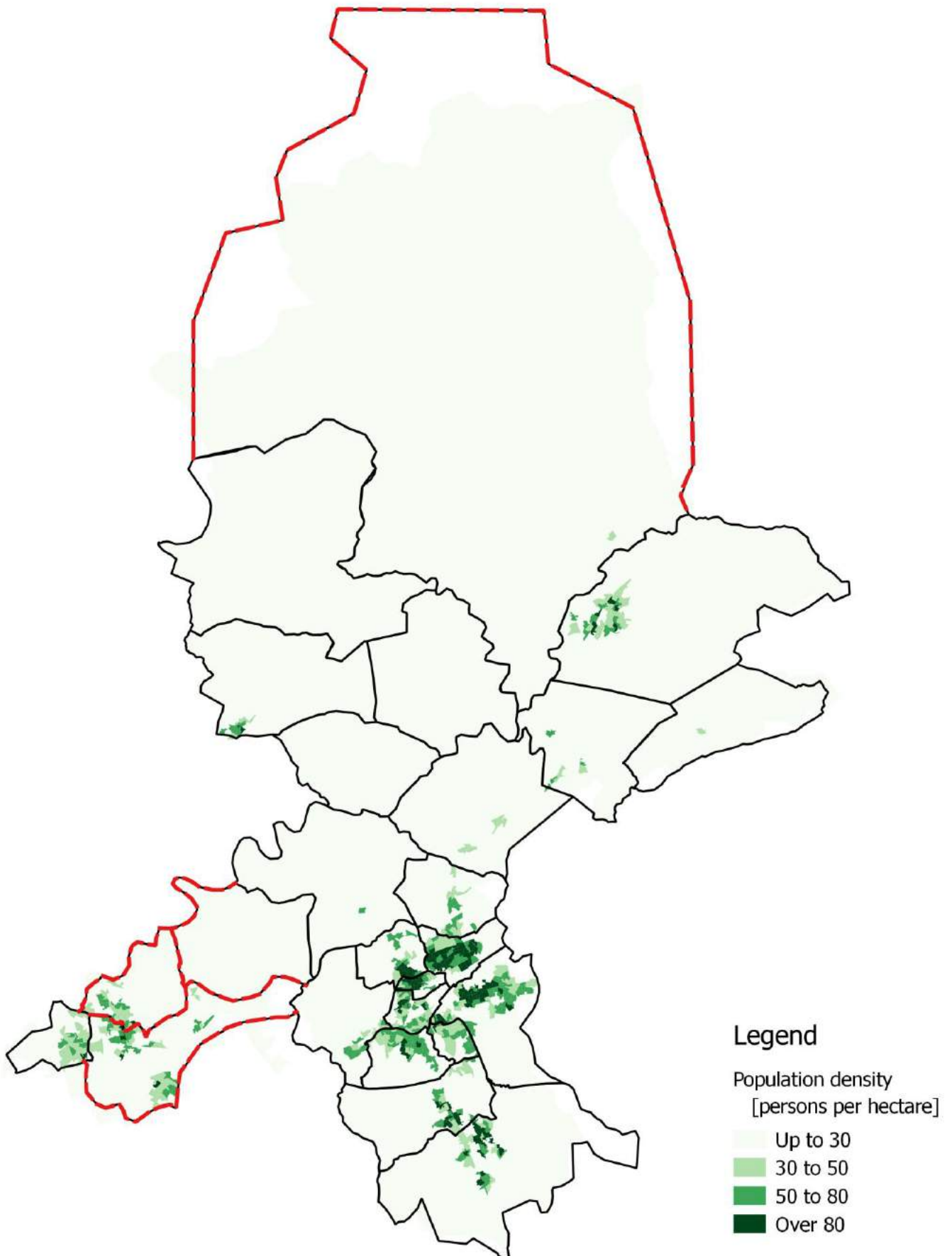
This map shows the location of churches in each parish in the deanery.



Population density

— Estimated boundaries

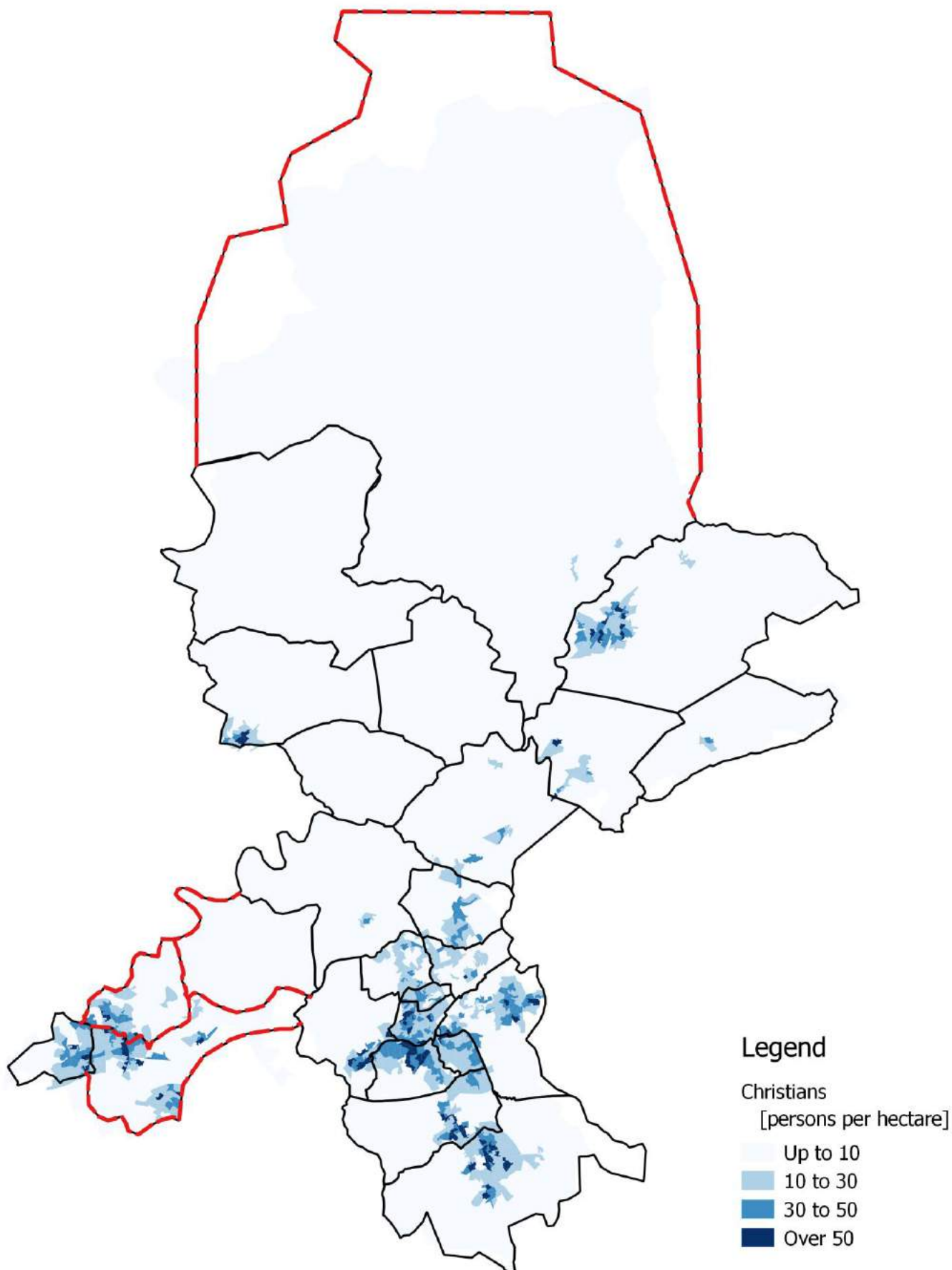
This map shows the population density, based on 2014 population estimate at the Output Area level. The density is expressed on number of persons per hectare.



Christian population

Estimated boundaries

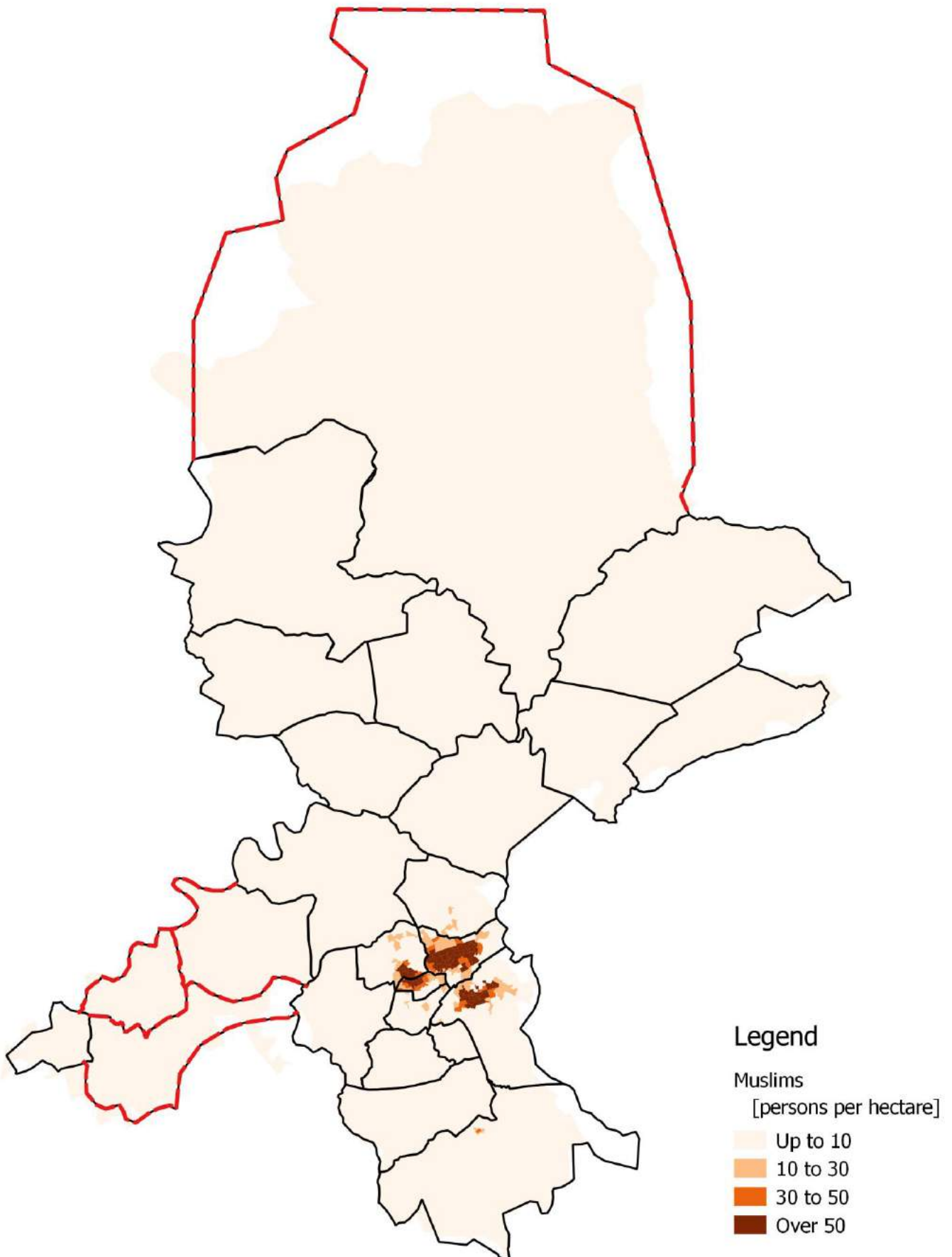
This map shows the Christian population density, based on 2011 Census estimates at the Output Area level. The density is expressed on number of persons per hectare.



Muslim population

Estimated boundaries

This map shows the Muslim population density, based on 2011 Census estimates at the Output Area level. The density is expressed on number of persons per hectare.



Population declaring 'no religion'

Estimated boundaries

This map shows the density of the population declaring 'no religion', based on 2011 Census estimates at the Output Area level. The density is expressed on number of persons per hectare.

