

Deanery of Saint John Southworth

Population analysis at the parish level

May 2016

Table of contents

Introduction	3
Parishes	
<i>English Martyrs, Whalley</i>	4
<i>Holy Family, Blackburn</i>	5
<i>Holy Souls, Blackburn</i>	6
<i>Our Lady and St Gerard Majella, Lostock Hall</i>	7
<i>Our Lady and St Patrick, Walton-le-Dale</i>	8
<i>Our Lady of Perpetual Succor, Blackburn</i>	9
<i>Sacred Heart, Blackburn</i>	10
<i>Sacred Heart and St Edward, Darwen</i>	11
<i>Saints Peter and Paul, Ribchester</i>	12
<i>St Alban and Good Shepherd, Blackburn</i>	13
<i>St Anne, Blackburn</i>	14
<i>St Hubert, Dunsop Bridge</i>	15
<i>St John Vianney, Blackburn</i>	16
<i>St Joseph, Darwen</i>	17
<i>St Mary, Bamber Bridge</i>	18
<i>St Mary, Chipping</i>	19
<i>St Mary, Langho</i>	20
<i>St Mary, Osbaldeston</i>	21
<i>St Mary, Sabden</i>	22
<i>St Mary and St John, Pleasington Priory</i>	23
<i>St Mary and St John Southworth, Samlesbury</i>	24
<i>St Michael and St John, Clitheroe</i>	25
<i>St Peter and St Joseph, Stonyhurst</i>	26
<i>St Peter in Chains, Blackburn</i>	27
<i>St Wilfrid, Longridge</i>	28
Annex A: Maps	29
Annex B: Data limitations	35
Annex C: Data tables	36

Introduction

Purpose

The aim of this report is to give the reader an easy access to key census statistics for selected parishes and hence provide contextual information to help better understand communities served by each parish. The maps in the annex help to view the parish in the context of neighbouring areas.

Report structure

This report presents **summary statistics for each parish** in the deanery of St John Southworth, providing: population estimates, age profile, declared religion, occupation and family situation. The report is complemented by a series of six maps showing, output area coverage, location of church buildings, overall population density (2014) and population density by religion (2011). Maps are included in Annex A. The data limitations are discussed in Annex B and the tables showing data for selected characteristics are shown in Annex C. The parishes are presented in the alphabetical order.

Coverage and boundary

Due to the statistical area and output area shapes, areas matched for one parish¹ actually cover over 115 percent of the parish area. The additional, included area in all cases is a very sparsely populated green area and does not considerably affect presented statistics. Similarly, the parish area not covered in two parishes² with coverage below 80 percent is not a residential area and hence it has negligible effect on the estimates.

Deanery level overview

Overall, the deanery, consisting of **25 parishes**, covers the area of just under 675 square kilometers (67.5k hectares). The 2014 **population size** was estimated at 237.6k, which is very close to the Census 2011 estimate. Majority of usual residents were **aged** between 36 and 64 (38%), followed by those aged 18 to 35. Eleven percent of the population was aged under 7. Sixty-two percent of the population declared their **religion** as Christian, followed by 17 percent declaring Muslim belief and 14 percent declaring 'no religion'.

The **number of households** in the deanery was estimated at 95.7k, of which 24 percent did not have **access to a car** and 29 percent rented their accommodation. Sixty-four percent of all households were occupied by a family, and 30 percent were one person households, with 8 percent of all households being occupied by **a person over 65 living alone**. About 6 percent fell into other category.

It is also worth noting that the between 2001 and 2011, when the overall number of persons in the deanery increased by 7 percent, the Christian population decreased by nearly 8 percent (159.9k to 147.5k). At the same time Muslim population increased by 49 percent, from 27.1k to 40.5k and population declaring 'no religion' increased by 89 percent (from 18.1k to 34.2k).

¹ Parishes with overestimated area: Sacred Heart, Blackburn

² Parishes with underestimated area: English Martyrs, Whalley and St Peter in Chains, Blackburn

English Martyrs, Whalley

Parish Priest: Fr Philip Price

Area & Population

- English Martyrs's parish covers the area of 1,727 hectares, and the average **population density** is 5 persons per hectare.
- The parish population size **is growing**. On 30th June 2014, the total number of usual residents was estimated at 6.3k. This is 5 percent (281 persons) higher than the Census 2011 estimate of 6k.
- Census 2011 estimates the total **number of households** in the parish at 2.5k.

Demographics

- Most of the usual residents (43%) are **aged** between 36 to 64, followed by 19 percent aged over 65, with only 9 percent aged under 7.
- In the parish area, 79 percent of the population declared their **religion** as Christian. Muslims accounted for only 1 percent of the population, and 14 percent of all residents declared 'no religion'. The Christian population **increased significantly, despite** the decrease observed between 2001 and 2011 at the deanery level.
- Most residents in the parish (52%) declared their marital status as: '**married**'.

Economy

- Of the 2011 population 1 percent **arrived** in the UK between 2001 and 2011.
- Most of the people (65%) in the parish declare their main economic activity as '**employed**', followed by 17 percent being a '**retired person**'. Health industry gives employment to the largest proportion of economically active people in this area. Those in employment are mainly engaged in professional roles. Twenty-nine percent of those in employment work less than 30 hours per week.

Families

- Of all households in the parish, 67 percent are occupied by a single **family**, 30 percent are one person households (of which 15 percent are 'single, over 65') and 3 percent falls into 'other' category (mainly shared houses or households with lodgers).
- Of the 'one family' households, 60 percent consist of **married couples**, 13 percent are cohabiting and 13 percent are **lone parents**. Forty-four percent of one family households have dependent children, and 14 percent are families with all members aged over 65.
- In the parish area, 18 percent of households rent their accommodation, and 11 percent **do not** have access to car.

Data coverage & accuracy

- Matched census areas covered 72 percent of the parish area.

Holy Family, Blackburn

Parish Priest: Fr Gerard V Barry

Area & Population

- Holy Family's parish covers the area of 1,232 hectares, and the average **population density** is 21 persons per hectare.
- The parish population size **remains fairly stable**. On 30th June 2014, the total number of usual residents was estimated at 27.3k. This is 1 percent (191 persons) lower than the Census 2011 estimate of 27.5k.
- Census 2011 estimates the total **number of households** in the parish at 10.3k.

Demographics

- Most of the usual residents (33%) are **aged** between 36 to 64, followed by 27 percent aged between 18 and 35, with only 11 percent aged over 65.
- In the parish area, 42 percent of the population declared their **religion** as Christian. Muslims accounted for 38 percent of the population, and 13 percent of all residents declared 'no religion'. The Christian population **decreased in line with** the decrease observed between 2001 and 2011 at the deanery level.
- Most residents in the parish (44%) declared their marital status as: '**married**'.

Economy

- Of the 2011 population 2 percent **arrived** in the UK in two years before the census, and 9 percent arrived between 2001 and 2011.
- Most of the people (49%) in the parish declare their main economic activity as '**employed**', followed by 11 percent being a '**retired person**'. Retail industry gives employment to the largest proportion of economically active people in this area. Those in employment are mainly engaged in elementary occupation roles. Thirty-five percent of those in employment work less than 30 hours per week.

Families

- Of all households in the parish, 60 percent are occupied by a single **family**, 32 percent are one person households (of which 10 percent are 'single, over 65') and 9 percent falls into 'other' category (mainly shared houses or households with lodgers).
- Of the 'one family' households, 53 percent consist of **married couples**, 14.2 percent are cohabiting and 25 percent are **lone parents**. Fifty-six percent of one family households have dependent children, and 8 percent are families with all members aged over 65.
- In the parish area, 47 percent of households rent their accommodation, and 40 percent **do not** have access to car.

Data coverage & accuracy

- Matched census areas covered 107 percent of the parish area.

Holy Souls, Blackburn

Parish Priest: Fr Peter Gerard Knowles

Area & Population

- Holy Souls's parish covers the area of 854 hectares, and the average **population density** is 10 persons per hectare.
- The parish population size **remains fairly stable**. On 30th June 2014, the total number of usual residents was estimated at 9.3k. This is 1 percent (132 persons) lower than the Census 2011 estimate of 9.4k.
- Census 2011 estimates the total **number of households** in the parish at 4.1k.

Demographics

- Most of the usual residents (39%) are **aged** between 36 to 64, followed by 23 percent aged over 65, with only 9 percent aged under 7.
- In the parish area, 72 percent of the population declared their **religion** as Christian. Muslims accounted for 10 percent of the population, and 13 percent of all residents declared 'no religion'. The Christian population **decreased in line with** the decrease observed between 2001 and 2011 at the deanery level.
- Most residents in the parish (50%) declared their marital status as: '**married**'.

Economy

- Of the 2011 population 2 percent **arrived** in the UK between 2001 and 2011.
- Most of the people (62%) in the parish declare their main economic activity as '**employed**', followed by 19 percent being a '**retired person**'. Retail industry gives employment to the largest proportion of economically active people in this area. Those in employment are mainly engaged in professional roles. Twenty-eight percent of those in employment work less than 30 hours per week.

Families

- Of all households in the parish, 62 percent are occupied by a single **family**, 33 percent are one person households (of which 15 percent are 'single, over 65') and 5 percent falls into 'other' category (mainly shared houses or households with lodgers).
- Of the 'one family' households, 53 percent consist of **married couples**, 13 percent are cohabiting and 16 percent are **lone parents**. Thirty-nine percent of one family households have dependent children, and 18 percent are families with all members aged over 65.
- In the parish area, 19 percent of households rent their accommodation, and 19 percent **do not** have access to car.

Data coverage & accuracy

- Matched census areas covered 104 percent of the parish area.

Our Lady and St Gerard Majella, Lostock Hall

Parish Priest: Fr Dom Xavier Ho OSB

Area & Population

- Our Lady and St Gerard Majella's parish covers the area of 478 hectares, and the average **population density** is 21 persons per hectare.
- The parish population size **remains fairly stable**. On 30th June 2014, the total number of usual residents was estimated at 10.6k. This is 1 percent (96 persons) lower than the Census 2011 estimate of 10.7k.
- Census 2011 estimates the total **number of households** in the parish at 4.4k.

Demographics

- Most of the usual residents (42%) are **aged** between 36 to 64, followed by 22 percent aged between 18 and 35, with only 10 percent aged under 7.
- In the parish area, 76 percent of the population declared their **religion** as Christian. Muslims accounted for less than 1 percent of the population, and 17 percent of all residents declared 'no religion'. The Christian population **decreased in line with** the decrease observed between 2001 and 2011 at the deanery level.
- Most residents in the parish (51%) declared their marital status as: '**married**'.

Economy

- Of the 2011 population only 1 percent **arrived** in the UK between 2001 and 2011.
- Most of the people (70%) in the parish declare their main economic activity as '**employed**', followed by 13 percent being a '**retired person**'. Retail industry gives employment to the largest proportion of economically active people in this area. Those in employment are mainly engaged in professional roles. Twenty-seven percent of those in employment work less than 30 hours per week.

Families

- Of all households in the parish, 69 percent are occupied by a single **family**, 26 percent are one person households (of which 10 percent are 'single, over 65') and 5 percent falls into 'other' category (mainly shared houses or households with lodgers).
- Of the 'one family' households, 59 percent consist of **married couples**, 17 percent are cohabiting and 15 percent are **lone parents**. Forty-five percent of one family households have dependent children, and 9 percent are families with all members aged over 65.
- In the parish area, 18 percent of households rent their accommodation, and 15 percent **do not** have access to car.

Data coverage & accuracy

- Matched census areas covered 106 percent of the parish area.

Our Lady and St Patrick, Walton-le-Dale

Parish Priest: ?

Area & Population

- Our Lady and St Patrick's parish covers the area of 855 hectares, and the average **population density** is 14 persons per hectare.
- The parish population size **remains fairly stable**. On 30th June 2014, the total number of usual residents was estimated at 10k.
- Census 2011 estimates the total **number of households** in the parish at 4.2k.

Demographics

- Most of the usual residents (40%) are **aged** between 36 to 64, followed by 24 percent aged between 18 and 35, with only 11 percent aged under 7.
- In the parish area, 75 percent of the population declared their **religion** as Christian. Muslims accounted for 1 percent of the population, and 17 percent of all residents declared 'no religion'. The Christian population **decreased in line with** the decrease observed between 2001 and 2011 at the deanery level.
- Most residents in the parish (48%) declared their marital status as: '**married**'.

Economy

- Of the 2011 population 2 percent **arrived** in the UK between 2001 and 2011.
- Most of the people (71%) in the parish declare their main economic activity as '**employed**', followed by 12 percent being a '**retired person**'. Retail industry gives employment to the largest proportion of economically active people in this area. Those in employment are mainly engaged in professional roles. Twenty-six percent of those in employment work less than 30 hours per week.

Families

- Of all households in the parish, 68 percent are occupied by a single **family**, 27 percent are one person households (of which 10 percent are 'single, over 65') and 5 percent falls into 'other' category (mainly shared houses or households with lodgers).
- Of the 'one family' households, 54 percent consist of **married couples**, 19 percent are cohabiting and 16 percent are **lone parents**. Forty-six percent of one family households have dependent children, and 10 percent are families with all members aged over 65.
- In the parish area, 19 percent of households rent their accommodation, and 15 percent **do not** have access to car.

Data coverage & accuracy

- Matched census areas covered 81 percent of the parish area.

Our Lady of Perpetual Succor, Blackburn

Parish Priest: Fr Gerard V Barry

Area & Population

- Our Lady of Perpetual Succor's parish covers the area of 198 hectares, and the average **population density** is 40 persons per hectare.
- The parish population size **remains fairly stable**. On 30th June 2014, the total number of usual residents was estimated at 7k.
- Census 2011 estimates the total **number of households** in the parish at 2.9k.

Demographics

- Most of the usual residents (37%) are **aged** between 36 to 64, followed by 24 percent aged between 18 and 35, with only 11 percent aged over 65.
- In the parish area, 67 percent of the population declared their **religion** as Christian. Muslims accounted for 3 percent of the population, and 23 percent of all residents declared 'no religion'. The Christian population **decreased in line with** the decrease observed between 2001 and 2011 at the deanery level.
- Most residents in the parish (42%) declared their marital status as: '**single, never married**'.

Economy

- Of the 2011 population 1 percent **arrived** in the UK in two years before the census, and 4 percent arrived between 2001 and 2011.
- Most of the people (55%) in the parish declare their main economic activity as '**employed**', followed by 12 percent being a '**retired person**'. Health industry gives employment to the largest proportion of economically active people in this area. Those in employment are mainly engaged in elementary occupation roles. Twenty-eight percent of those in employment work less than 30 hours per week.

Families

- Of all households in the parish, 61 percent are occupied by a single **family**, 32 percent are one person households (of which 10 percent are 'single, over 65') and 7 percent falls into 'other' category (mainly shared houses or households with lodgers).
- Of the 'one family' households, 42 percent consist of **married couples**, 22 percent are cohabiting and 30 percent are **lone parents**. Fifty-five percent of one family households have dependent children, and 6 percent are families with all members aged over 65.
- In the parish area, 50 percent of households rent their accommodation, and 39 percent **do not** have access to car.

Data coverage & accuracy

- Matched census areas covered 88 percent of the parish area.

Sacred Heart, Blackburn

Parish Priest: Fr James McCartney

Area & Population

- Sacred Heart's parish covers the area of 455 hectares, and the average **population density** is 21 persons per hectare.
- The parish population size **remains fairly stable**. On 30th June 2014, the total number of usual residents was estimated at 11.7k. This is 1 percent (94 persons) higher than the Census 2011 estimate of 11.6k.
- Census 2011 estimates the total **number of households** in the parish at 3.78k.

Demographics

- Most of the usual residents (34%) are **aged** between 36 to 64, followed by 25 percent aged between 18 and 35, with only 12 percent aged under 7.
- In the parish area, 37 percent of the population declared their **religion** as Christian. Muslims accounted for 49 percent of the population, and 7.09 percent of all residents declared 'no religion'. The Christian population **decreased in line with** the decrease observed between 2001 and 2011 at the deanery level.
- Most residents in the parish (57%) declared their marital status as: '**married**'.

Economy

- Of the 2011 population 1 percent **arrived** in the UK in two years before the census, and 6 percent arrived between 2001 and 2011.
- Most of the people (56%) in the parish declare their main economic activity as '**employed**', followed by 12 percent being a '**retired person**'. Retail industry gives employment to the largest proportion of economically active people in this area. Those in employment are mainly engaged in professional roles. A third of those in employment work less than 30 hours per week.

Families

- Of all households in the parish, 65 percent are occupied by a single **family**, 23 percent are one person households (of which 9 percent are 'single, over 65') and 12 percent falls into 'other' category (mainly shared houses or households with lodgers).
- Of the 'one family' households, 70 percent consist of **married couples**, 8 percent are cohabiting and 11 percent are **lone parents**. Forty-nine percent of one family households have dependent children, and 11 percent are families with all members aged over 65.
- In the parish area, 16 percent of households rent their accommodation, and 17 percent **do not** have access to car.

Data coverage & accuracy

- Matched census areas covered 121 percent of the parish area.

Sacred Heart and St Edward, Darwen

Parish Priest: Msgr Peter Wilkinson

Area & Population

- Sacred Heart and St Edward's parish covers the area of 1,263 hectares, and the average **population density** is 13 persons per hectare.
- The parish population size **remains fairly stable**. On 30th June 2014, the total number of usual residents was estimated at 13k.
- Census 2011 estimates the total **number of households** in the parish at 5.56k.

Demographics

- Most of the usual residents (40%) are **aged** between 36 to 64, followed by 22 percent aged between 18 and 35, with only 10 percent aged under 7.
- In the parish area, 72 percent of the population declared their **religion** as Christian. Muslims accounted for 2 percent of the population, and 20 percent of all residents declared 'no religion'. The Christian population **decreased in line with** the decrease observed between 2001 and 2011 at the deanery level.
- Most residents in the parish (45%) declared their marital status as: '**married**'.

Economy

- Of the 2011 population 1 percent **arrived** in the UK between 2001 and 2011.
- Most of the people (63%) in the parish declare their main economic activity as '**employed**', followed by 14 percent being a '**retired person**'. Manufacturing industry gives employment to the largest proportion of economically active people in this area. Those in employment are mainly engaged in administrative roles. A quarter of those in employment work less than 30 hours per week.

Families

- Of all households in the parish, 65 percent are occupied by a single **family**, 30 percent are one person households (of which 11 percent are 'single, over 65') and 5 percent falls into 'other' category (mainly shared houses or households with lodgers).
- Of the 'one family' households, 51 percent consist of **married couples**, 19 percent are cohabiting and 20 percent are **lone parents**. Forty-five percent of one family households have dependent children, and 11 percent are families with all members aged over 65.
- In the parish area, 28 percent of households rent their accommodation, and 26 percent **do not** have access to car.

Data coverage & accuracy

- Matched census areas covered 82 percent of the parish area.

Saints Peter and Paul, Ribchester

Parish Priest: Fr David Foster

Area & Population

- Ss Peter and Paul's parish covers the area of 1,503 hectares, and the average **population density** is 1 persons per hectare.
- The parish population size **remains fairly stable**. On 30th June 2014, the total number of usual residents was estimated at 1.8k.
- Census 2011 estimates the total **number of households** in the parish at 0.7k.

Demographics

- Most of the usual residents (45%) are **aged** between 36 to 64, followed by 19 percent aged over 65, with only 9 percent aged under 7.
- In the parish area, 79 percent of the population declared their **religion** as Christian. Muslims accounted for less than 1 percent of the population, and 15 percent of all residents declared 'no religion'. The Christian population **decreased in line with** the decrease observed between 2001 and 2011 at the deanery level.
- Most residents in the parish (56%) declared their marital status as: '**married**'.

Economy

- Of the 2011 population less than 1 percent **arrived** in the UK between 2001 and 2011.
- Most of the people (71%) in the parish declare their main economic activity as '**employed**', followed by 16 percent being a '**retired person**'. Retail industry gives employment to the largest proportion of economically active people in this area. Those in employment are mainly engaged in professional roles. Thirty-two percent of those in employment work less than 30 hours per week.

Families

- Of all households in the parish, 68 percent are occupied by a single **family**, 26 percent are one person households (of which 11 percent are 'single, over 65') and 6 percent falls into 'other' category (mainly shared houses or households with lodgers).
- Of the 'one family' households, 62 percent consist of **married couples**, 11 percent are cohabiting and 11 percent are **lone parents**. Thirty-eight percent of one family households have dependent children, and 15 percent are families with all members aged over 65.
- In the parish area, 18 percent of households rent their accommodation, and 10 percent **do not** have access to car.

Data coverage & accuracy

- Matched census areas covered 114. percent of the parish area.

St Alban and Good Shepherd, Blackburn

Parish Priest: Canon Jude Harrison and Fr Joseph B O'Carroll

Area & Population

- St Alban and Good Shepherd's parish covers the area of 447 hectares, and the average **population density** is 55 persons per hectare.
- The parish population size **is growing**. On 30th June 2014, the total number of usual residents was estimated at 24.4k. This is 2 percent (386 persons) higher than the Census 2011 estimate of 24k.
- Census 2011 estimates the total **number of households** in the parish at 7.3k.

Demographics

- Most of the usual residents (31%) are **aged** between 36 to 64, followed by 28 percent aged between 18 and 35, with only 9 percent aged over 65.
- In the parish area, 17 percent of the population declared their **religion** as Christian. Muslims accounted for 73 percent of the population, and 4 percent of all residents declared 'no religion'. The Christian population **decreased in line with** the decrease observed between 2001 and 2011 at the deanery level.
- Most residents in the parish (56%) declared their marital status as: '**married**'.

Economy

- Of the 2011 population 2 percent **arrived** in the UK in two years before the census, and 9 percent arrived between 2001 and 2011.
- Most of the people (46%) in the parish declare their main economic activity as '**employed**', followed by 14 percent being a '**mainly occupied by looking after family**'. Retail industry gives employment to the largest proportion of economically active people in this area. Those in employment are mainly engaged in sales roles. Forty-four percent of those in employment work less than 30 hours per week.

Families

- Of all households in the parish, 62 percent are occupied by a single **family**, 24 percent are one person households (of which 9 percent are 'single, over 65') and 13 percent falls into 'other' category (mainly shared houses or households with lodgers).
- Of the 'one family' households, 71 percent consist of **married couples**, 6 percent are cohabiting and 16 percent are **lone parents**. Sixty-one percent of one family households have dependent children, and 6 percent are families with all members aged over 65.
- In the parish area, 33 percent of households rent their accommodation, and 32 percent **do not** have access to car.

Data coverage & accuracy

- Matched census areas covered 100 percent of the parish area.

St Anne, Blackburn

Parish Priest: Fr James McCartney

Area & Population

- St Anne's parish covers the area of 112 hectares, and the average **population density** is 61 persons per hectare.
- The parish population size **remains fairly stable**. On 30th June 2014, the total number of usual residents was estimated at 6.6k.
- Census 2011 estimates the total **number of households** in the parish at 2.61k.

Demographics

- Most of the usual residents (31%) are **aged** between 36 to 64, followed by 30 percent aged between 18 and 35, with only 10 percent aged over 65.
- In the parish area, 33 percent of the population declared their **religion** as Christian. Muslims accounted for 50 percent of the population, and 10 percent of all residents declared 'no religion'. The Christian population **decreased in line with** the decrease observed between 2001 and 2011 at the deanery level.
- Most residents in the parish (43%) declared their marital status as: '**married**'.

Economy

- Of the 2011 population 2 percent **arrived** in the UK in two years before the census, and 13 percent arrived between 2001 and 2011.
- Most of the people (44%) in the parish declare their main economic activity as '**employed**', followed by 11 percent being a '**long term sick or disabled person (not in employment)**'. Retail industry gives employment to the largest proportion of economically active people in this area. Those in employment are mainly engaged in management roles. Forty-one percent of those in employment work less than 30 hours per week.

Families

- Of all households in the parish, 48 percent are occupied by a single **family**, 42 percent are one person households (of which 13 percent are 'single, over 65') and 10 percent falls into 'other' category (mainly shared houses or households with lodgers).
- Of the 'one family' households, 59 percent consist of **married couples**, 12 percent are cohabiting and 24 percent are **lone parents**. Sixty-two percent of one family households have dependent children, and 5 percent are families with all members aged over 65.
- In the parish area, 56.3 percent of households rent their accommodation, and 51 percent **do not** have access to car.

Data coverage & accuracy

- Matched census areas covered 97 percent of the parish area.

St Hubert, Dunsop Bridge

Parish Priest: Msgr John Chaloner

Area & Population

- St Hubert's parish covers the area of 30,000 hectares, and the average **population density** is less than 1 person per hectare.
- The parish population size **remains fairly stable**. On 30th June 2014, the total number of usual residents was estimated at 4.1k. This is 1 percent (50 persons) higher than the Census 2011 estimate of 4k.
- Census 2011 estimates the total **number of households** in the parish at 1.7k.

Demographics

- Most of the usual residents (46%) are **aged** between 36 to 64, followed by 23 percent aged over 65, with only 7 percent aged under 7.
- In the parish area, 80 percent of the population declared their **religion** as Christian. Muslims accounted for less than 1 percent of the population, and 13 percent of all residents declared 'no religion'. The Christian population **size remained constant** the decrease observed between 2001 and 2011 at the deanery level.
- Most residents in the parish (62%) declared their marital status as: '**married**'.

Economy

- Of the 2011 population 1 percent **arrived** in the UK between 2001 and 2011.
- Most of the people (68%) in the parish declare their main economic activity as '**employed**', followed by 21 percent being a '**retired person**'. Manufacturing industry gives employment to the largest proportion of economically active people in this area. Those in employment are mainly engaged in skilled occupation roles. Thirty percent of those in employment work less than 30 hours per week.

Families

- Of all households in the parish, 70 percent are occupied by a single **family**, 27 percent are one person households (of which 14 percent are 'single, over 65') and 3 percent falls into 'other' category (mainly shared houses or households with lodgers).
- Of the 'one family' households, 63 percent consist of **married couples**, 11 percent are cohabiting and 7 percent are **lone parents**. Thirty-two percent of one family households have dependent children, and 18 percent are families with all members aged over 65.
- In the parish area, 27 percent of households rent their accommodation, and 8 percent **do not** have access to car.

Data coverage & accuracy

- Matched census areas covered 80 percent of the parish area.

St John Vianney, Blackburn

Parish Priest: Fr Anthony Dutton

Area & Population

- St John Vianney's parish covers the area of 544 hectares, and the average **population density** is 32 persons per hectare.
- The parish population size **remains fairly stable**. On 30th June 2014, the total number of usual residents was estimated at 13.9k.
- Census 2011 estimates the total **number of households** in the parish at 5.78k.

Demographics

- Most of the usual residents (41%) are **aged** between 36 to 64, followed by 20 percent aged between 18 and 35, with only 11 percent aged under 7.
- In the parish area, 77 percent of the population declared their **religion** as Christian. Muslims accounted for 1 percent of the population, and 16 percent of all residents declared 'no religion'. The Christian population **increased slightly, despite** the decrease observed between 2001 and 2011 at the deanery level.
- Most residents in the parish (48%) declared their marital status as: '**married**'.

Economy

- Of the 2011 population 1 percent **arrived** in the UK between 2001 and 2011.
- Most of the people (64%) in the parish declare their main economic activity as '**employed**', followed by 14 percent being a '**retired person**'. Manufacturing industry gives employment to the largest proportion of economically active people in this area. Those in employment are mainly engaged in professional roles. Twenty-six percent of those in employment work less than 30 hours per week.

Families

- Of all households in the parish, 68 percent are occupied by a single **family**, 28.4 percent are one person households (of which 11 percent are 'single, over 65') and 4 percent falls into 'other' category (mainly shared houses or households with lodgers).
- Of the 'one family' households, 52 percent consist of **married couples**, 17 percent are cohabiting and 19 percent are **lone parents**. Forty-seven percent of one family households have dependent children, and 11 percent are families with all members aged over 65.
- In the parish area, 25 percent of households rent their accommodation, and 23 percent **do not** have access to car.

Data coverage & accuracy

- Matched census areas covered 81 percent of the parish area.

St Joseph, Darwen

Parish Priest: Msgr Peter Wilkinson

Area & Population

- St Joseph's parish covers the area of 3,064 hectares, and the average **population density** is 8 persons per hectare.
- The parish population size **remains fairly stable**. On 30th June 2014, the total number of usual residents was estimated at 19.7k. This is 3 percent (550 persons) lower than the Census 2011 estimate of 20.3k.
- Census 2011 estimates the total **number of households** in the parish at 8.9k.

Demographics

- Most of the usual residents (41%) are **aged** between 36 to 64, followed by 23 percent aged between 18 and 35, with only 10 percent aged under 7.
- In the parish area, 69 percent of the population declared their **religion** as Christian. Muslims accounted for 3 percent of the population, and 21 percent of all residents declared 'no religion'. The Christian population **decreased in line with** the decrease observed between 2001 and 2011 at the deanery level.
- Most residents in the parish (45%) declared their marital status as: '**married**'.

Economy

- Of the 2011 population 2 percent **arrived** in the UK between 2001 and 2011.
- Most of the people (62%) in the parish declare their main economic activity as '**employed**', followed by 14 percent being a '**retired person**'. Manufacturing industry gives employment to the largest proportion of economically active people in this area. Those in employment are mainly engaged in professional roles. Twenty-seven percent of those in employment work less than 30 hours per week.

Families

- Of all households in the parish, 62 percent are occupied by a single **family**, 32 percent are one person households (of which 11 percent are 'single, over 65') and 6 percent falls into 'other' category (mainly shared houses or households with lodgers).
- Of the 'one family' households, 51 percent consist of **married couples**, 19 percent are cohabiting and 20 percent are **lone parents**. Forty-four percent of one family households have dependent children, and 10 percent are families with all members aged over 65.
- In the parish area, 31 percent of households rent their accommodation, and 28.6 percent **do not** have access to car.

Data coverage & accuracy

- Matched census areas covered 86 percent of the parish area.

St Mary, Bamber Bridge

Parish Priest: Fr George Corrie OSB and Fr Cassian Dickie OSB

Area & Population

- St Mary's parish covers the area of 1,740 hectares, and the average **population density** is 12 persons per hectare.
- The parish population size **remains fairly stable**. On 30th June 2014, the total number of usual residents was estimated at 21.6k. This is 1 percent (126 persons) lower than the Census 2011 estimate of 21.7k.
- Census 2011 estimates the total **number of households** in the parish at 9.44k.

Demographics

- Most of the usual residents (40%) are **aged** between 36 to 64, followed by 21 percent aged between 18 and 35, with only 8 percent aged under 7.
- In the parish area, 76 percent of the population declared their **religion** as Christian. Muslims accounted for less than 1 percent of the population, and 17 percent of all residents declared 'no religion'. The Christian population **decreased in line with** the decrease observed between 2001 and 2011 at the deanery level.
- Most residents in the parish (49%) declared their marital status as: '**married**'.

Economy

- Of the 2011 population 1 percent **arrived** in the UK in two years before the census, and 2 percent arrived between 2001 and 2011.
- Most of the people (64%) in the parish declare their main economic activity as '**employed**', followed by 18 percent being a '**retired person**'. Retail industry gives employment to the largest proportion of economically active people in this area. Those in employment are mainly engaged in professional roles. Twenty-eight percent of those in employment work less than 30 hours per week.

Families

- Of all households in the parish, 65 percent are occupied by a single **family**, 30 percent are one person households (of which 14 percent are 'single, over 65') and 5 percent falls into 'other' category (mainly shared houses or households with lodgers).
- Of the 'one family' households, 52 percent consist of **married couples**, 16 percent are cohabiting and 16 percent are **lone parents**. Thirty-eight percent of one family households have dependent children, and 16 percent are families with all members aged over 65.
- In the parish area, 27 percent of households rent their accommodation, and 19 percent **do not** have access to car.

Data coverage & accuracy

- Matched census areas covered 102 percent of the parish area.

St Mary, Chipping

Parish Priest: Fr Anthony Grimshaw

Area & Population

- St Mary's parish covers the area of 4,952 hectares, and the average **population density** is less than 1 person per hectare.
- The parish population size **is growing**. On 30th June 2014, the total number of usual residents was estimated at 1.3k. This is 5 percent (63 persons) higher than the Census 2011 estimate of 1.2k.
- Census 2011 estimates the total **number of households** in the parish at 0.5k.

Demographics

- Most of the usual residents (46%) are **aged** between 36 to 64, followed by 20 percent aged over 65, with only 6 percent aged under 7.
- In the parish area, 83 percent of the population declared their **religion** as Christian. Muslims accounted for less than 1 percent of the population, and 11 percent of all residents declared 'no religion'. The Christian population **size remained constant** the decrease observed between 2001 and 2011 at the deanery level.
- Most residents in the parish (62%) declared their marital status as: '**married**'.

Economy

- Of the 2011 population 1 percent **arrived** in the between 2001 and 2011.
- Most of the people (70%) in the parish declare their main economic activity as '**employed**', followed by 18 percent being a '**retired person**'. Retail industry gives employment to the largest proportion of economically active people in this area. Those in employment are mainly engaged in skilled occupation roles. Twenty-eight percent of those in employment work less than 30 hours per week.

Families

- Of all households in the parish, 75 percent are occupied by a single **family**, 20 percent are one person households (of which 11 percent are 'single, over 65') and 5 percent falls into 'other' category (mainly shared houses or households with lodgers).
- Of the 'one family' households, 63 percent consist of **married couples**, 8 percent are cohabiting and 13 percent are **lone parents**. Thirty-four percent of one family households have dependent children, and 16 percent are families with all members aged over 65.
- In the parish area, 18 percent of households rent their accommodation, and 6 percent **do not** have access to car.

Data coverage & accuracy

- Matched census areas covered 84 percent of the parish area.

St Mary, Langho

Parish Priest: Fr Leo Heakin

Area & Population

- St Mary's parish covers the area of 2,147 hectares, and the average **population density** is 3 persons per hectare.
- The parish population size **remains fairly stable**. On 30th June 2014, the total number of usual residents was estimated at 6.3k.
- Census 2011 estimates the total **number of households** in the parish at 2.5k.

Demographics

- Most of the usual residents (44%) are **aged** between 36 to 64, followed by 20 percent aged over 65, with only 7 percent aged under 7.
- In the parish area, 80 percent of the population declared their **religion** as Christian. Muslims accounted for 1 percent of the population, and 12 percent of all residents declared 'no religion'. The Christian population **increased slightly, despite** the decrease observed between 2001 and 2011 at the deanery level.
- Most residents in the parish (63%) declared their marital status as: '**married**'.

Economy

- Of the 2011 population 1 percent **arrived** in the between 2001 and 2011.
- Most of the people (65%) in the parish declare their main economic activity as '**employed**', followed by 21 percent being a '**retired person**'. Retail industry gives employment to the largest proportion of economically active people in this area. Those in employment are mainly engaged in professional roles. Thirty percent of those in employment work less than 30 hours per week.

Families

- Of all households in the parish, 74 percent are occupied by a single **family**, 22 percent are one person households (of which 11 percent are 'single, over 65') and 4 percent falls into 'other' category (mainly shared houses or households with lodgers).
- Of the 'one family' households, 63 percent consist of **married couples**, 9 percent are cohabiting and 9 percent are **lone parents**. Forty percent of one family households have dependent children, and 19 percent are families with all members aged over 65.
- In the parish area, 9 percent of households rent their accommodation, and 6 percent **do not** have access to car.

Data coverage & accuracy

- Matched census areas covered 103 percent of the parish area.

St Mary, Osbaldeston

Parish Priest: Fr Canon Charles A Dorran

Area & Population

- St Mary's parish covers the area of 2,349 hectares, and the average **population density** is 1 persons per hectare.
- The parish population size **is growing**. On 30th June 2014, the total number of usual residents was estimated at 3.2k. This is 2 percent (62 persons) higher than the Census 2011 estimate of 3.1k.
- Census 2011 estimates the total **number of households** in the parish at 1.4k.

Demographics

- Most of the usual residents (44%) are **aged** between 36 to 64, followed by 24 percent aged over 65, with only 6 percent aged under 7.
- In the parish area, 83 percent of the population declared their **religion** as Christian. Muslims accounted for 1 percent of the population, and 10 percent of all residents declared 'no religion'. The Christian population **size remained constant** the decrease observed between 2001 and 2011 at the deanery level.
- Most residents in the parish (59%) declared their marital status as: '**married**'.

Economy

- Of the 2011 population 1 percent **arrived** in the UK between 2001 and 2011.
- Most of the people (68%) in the parish declare their main economic activity as '**employed**', followed by 20 percent being a '**retired person**'. Health industry gives employment to the largest proportion of economically active people in this area. Those in employment are mainly engaged in professional roles. Thirty percent of those in employment work less than 30 hours per week.

Families

- Of all households in the parish, 69 percent are occupied by a single **family**, 28.4 percent are one person households (of which 16 percent are 'single, over 65') and 4 percent falls into 'other' category (mainly shared houses or households with lodgers).
- Of the 'one family' households, 61 percent consist of **married couples**, 9 percent are cohabiting and 11 percent are **lone parents**. Thirty-five percent of one family households have dependent children, and 19 percent are families with all members aged over 65.
- In the parish area, 14 percent of households rent their accommodation, and 8 percent **do not** have access to car.

Data coverage & accuracy

- Matched census areas covered 102 percent of the parish area.

St Mary, Sabden

Parish Priest: Fr Msgr John Corcoran and Fr Frank Mulgrew

Area & Population

- St Mary's parish covers the area of 1624 hectares, and the average **population density** is 1 persons per hectare.
- The parish population size **is growing**. On 30th June 2014, the total number of usual residents was estimated at 1.7k. This is 4 percent (61 persons) higher than the Census 2011 estimate of 1.7k.
- Census 2011 estimates the total **number of households** in the parish at 0.7k.

Demographics

- Most of the usual residents (47%) are **aged** between 36 to 64, followed by 17 percent aged over 65, with only 9 percent aged under 7.
- In the parish area, 76 percent of the population declared their **religion** as Christian. Muslims accounted for less than 1 percent of the population, and 17 percent of all residents declared 'no religion'. The Christian population **decreased in line with** the decrease observed between 2001 and 2011 at the deanery level.
- Most residents in the parish (56 %) declared their marital status as: '**married**'.

Economy

- Of the 2011 population 1 percent **arrived** in the UK between 2001 and 2011.
- Most of the people (69%) in the parish declare their main economic activity as '**employed**', followed by 18 percent being a '**retired person**'. Retail industry gives employment to the largest proportion of economically active people in this area. Those in employment are mainly engaged in professional roles. Twenty-eight percent of those in employment work less than 30 hours per week.

Families

- Of all households in the parish, 70 percent are occupied by a single **family**, 28 percent are one person households (of which 12 percent are 'single, over 65') and 2 percent falls into 'other' category (mainly shared houses or households with lodgers).
- Of the 'one family' households, 62 percent consist of **married couples**, 14 percent are cohabiting and 12 percent are **lone parents**. Forty-one percent of one family households have dependent children, and 12 percent are families with all members aged over 65.
- In the parish area, 19 percent of households rent their accommodation, and 13 percent **do not** have access to car.

Data coverage & accuracy

- Matched census areas covered 101 percent of the parish area.

St Mary and St John, Pleasington Priory

Parish Priest: ?

Area & Population

- St Mary and St John's parish covers the area of 1,117 hectares, and the average **population density** is 5 persons per hectare.
- The parish population size **remains fairly stable**. On 30th June 2014, the total number of usual residents was estimated at 5.8k. This is 2 percent (146 persons) lower than the Census 2011 estimate of 6k.
- Census 2011 estimates the total **number of households** in the parish at 2.5k.

Demographics

- Most of the usual residents (44%) are **aged** between 36 to 64, followed by 23 percent aged over 65, with only 7 percent aged under 7.
- In the parish area, 84 percent of the population declared their **religion** as Christian. Muslims accounted for 1 percent of the population, and 10 percent of all residents declared 'no religion'. The Christian population **decreased in line with** the decrease observed between 2001 and 2011 at the deanery level.
- Most residents in the parish (56%) declared their marital status as: '**married**'.

Economy

- Of the 2011 population less than 1 percent **arrived** in the UK between 2001 and 2011.
- Most of the people (65%) in the parish declare their main economic activity as '**employed**', followed by 21 percent being a '**retired person**'. Manufacturing industry gives employment to the largest proportion of economically active people in this area. Those in employment are mainly engaged in professional roles. Twenty-seven percent of those in employment work less than 30 hours per week.

Families

- Of all households in the parish, 73 percent are occupied by a single **family**, 24 percent are one person households (of which 14 percent are 'single, over 65') and 3 percent falls into 'other' category (mainly shared houses or households with lodgers).
- Of the 'one family' households, 56 percent consist of **married couples**, 11 percent are cohabiting and 14 percent are **lone parents**. Thirty-five percent of one family households have dependent children, and 19 percent are families with all members aged over 65.
- In the parish area, 10 percent of households rent their accommodation, and 12 percent **do not** have access to car.

Data coverage & accuracy

- Matched census areas covered 99 percent of the parish area.

St Mary and St John Southworth, Samlesbury

Parish Priest: ?

Area & Population

- St Mary and St John Southworth's parish covers the area of 1,713 hectares, and the average **population density** is 1 persons per hectare.
- The parish population size **remains fairly stable**. On 30th June 2014, the total number of usual residents was estimated at 1.2k.
- Census 2011 estimates the total **number of households** in the parish at 0.5k.

Demographics

- Most of the usual residents (47%) are **aged** between 36 to 64, followed by 19 percent aged over 65, with only 7 percent aged under 7.
- In the parish area, 81 percent of the population declared their **religion** as Christian. Muslims accounted for 1 percent of the population, and 12 percent of all residents declared 'no religion'. The Christian population **increased significantly, despite** the decrease observed between 2001 and 2011 at the deanery level.
- Most residents in the parish (59%) declared their marital status as: '**married**'.

Economy

- Of the 2011 population less than 1 percent **arrived** in the UK between 2001 and 2011.
- Most of the people (68%) in the parish declare their main economic activity as '**employed**', followed by 15 percent being a '**retired person**'. Retail industry gives employment to the largest proportion of economically active people in this area. Those in employment are mainly engaged in professional roles. A quarter of those in employment work less than 30 hours per week.

Families

- Of all households in the parish, 72 percent are occupied by a single **family**, 21 percent are one person households (of which 11 percent are 'single, over 65') and 6 percent falls into 'other' category (mainly shared houses or households with lodgers).
- Of the 'one family' households, 59 percent consist of **married couples**, 12 percent are cohabiting and 9 percent are **lone parents**. A third of one family households have dependent children, and 20 percent are families with all members aged over 65.
- In the parish area, 12 percent of households rent their accommodation, and 6 percent **do not** have access to car.

Data coverage & accuracy

- Matched census areas covered 117 percent of the parish area.

St Michael and St John, Clitheroe

Parish Priest: Fr Msgr John Corcoran and Frank Mulgrew

Area & Population

- St Michael and St John's parish covers the area of 4,521 hectares, and the average **population density** is 4 persons per hectare.
- The parish population size **is growing**. On 30th June 2014, the total number of usual residents was estimated at 16.7k. This is 2 percent (253 persons) higher than the Census 2011 estimate of 16.4k.
- Census 2011 estimates the total **number of households** in the parish at 7.3k.

Demographics

- Most of the usual residents (40%) are **aged** between 36 to 64, followed by 20 percent aged over 65, with only 9 percent aged under 7.
- In the parish area, 74 percent of the population declared their **religion** as Christian. Muslims accounted for 1 percent of the population, and 18 percent of all residents declared 'no religion'. The Christian population **decreased in line with** the decrease observed between 2001 and 2011 at the deanery level.
- Most residents in the parish (49%) declared their marital status as: '**married**'.

Economy

- Of the 2011 population 2 percent **arrived** in the UK between 2001 and 2011.
- Most of the people (67%) in the parish declare their main economic activity as '**employed**', followed by 17 percent being a '**retired person**'. Retail industry gives employment to the largest proportion of economically active people in this area. Those in employment are mainly engaged in professional roles. Thirty percent of those in employment work less than 30 hours per week.

Families

- Of all households in the parish, 62 percent are occupied by a single **family**, 34 percent are one person households (of which 15 percent are 'single, over 65') and 4 percent falls into 'other' category (mainly shared houses or households with lodgers).
- Of the 'one family' households, 53 percent consist of **married couples**, 16 percent are cohabiting and 16 percent are **lone parents**. Forty-one percent of one family households have dependent children, and 15 percent are families with all members aged over 65.
- In the parish area, 28 percent of households rent their accommodation, and 21 percent **do not** have access to car.

Data coverage & accuracy

- Matched census areas covered 100 percent of the parish area.

St Peter and St Joseph, Stonyhurst

Parish Priest: ?

Area & Population

- St Peter and St Joseph's parish covers the area of 2,236 hectares, and the average **population density** is less than 1 person per hectare.
- The parish population size **is shrinking**. On 30th June 2014, the total number of usual residents was estimated at 1.3k.
- Census 2011 estimates the total **number of households** in the parish at 0.4k.

Demographics

- Most of the usual residents (34%) are **aged** between 36 to 64, followed by 28 percent aged between 8 and 17, with only 6 percent aged under 7.
- In the parish area, 79 percent of the population declared their **religion** as Christian. Muslims accounted for less than 1 percent of the population, and 13 percent of all residents declared 'no religion'. The Christian population **decreased in line with** the decrease observed between 2001 and 2011 at the deanery level.
- Most residents in the parish (49%) declared their marital status as: '**married**'.

Economy

- Of the 2011 population 9 percent **arrived** in the UK in two years before the census, and 14 percent arrived between 2001 and 2011.
- Most of the people (59%) in the parish declare their main economic activity as '**employed**', followed by 23 percent being a '**student**'. Education industry gives employment to the largest proportion of economically active people in this area. Those in employment are mainly engaged in professional roles. A quarter of those in employment work less than 30 hours per week.

Families

- Of all households in the parish, 67 percent are occupied by a single **family**, 28 percent are one person households (of which 13 percent are 'single, over 65') and 5 percent falls into 'other' category (mainly shared houses or households with lodgers).
- Of the 'one family' households, 64 percent consist of **married couples**, 10 percent are cohabiting and 9 percent are **lone parents**. Forty-one percent of one family households have dependent children, and 17 percent are families with all members aged over 65.
- In the parish area, 32 percent of households rent their accommodation, and 8 percent **do not** have access to car.

Data coverage & accuracy

- Matched census areas covered 113. percent of the parish area.

St Peter in Chains, Blackburn

Parish Priest: Fr Anthony Dutton and Fr Francis Webster MHM

Area & Population

- St Peter in Chains's parish covers the area of 247 hectares, and the average **population density** is 44 persons per hectare.
- The parish population size **is shrinking**. On 30th June 2014, the total number of usual residents was estimated at 8.6k. This is 3 percent (221 persons) lower than the Census 2011 estimate of 8.8k.
- Census 2011 estimates the total **number of households** in the parish at 3.89k.

Demographics

- Most of the usual residents (35%) are **aged** between 36 to 64, followed by 27 percent aged between 18 and 35, with only 12 percent aged over 65.
- In the parish area, 67 percent of the population declared their **religion** as Christian. Muslims accounted for 6 percent of the population, and 20 percent of all residents declared 'no religion'. The Christian population **decreased in line with** the decrease observed between 2001 and 2011 at the deanery level.
- Most residents in the parish (44%) declared their marital status as: '**single, never married**'.

Economy

- Of the 2011 population 1 percent **arrived** in the UK in two years before the census, and 5 percent arrived between 2001 and 2011.
- Most of the people (56%) in the parish declare their main economic activity as '**employed**', followed by 12 percent being a '**retired person**'. Health industry gives employment to the largest proportion of economically active people in this area. Those in employment are mainly engaged in elementary occupation roles. Thirty percent of those in employment work less than 30 hours per week.

Families

- Of all households in the parish, 55 percent are occupied by a single **family**, 38 percent are one person households (of which 12 percent are 'single, over 65') and 7 percent falls into 'other' category (mainly shared houses or households with lodgers).
- Of the 'one family' households, 39 percent consist of **married couples**, 23 percent are cohabiting and 28 percent are **lone parents**. Fifty-three percent of one family households have dependent children, and 8 percent are families with all members aged over 65.
- In the parish area, 47 percent of households rent their accommodation, and 43 percent **do not** have access to car.

Data coverage & accuracy

- Matched census areas covered 79 percent of the parish area.

St Wilfrid, Longridge

Parish Priest: Fr David Chinnery

Area & Population

- St Wilfrid's parish covers the area of 2,096 hectares, and the average **population density** is 2 persons per hectare.
- The parish population size **is growing**. On 30th June 2014, the total number of usual residents was estimated at 4.5k. This is 3 percent (150 persons) higher than the Census 2011 estimate of 4.3k.
- Census 2011 estimates the total **number of households** in the parish at 1.9k.

Demographics

- Most of the usual residents (41%) are **aged** between 36 to 64, followed by 20 percent aged over 65, with only 9 percent aged under 7.
- In the parish area, 80 percent of the population declared their **religion** as Christian. Muslims accounted for less than 1 percent of the population, and 14 percent of all residents declared 'no religion'. The Christian population **decreased in line with** the decrease observed between 2001 and 2011 at the deanery level.
- Most residents in the parish (48%) declared their marital status as: '**married**'.

Economy

- Of the 2011 population 1 percent **arrived** in the UK between 2001 and 2011.
- Most of the people (69%) in the parish declare their main economic activity as '**employed**', followed by 17 percent being a '**retired person**'. Retail industry gives employment to the largest proportion of economically active people in this area. Those in employment are mainly engaged in professional roles. Twenty-six percent of those in employment work less than 30 hours per week.

Families

- Of all households in the parish, 62 percent are occupied by a single **family**. A third are one person households (of which 16 percent are 'single, over 65') and 5 percent falls into 'other' category (mainly shared houses or households with lodgers).
- Of the 'one family' households, 54 percent consist of **married couples**, 18 percent are cohabiting and 14 percent are **lone parents**. Thirty-nine percent of one family households have dependent children, and 14 percent are families with all members aged over 65.
- In the parish area, 26 percent of households rent their accommodation, and 19 percent **do not** have access to car.

Data coverage & accuracy

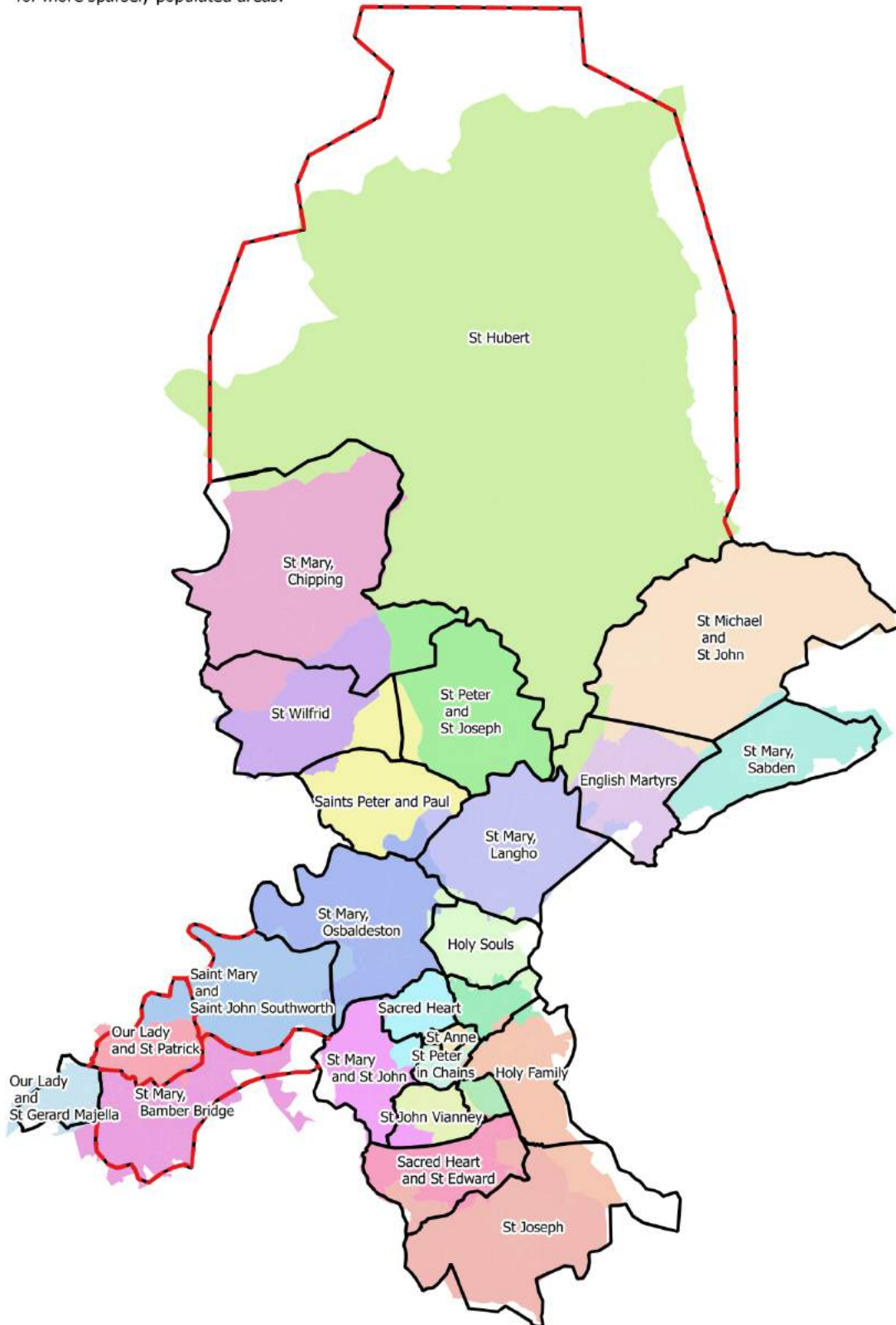
- Matched census areas covered 87 percent of the parish area.

Annex A: Maps

Output area coverage

--- Estimated boundaries

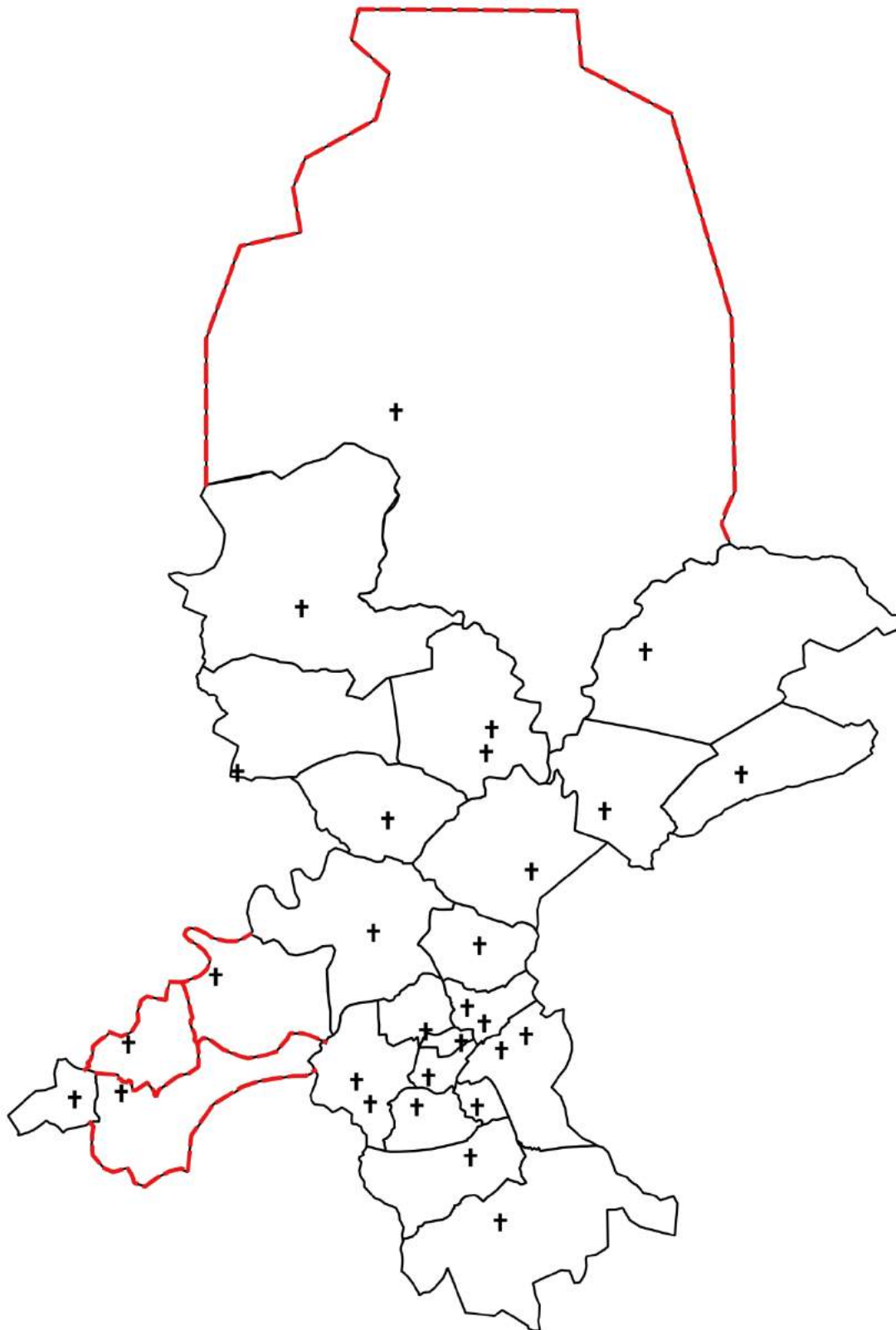
This map shows the output areas used for each parish to produce the estimates. The match is generally good, however there are few instances where it was not possible to align Output Area and parish boundaries - this is mainly the case for more sparsely populated areas.



Location of churches

— Estimated boundaries

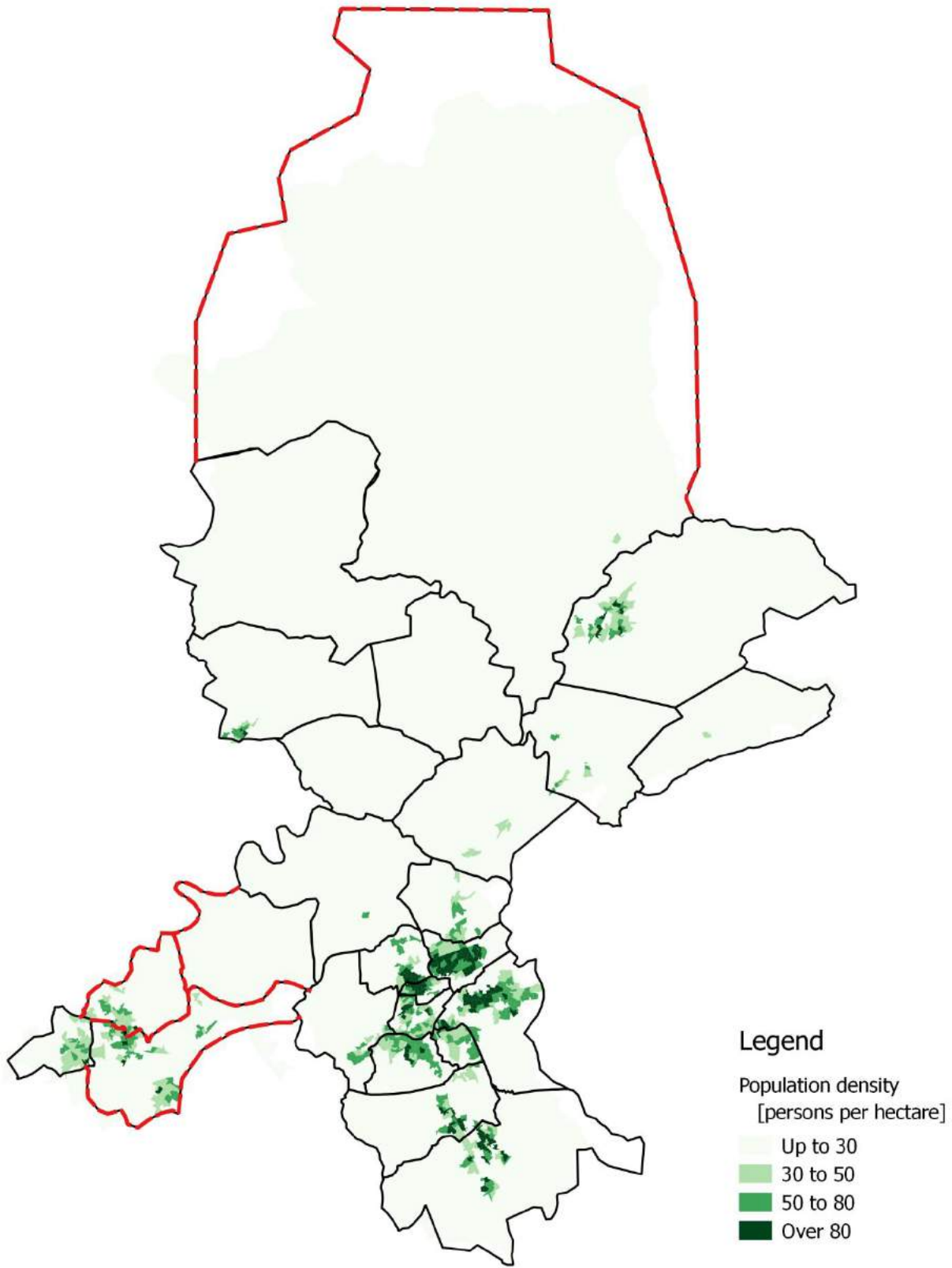
This map shows the location of churches in each parish in the deanery.



Population density

— Estimated boundaries

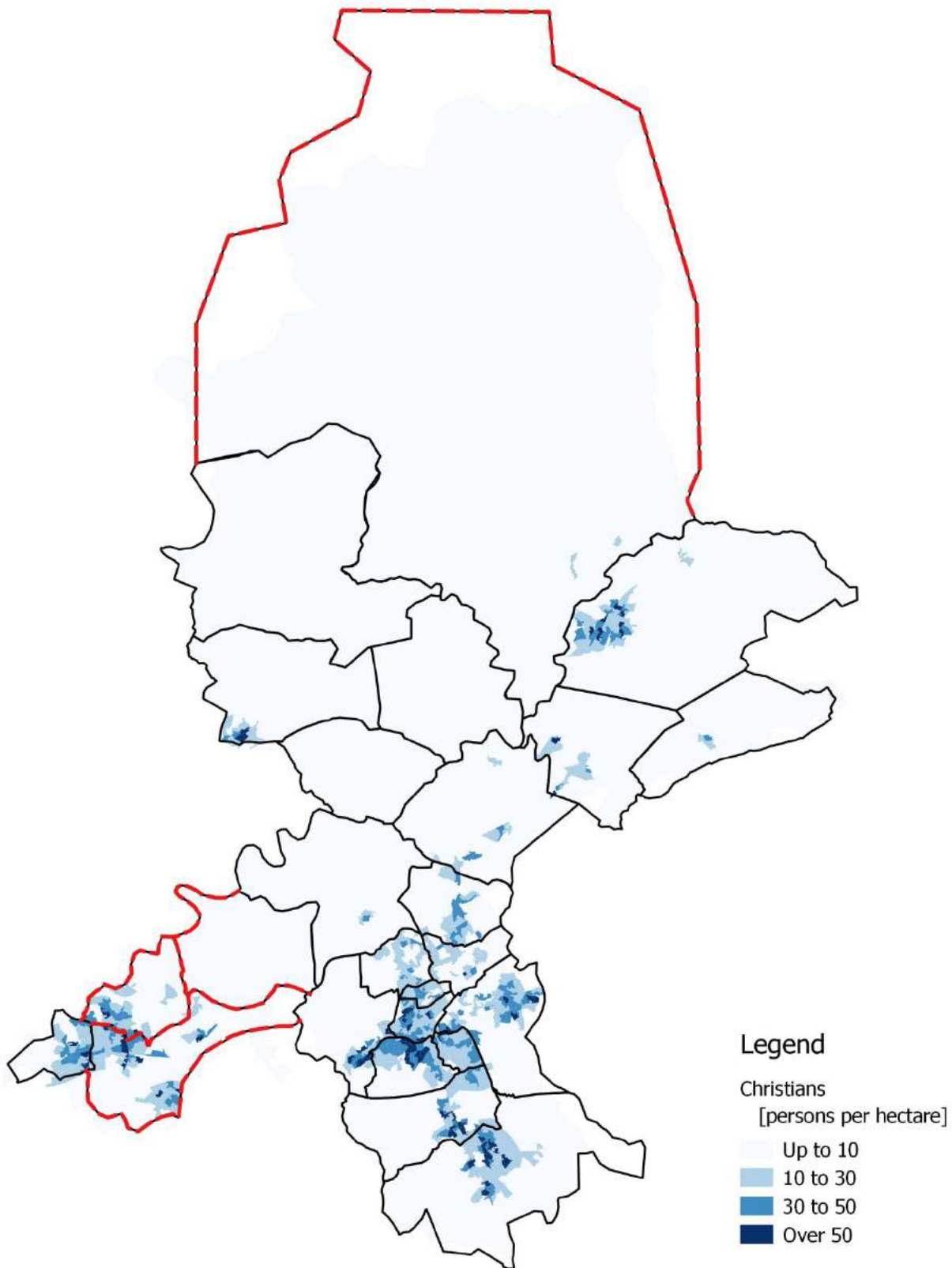
This map shows the population density, based on 2014 population estimate at the Output Area level. The density is expressed on number of persons per hectare.



Christian population

Estimated boundaries

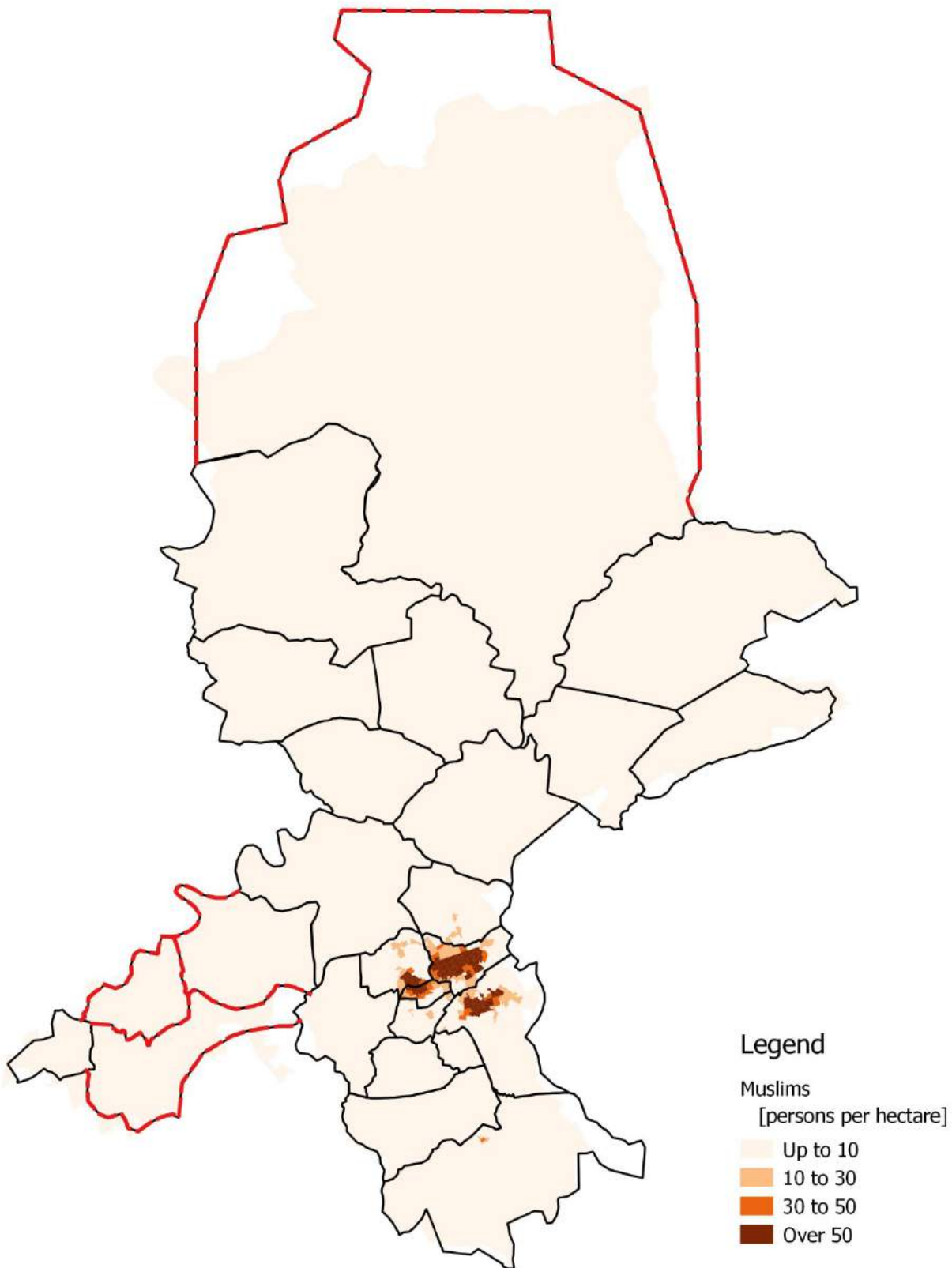
This map shows the Christian population density, based on 2011 Census estimates at the Output Area level. The density is expressed on number of persons per hectare.



Muslim population

Estimated boundaries

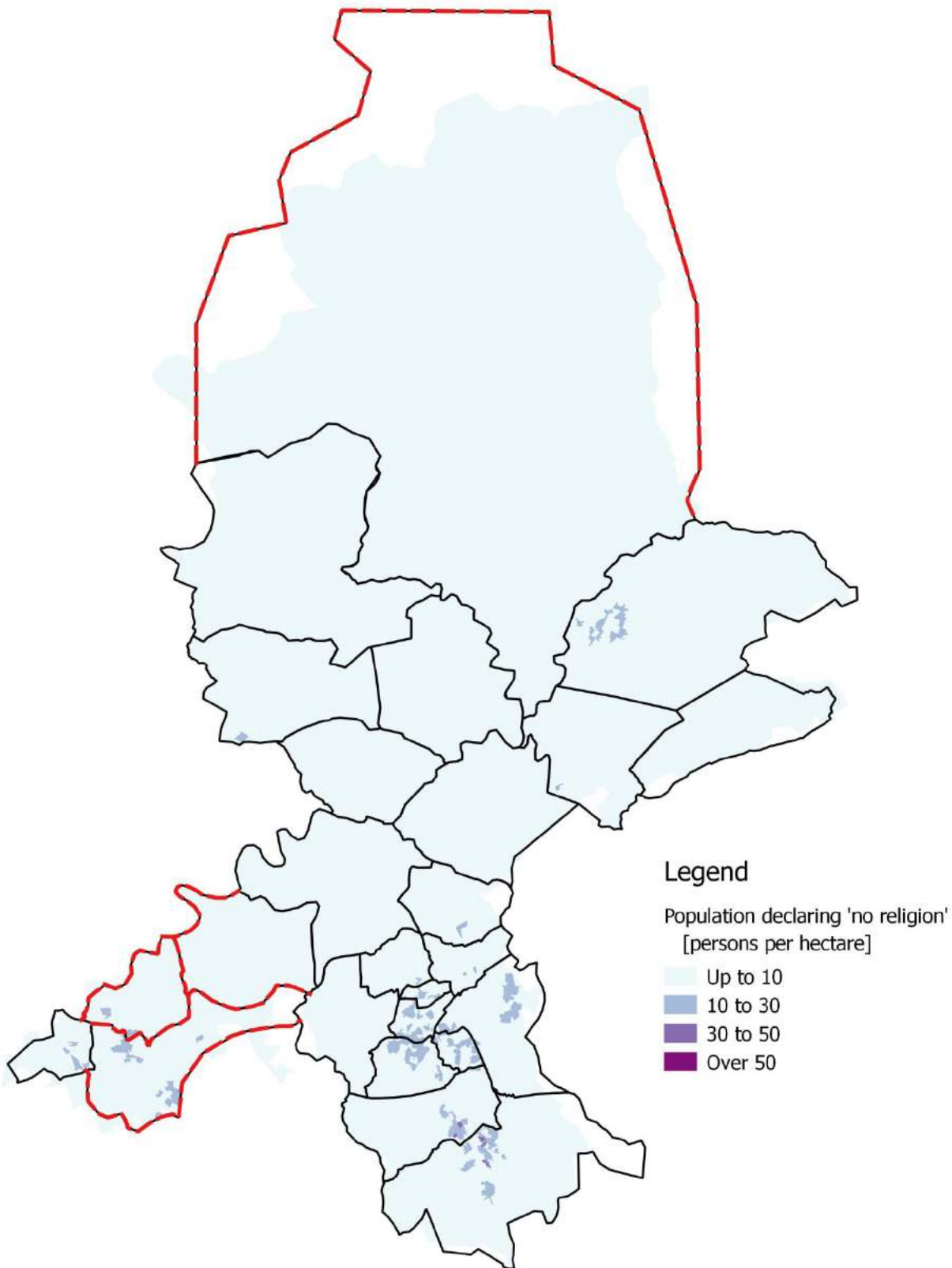
This map shows the Muslim population density, based on 2011 Census estimates at the Output Area level. The density is expressed on number of persons per hectare.



Population declaring 'no religion'

— Estimated boundaries

This map shows the density of the population declaring 'no religion', based on 2011 Census estimates at the Output Area level. The density is expressed on number of persons per hectare.



Annex B: Data limitations

Timeliness

The population size for each parish is based on mid-2014 estimates (30th June 2014). Remaining analysis is based on Census 2011 data and hence captures the population characteristics as they were on 27th March 2011. The socio-demographic characteristics of the population could have changed between then and the time of writing of this report. Some areas, for example where there is a lot of newly built houses or significant student or migrant population will be more dynamic, hence changes over time may be more significant.

Coverage

Good geographical coverage has been achieved when matching statistical areas to most parish areas, mainly because both statistical area boundaries and parish boundary tend not to cut across main roads. More sparsely populated areas were more difficult to match. Since extra areas included or removed are mainly industrial or sparsely populated, it is thought that population characteristics are not significantly affected. The reported overall population density for affected parishes is most likely an underestimate.

Data matching

A spatial join between parish areas and 'Population Weighted Centroids' was applied to determine Output Areas which fall within each parish boundary. This automated method assigned nearly 99 percent of all OAs in the deanery to parishes. A very small number (about 1 percent) was manually adjusted, to ensure good coverage and capture of the key population features.

Non- response

Like any survey, Census also faces issues with non-response. Due to ONS efforts, this is very low, at about 5% nationally.

Accuracy and correctness

The answers to Census questionnaire reflect respondents' perception and it is possible that some of the answers are incorrect, due to genuine mistakes or deception. Some of the respondents could also refuse to answer some of the questions. ONS has a methodology for checking responses for internal consistency and removes inconsistent or clearly incorrect entries. This in turn means that the base population for each characteristic may be slightly different.

Annex C: Data tables

Table 1: Number and selected characteristics of households, 2011

		Households					
Parish ID	Parish name	Total number	No access to car	Rented accommodation	One family	One person	Other
H001	English Martyrs	2,480	261	454	1,672	733	75
H002	Holy Family	10,278	4,097	4,847	6,116	3,269	893
H003	Holy Souls	4,145	778	796	2,582	1,364	199
H004	Our Lady and St Gerard Majella	4,402	641	771	3,020	1,163	219
H005	Our Lady and St Patrick	4,220	632	791	2,882	1,120	218
H006	Our Lady of Perpetual Succor	2,885	1,137	1,448	1,765	928	192
H007	St Hubert	1,729	132	461	1,207	466	56
H008	Sacred Heart	3,801	631	613	2,484	870	447
H009	Sacred Heart and St Edward	5,550	1,460	1,528	3,580	1,689	281
H010	Saint Mary and Saint John Southworth	472	28	57	342	101	29
H011	Ss Peter and Paul	747	71	135	511	192	44
H012	St Alban & Good Shepherd	7,328	2,344	2,436	4,578	1,788	962
H013	St Anne	2,568	1,318	1,451	1,232	1,082	254
H014	St Joseph	8,866	2,547	2,725	5,501	2,872	493
H015	St Mary and St John	2,541	315	261	1,853	612	76
H016	St Mary, Bamber Bridge	9,399	1,739	2,512	6,132	2,802	465
H017	St Mary, Chipping	484	30	89	364	98	22
H018	St Mary, Langho	2,469	141	221	1,830	549	90
H019	St Mary, Osbaldeston	1,368	112	194	941	377	50
H020	St Mary, Sabden	722	93	136	507	199	16
H021	St Michael and St John	7,267	1,498	2,103	4,533	2,440	294
H022	St Peter and St Joseph	387	31	123	261	108	18
H023	St Peter in Chains	3,893	1,693	1,824	2,125	1,478	290
H024	St Vincent de Paul	5,764	1,317	1,466	3,926	1,590	248
H025	St Wilfrid	1,906	364	487	1,182	629	95
TOTAL		95,671	23,410	27,929	61,126	28,519	6,026

Table 2: Selected characteristics of one family and one person households, 2011

Parish ID	Parish name	Of one family households					One person households	
		One family	Married individuals	Cohabiting individuals	Lone parents	With dependant children (<i>married, cohabiting or lone parents</i>)	All members over 65	Over 65
H001	English Martyrs	1,672	995	215	225	743	237	381
H002	Holy Family	6,116	3,268	874	1,514	3,441	460	1,014
H003	Holy Souls	2,582	1,356	330	426	1,018	470	622
H004	Our Lady and St Gerard Majella	3,020	1,791	506	440	1,353	283	454
H005	Our Lady and St Patrick	2,882	1,569	556	474	1,321	283	421
H006	Our Lady of Perpetual Succor	1,765	742	386	529	964	108	290
H007	St Hubert	1,207	764	138	84	389	221	248
H008	Sacred Heart	2,484	1,727	197	277	1,221	283	342
H009	Sacred Heart and St Edward	3,580	1,810	675	706	1,606	389	615
H010	Saint Mary and Saint John Southworth	342	202	41	31	114	68	50
H011	Ss Peter and Paul	511	319	58	55	192	79	85
H012	St Alban & Good Shepherd	4,578	3,273	268	752	2,777	285	675
H013	St Anne	1,232	722	146	298	764	66	324
H014	St Joseph	5,501	2,780	1,060	1,088	2,419	573	1,000
H015	St Mary and St John	1,853	1,038	211	251	650	353	368
H016	St Mary, Bamber Bridge	6,132	3,188	953	1,001	2,302	990	1,274
H017	St Mary, Chipping	364	231	29	46	123	58	51
H018	St Mary, Langho	1,830	1,149	171	156	738	354	269
H019	St Mary, Osbaldeston	941	573	80	105	331	183	217
H020	St Mary, Sabden	507	312	69	63	206	63	89
H021	St Michael and St John	4,533	2,401	718	714	1,876	700	1,110
H022	St Peter and St Joseph	261	168	25	24	107	44	50
H023	St Peter in Chains	2,125	838	493	624	1,130	170	477
H024	St Vincent de Paul	3,926	2,060	687	734	1,835	445	608
H025	St Wilfrid	1,182	635	209	169	464	169	313
TOTAL		61,126	33,911	9,095	10,786	28,084	7,334	11,347

Table 3: Population estimates, 2014 and 2011 and religion, 2011

Parish ID	Parish name	Population estimates				Religion			
		2014	2011	2011, residents over 16	2011, working age population	Christian	Muslim	No religion	Other and not stated
H001	English Martyrs	6,286	6,005	4,841	4,307	4,754	37	846	368
H002	Holy Family	27,296	27,487	20,290	19,026	11,673	10,500	3,547	1,767
H003	Holy Souls	9,251	9,383	7,746	6,632	6,713	907	1,183	580
H004	Our Lady and St Gerard Majella	10,551	10,647	8,556	7,922	8,062	53	1,803	729
H005	Our Lady and St Patrick	10,029	10,062	8,030	7,446	7,592	122	1,693	655
H006	Our Lady of Perpetual Succor	7,003	7,015	5,266	4,952	4,679	209	1,626	501
H007	St Hubert	4,066	4,016	3,353	3,001	3,204	14	530	268
H008	Sacred Heart	11,701	11,607	8,773	7,973	4,253	5,652	830	872
H009	Sacred Heart and St Edward	12,971	13,002	10,443	9,536	9,306	235	2,585	876
H010	Saint Mary and Saint John Southworth	1,191	1,206	1,013	913	981	9	140	76
H011	Ss Peter and Paul	1,816	1,836	1,493	1,348	1,444	-	268	124
H012	St Alban & Good Shepherd	24,406	24,020	17,217	16,162	4,135	17,612	877	1,396
H013	St Anne	6,572	6,592	4,895	4,575	2,204	3,293	632	463
H014	St Joseph	19,710	20,260	16,290	15,033	13,933	618	4,214	1,495
H015	St Mary and St John	5,838	5,984	5,032	4,420	5,044	50	596	294
H016	St Mary, Bamber Bridge	21,569	21,695	18,063	16,207	16,505	91	3,672	1,427
H017	St Mary, Chipping	1,275	1,212	1,010	924	1,011	-	135	66
H018	St Mary, Langho	6,268	6,234	5,024	4,563	5,017	70	724	423
H019	St Mary, Osbaldeston	3,202	3,140	2,623	2,295	2,602	38	300	200
H020	St Mary, Sabden	1,731	1,670	1,359	1,251	1,266	5	281	118
H021	St Michael and St John	16,683	16,430	13,406	11,744	12,083	226	2,967	1,154
H022	St Peter and St Joseph	1,259	1,307	977	894	1,036	3	168	100
H023	St Peter in Chains	8,569	8,790	6,763	6,251	5,852	562	1,761	615
H024	St Vincent de Paul	13,931	13,940	10,922	10,044	10,689	209	2,237	805
H025	St Wilfrid	4,450	4,300	3,552	3,145	3,443	-	582	275
TOTAL		237,624	237,840	186,937	170,564	147,481	40,515	34,197	15,647