

# **Deanery of Mount Carmel**

**Population analysis at the parish level**

*April 2016*

# Table of contents

<b>Introduction</b>	<b>3</b>
<b>Parishes</b>	
<i>Corpus Christi, Hollinwood</i>	4
<i>Holy Family &amp; Holy Rosary, Oldham</i>	5
<i>Sacred Heart &amp; Our Lady, Oldham</i>	6
<i>St Aidan &amp; St Oswald, Royton</i>	7
<i>St Anne &amp; St Michael, Oldham</i>	8
<i>St Christopher, Hurst Cross</i>	9
<i>St Edward, Lees</i>	10
<i>St Herbert, Chadderton</i>	11
<i>St Joseph, Mossley</i>	12
<i>St Joseph, Shaw</i>	13
<i>St Mary &amp; the Angels, Ashton-under-Lyne</i>	14
<i>St Mary &amp; St Patrick, Oldham</i>	15
<b>Annex A: Maps</b>	<b>16</b>
<b>Annex B: Data limitations</b>	<b>22</b>
<b>Annex C: Data tables</b>	<b>23</b>

# Introduction

## Purpose

The aim of this report is to give the reader an easy access to key census statistics for selected parishes and hence provide contextual information to help better understand communities served by each parish. The maps in the annex help to view the parish in the context of neighbouring areas.

## Report structure

This report presents **summary statistics for each parish** in the deanery of Mount Carmel, providing: population estimates, age profile, declared religion, occupation and family situation. The report is complemented by a series of six maps showing, output area coverage, location of church buildings, overall population density (2014) and population density by religion (2011). Maps are included in Annex A. The data limitations are discussed in Annex B and the tables showing data for selected characteristics are shown in Annex C. The parishes are presented in the alphabetical order.

## Coverage and boundary

Due to the statistical area and output area shapes, areas matched for four parishes<sup>1</sup> actually cover over 115 percent of the parish area. The additional, included area in all cases is a very sparsely populated industrial or green area and does not considerably affect presented statistics. Similarly, the parish area not covered in one parish<sup>2</sup> with coverage below 90 percent is not a residential area and hence it has negligible effect on the estimates.

Considerable stretches of St Christopher's, St Joseph's Mossley and St Edward's and a smaller part of St Joseph's, Shaw boundaries are estimated. This is marked on the maps in Annex A by red, dotted line. ***The relevant parts of this report can be revised if the description of these boundaries is provided.***

## Deanery level overview

Overall, the deanery, consisting of **12 parishes**, covers the area of just under 78 square kilometers (7.8k hectares). The 2014 **population size** was estimated at 247.2k, which is 2 percent higher than Census 2011 estimate. Majority of usual residents were **aged** between 36 and 64 (37%), followed by those aged 18 to 35. Only 12 percent of the population was aged under 7. Fifty-seven percent of the population declared their **religion** as Christian, followed by 18 percent declaring Muslim belief and 17 percent declaring 'no religion'.

The **number of households** in the deanery was estimated at 97.6k, of which a third did not have **access to a car** and thirty-seven percent rented their accommodation. Sixty-one per cent of all households were occupied by a family, and 31 percent were one person households, with 12 percent of all households being occupied by **a person over 65 living alone**. About 7 percent fell into other category.

It is also worth noting that the between 2001 and 2011, when the overall number of persons in the deanery rose by 2 percent, the Christian population decreased by 16 percent (164.1k to 138.5k). At the same time Muslim population increased by 69 percent, from 26.4k to 44.5k and population declaring 'no religion' grew by 87 percent, from 22.1k to 41.5k.

---

<sup>1</sup> Parishes with overestimated area: Corpus Christi, St Edward, St Joseph's Mossley and St Joseph's Shaw

<sup>2</sup> Parishes with underestimated area: St Christopher

# Corpus Christi, Hollinwood

*Parish Priest: Fr Dermot Heakin*

## Area & Population

- Corpus Christi parish covers the area of 552 hectares, and the average **population density** is 39 persons per hectare.
- The parish population size **is growing**. On 30<sup>th</sup> June 2014, the total number of usual residents was estimated at 25.4k. This is 4 percent (917 persons) higher than the Census 2011 estimate of 24.5k.
- Census 2011 estimates the total **number of households** in the parish at 9.63k.

## Demographics

- Most of the usual residents (34%) are **aged** between 36 and 64, followed by 26 percent aged between 18 and 35, with only 13 percent aged below 7.
- In the parish area, 53 percent of the population declared their **religion** as Christian. Muslims accounted for 24 percent of the population, and 16 percent of all residents declared 'no religion'. The Christian population **decreased in line with** the decrease observed between 2001 and 2011 at the deanery level.
- Most residents in the parish (44%) declared their marital status as: '**married**'.

## Economy

- Of the 2011 population 1 percent **arrived** in the UK in two years before the census, and 6 percent arrived between 2001 and 2011.
- Most of the people (56%) in the parish declare their main economic activity as '**in employment**', followed by 13 percent being a '**retired person**'. Retail industry gives employment to the largest proportion of economically active people in this area. Those in employment are mainly engaged in elementary occupation roles. Nearly a third of those in employment work less than 30 hours per week.

## Families

- Of all households in the parish, 60 percent are occupied by a single **family**, 32 percent are one person households (of which 13 percent are 'single, over 65') and 9 percent falls into 'other' category (mainly shared houses or households with lodgers).
- Of the 'one family' households, 49 percent consist of **married couples**, 18 percent are cohabiting and 24 percent are **lone parents**. A half of one family households have dependent children, and 9 percent are families with all members aged over 65.
- In the parish area, 38 percent of households rent their accommodation, and 36 percent **do not** have access to car.

## Data coverage & accuracy

- Matched census areas covered 119 percent of the parish area.

# Holy Family & Holy Rosary, Oldham

*Parish Priest: Fr Michael Fleming*

## Area & Population

- Holy Family & Holy Rosary's parish covers the area of 575 hectares, and the average **population density** is 33 persons per hectare.
- The parish population size **is growing**. On 30<sup>th</sup> June 2014, the total number of usual residents was estimated at 18.6k. This is 5 percent (945 persons) higher than the Census 2011 estimate of 17.6k.
- Census 2011 estimates the total **number of households** in the parish at 7.22k.

## Demographics

- Most of the usual residents (35%) are **aged** between 36 and 64, followed by 25 percent aged between 18 and 35, with only 12 percent aged over 65.
- In the parish area, 61 percent of the population declared their **religion** as Christian. Muslims accounted for 10 percent of the population, and 22 percent of all residents declared 'no religion'. The Christian population **decreased in line with** the decrease observed between 2001 and 2011 at the deanery level.
- Most residents in the parish (40%) declared their marital status as: '**single, never married**'.

## Economy

- Of the 2011 population 1 percent **arrived** in the UK in two years before the census, and 4 percent arrived between 2001 and 2011.
- Most of the people (53%) in the parish declare their main economic activity as '**in employment**', followed by 12 percent being a '**retired person**'. Retail industry gives employment to the largest proportion of economically active people in this area. Those in employment are mainly engaged in elementary occupation roles. Nearly a third of those in employment work less than 30 hours per week.

## Families

- Of all households in the parish, 63 percent are occupied by a single **family**, 30 percent are one person households (of which 12 percent are 'single, over 65') and 7.09 percent falls into 'other' category (mainly shared houses or households with lodgers).
- Of the 'one family' households, 40 percent consist of **married couples**, 19 percent are cohabiting and 33 percent are **lone parents**. Fifty-three percent of one family households have dependent children, and 8 percent are families with all members aged over 65.
- In the parish area, 52 percent of households rent their accommodation, and 43 percent **do not** have access to car.

## Data coverage & accuracy

- Matched census areas covered 98 percent of the parish area.

# Sacred Heart & Our Lady, Oldham

*Parish Priest: Fr Raymond McKee*

## Area & Population

- Sacred Heart & Our Lady's parish covers the area of 580 hectares, and the average **population density** is 27 persons per hectare.
- The parish population size **remains fairly stable**. On 30<sup>th</sup> June 2014, the total number of usual residents was estimated at 15.8k. This is 1 percent (230 persons) higher than the Census 2011 estimate of 15.6k.
- Census 2011 estimates the total **number of households** in the parish at 6.5k.

## Demographics

- Most of the usual residents (40%) are **aged** between 36 and 64, followed by 23 percent aged between 18 and 35, with only 12 percent aged below 7.
- In the parish area, 70 percent of the population declared their **religion** as Christian. Muslims accounted for only 1 percent of the population, and 23 percent of all residents declared 'no religion'. The Christian population **decreased in line with** the decrease observed between 2001 and 2011 at the deanery level.
- Most residents in the parish (40%) declared their marital status as: '**married**'.

## Economy

- Of the 2011 population 2 percent arrived in the UK between 2001 and 2011.
- Most of the people (63%) in the parish declare their main economic activity as '**in employment**', followed by 12 percent being a '**retired person**'. Retail industry gives employment to the largest proportion of economically active people in this area. Those in employment are mainly engaged in skilled occupation roles. Twenty-seven percent of those in employment work less than 30 hours per week.

## Families

- Of all households in the parish, 64 percent are occupied by a single **family**, 31 percent are one person households (of which 10 percent are 'single, over 65') and 5 percent falls into 'other' category (mainly shared houses or households with lodgers).
- Of the 'one family' households, 47 percent consist of **married couples**, 20 percent are cohabiting and 26 percent are **lone parents**. Fifty-four percent of one family households have dependent children, and 7 percent are families with all members aged over 65.
- In the parish area, 40 percent of households rent their accommodation, and 34 percent **do not** have access to car.

## Data coverage & accuracy

- Matched census areas covered 101 percent of the parish area.

# St Aidan & St Oswald, Royton

*Parish Priest: Fr Stephen J Doyle*

## Area & Population

- St Aidan & St Oswald's parish covers the area of 781 hectares, and the average **population density** is 25 persons per hectare.
- The parish population size **remains fairly stable**. On 30<sup>th</sup> June 2014, the total number of usual residents was estimated at 21k. This is 1 percent (133 persons) lower than the Census 2011 estimate of 21.1k.
- Census 2011 estimates the total **number of households** in the parish at 8.87k.

## Demographics

- Most of the usual residents (40%) are **aged** between 36 and 64, followed by 21 percent aged between 18 and 35, with only 9 percent aged below 7.
- In the parish area, 72 percent of the population declared their **religion** as Christian. Muslims accounted for 7 percent of the population, and 14 percent of all residents declared 'no religion'. The Christian population **decreased in line with** the decrease observed between 2001 and 2011 at the deanery level.
- Most residents in the parish (49%) declared their marital status as: '**married**'.

## Economy

- Of the 2011 only 2 percent arrived in the UK between 2001 and 2011.
- Most of the people (64%) in the parish declare their main economic activity as '**in employment**', followed by 16 percent being a '**retired person**'. Retail industry gives employment to the largest proportion of economically active people in this area. Those in employment are mainly engaged in professional occupation roles. Twenty-seven percent of those in employment work less than 30 hours per week.

## Families

- Of all households in the parish, 65 percent are occupied by a single **family**, 28.6 percent are one person households (of which 14 percent are 'single, over 65') and 6 percent falls into 'other' category (mainly shared houses or households with lodgers).
- Of the 'one family' households, 55 percent consist of **married couples**, 16 percent are cohabiting and 16 percent are **lone parents**. Forty-two percent of one family households have dependent children, and 13 percent are families with all members aged over 65.
- In the parish area, 25 percent of households rent their accommodation, and 26 percent **do not** have access to car.

## Data coverage & accuracy

- Matched census areas covered 110 percent of the parish area.

# St Anne & St Michael, Oldham

*Parish Priest: Fr Derek Woodhead*

## Area & Population

- St Anne & St Michael's parish covers the area of 438 hectares, and the average **population density** is 55 persons per hectare.
- The parish population size **is growing**. On 30<sup>th</sup> June 2014, the total number of usual residents was estimated at 21.6k. This is 3 percent (688 persons) higher than the Census 2011 estimate of 20.9k.
- Census 2011 estimates the total **number of households** in the parish at 6.8k.

## Demographics

- Most of the usual residents (28.6%) are **aged** between 18 and 35, followed by 28.6 percent aged between 36 and 64, with only 9 percent aged over 65.
- In the parish area, 31 percent of the population declared their **religion** as Christian. Muslims accounted for 53 percent of the population, and 10 percent of all residents declared 'no religion'. The Christian population **decreased in line with** the decrease observed between 2001 and 2011 at the deanery level.
- Most residents in the parish (49%) declared their marital status as: '**married**'.

## Economy

- Of the 2011 population 2 percent **arrived** in the UK in two years before the census, and 11 percent arrived between 2001 and 2011.
- Most of the people (46%) in the parish declare their main economic activity as '**in employment**', followed by 13 percent mainly '**looking after family**'. Retail industry gives employment to the largest proportion of economically active people in this area. Those in employment are mainly engaged in elementary occupation roles. Nearly 40 percent of those in employment work less than 30 hours per week.

## Families

- Of all households in the parish, 59 percent are occupied by a single **family**, 28.4 percent are one person households (of which 10 percent are 'single, over 65') and 13 percent falls into 'other' category (mainly shared houses or households with lodgers).
- Of the 'one family' households, 56 percent consist of **married couples**, 12 percent are cohabiting and 25 percent are **lone parents**. Sixty-two percent of one family households have dependent children, and 6 percent are families with all members aged over 65.
- In the parish area, 42 percent of households rent their accommodation, and 40 percent **do not** have access to car.

## Data coverage & accuracy

- Matched census areas covered 90 percent of the parish area.



# St Christopher, Hurst Cross

*Parish Priest: Fr Simon Firth*

## Area & Population

- St Christopher's parish covers the area of 857 hectares, and the average **population density** is 35 persons per hectare.
- The parish population size **remains fairly stable**. On 30<sup>th</sup> June 2014, the total number of usual residents was estimated at 24k. This is 1 percent (167 persons) higher than the Census 2011 estimate of 23.8k.
- Census 2011 estimates the total **number of households** in the parish at 10k.

## Demographics

- Most of the usual residents (38%) are **aged** between 36 and 64, followed by 23 percent aged between 18 and 35, with only 11 percent aged below 7.
- In the parish area, 61 percent of the population declared their **religion** as Christian. Muslims accounted for 4 percent of the population, and 24 percent of all residents declared 'no religion'. The Christian population **decreased in line with** the decrease observed between 2001 and 2011 at the deanery level.
- Most residents in the parish (43%) declared their marital status as: '**married**'.

## Economy

- Of the 2011 population 1 percent **arrived** in the UK in two years before the census, and 4 percent arrived between 2001 and 2011.
- Most of the people (56.7%) in the parish declare their main economic activity as '**in employment**', followed by 15 percent being a '**retired person**'. Retail industry gives employment to the largest proportion of economically active people in this area. Those in employment are mainly engaged in elementary occupation roles. Twenty-eight percent of those in employment work less than 30 hours per week.

## Families

- Of all households in the parish, 62 percent are occupied by a single **family**, 31 percent are one person households (of which 12 percent are 'single, over 65') and 6 percent falls into 'other' category (mainly shared houses or households with lodgers).
- Of the 'one family' households, 48 percent consist of **married couples**, 18 percent are cohabiting and 24 percent are **lone parents**. Forty-seven percent of one family households have dependent children, and 10 percent are families with all members aged over 65.
- In the parish area, 41 percent of households rent their accommodation, and 34 percent **do not** have access to car.

## Data coverage & accuracy

- Matched census areas covered 81 percent of the parish area.

# St Edward, Lees

*Parish Priest: Canon Eugene Dolan*

## Area & Population

- St Edward's parish covers the area of 476 hectares, and the average **population density** is 27 persons per hectare.
- The parish population size **remains fairly stable**. On 30<sup>th</sup> June 2014, the total number of usual residents was estimated at 14.7k. This is 0 percent (30 persons) higher than the Census 2011 estimate of 14.7k.
- Census 2011 estimates the total **number of households** in the parish at 6.22k.

## Demographics

- Most of the usual residents (41%) are **aged** between 36 and 64, followed by 22 percent aged between 18 and 35, with only 9 percent aged below 7.
- In the parish area, 70 percent of the population declared their **religion** as Christian. Muslims accounted for 5 percent of the population, and 18 percent of all residents declared 'no religion'. The Christian population **decreased in line with** the decrease observed between 2001 and 2011 at the deanery level.
- Most residents in the parish (46%) declared their marital status as: '**married**'.

## Economy

- Of the 2011 population only 2 percent arrived in the UK between 2001 and 2011.
- Most of the people (65%) in the parish declare their main economic activity as '**in employment**', followed by 16 percent being a '**retired person**'. Retail industry gives employment to the largest proportion of economically active people in this area. Those in employment are mainly engaged in professional occupation roles. Just over a quarter of those in employment work less than 30 hours per week.

## Families

- Of all households in the parish, 65 percent are occupied by a single **family**, 30 percent are one person households (of which 13 percent are 'single, over 65') and 5 percent falls into 'other' category (mainly shared houses or households with lodgers).
- Of the 'one family' households, 51 percent consist of **married couples**, 20 percent are cohabiting and 17 percent are **lone parents**. Forty-two percent of one family households have dependent children, and 12 percent are families with all members aged over 65.
- In the parish area, 22 percent of households rent their accommodation, and 21 percent **do not** have access to car.

## Data coverage & accuracy

- Matched census areas covered 115 percent of the parish area.

# St Herbert, Chadderton

*Parish Priest: Fr Peter McKie*

## Area & Population

- St Herbert's parish covers the area of 506 hectares, and the average **population density** is 36 persons per hectare.
- The parish population size **remains fairly stable**. On 30<sup>th</sup> June 2014, the total number of usual residents was estimated at 20.3k. This is 1 percent (276 persons) higher than the Census 2011 estimate of 20.1k.
- Census 2011 estimates the total **number of households** in the parish at 7.44k.

## Demographics

- Most of the usual residents (36%) are **aged** between 36 and 64, followed by 22 percent aged between 18 and 35, with only 12 percent aged below 7.
- In the parish area, 55 percent of the population declared their **religion** as Christian. Muslims accounted for 27 percent of the population, and 12 percent of all residents declared 'no religion'. The Christian population **decreased in line with** the decrease observed between 2001 and 2011 at the deanery level.
- Most residents in the parish (52%) declared their marital status as: '**married**'.

## Economy

- Of the 2011 population only 1 percent **arrived** in the UK in two years before the census, and 4 percent arrived between 2001 and 2011.
- Most of the people (57%) in the parish declare their main economic activity as '**in employment**', followed by 14 percent being a '**retired person**'. Retail industry gives employment to the largest proportion of economically active people in this area. Those in employment are mainly engaged in skilled occupation roles. A third of those in employment work less than 30 hours per week.

## Families

- Of all households in the parish, 66 percent are occupied by a single **family**, 26 percent are one person households (of which 13 percent are 'single, over 65') and 8 percent falls into 'other' category (mainly shared houses or households with lodgers).
- Of the 'one family' households, 60 percent consist of **married couples**, 13 percent are cohabiting and 16 percent are **lone parents**. Forty-eight percent of one family households have dependent children, and 11 percent are families with all members aged over 65.
- In the parish area, 26 percent of households rent their accommodation, and 27 percent **do not** have access to car.

## Data coverage & accuracy

- Matched census areas covered 111 percent of the parish area.

# St Joseph, Mossley

*Parish Priest: Fr Michael Lavin*

## Area & Population

- St Joseph's parish covers the area of 900 hectares, and the average **population density** is 10 persons per hectare.
- The parish population size **remains fairly stable**. On 30<sup>th</sup> June 2014, the total number of usual residents was estimated at 11.1k. This is 1 percent (147 persons) higher than the Census 2011 estimate of 11k.
- Census 2011 estimates the total **number of households** in the parish at 4.94k.

## Demographics

- Most of the usual residents (42%) are **aged** between 36 and 64, followed by 21 percent aged between 18 and 35, with only 11 percent aged below 7.
- In the parish area, 66 percent of the population declared their **religion** as Christian. Muslims accounted for 2 percent of the population, and 25 percent of all residents declared 'no religion'. The Christian population **decreased in line with** the decrease observed between 2001 and 2011 at the deanery level.
- Most residents in the parish (43%) declared their marital status as: '**married**'.

## Economy

- Of the 2011 population 0 percent **arrived** in the UK in two years before the census, and 2 percent arrived between 2001 and 2011.
- Most of the people (64%) in the parish declare their main economic activity as '**in employment**', followed by 14 percent being a '**retired person**'. Retail industry gives employment to the largest proportion of economically active people in this area. Those in employment are mainly engaged in professional occupation roles. A quarter of those in employment work less than 30 hours per week.

## Families

- Of all households in the parish, 61 percent are occupied by a single **family**, 34 percent are one person households (of which 12 percent are 'single, over 65') and 5 percent falls into 'other' category (mainly shared houses or households with lodgers).
- Of the 'one family' households, 51 percent consist of **married couples**, 20 percent are cohabiting and 19 percent are **lone parents**. Forty-four percent of one family households have dependent children, and 10 percent are families with all members aged over 65.
- In the parish area, 35 percent of households rent their accommodation, and 27 percent **do not** have access to car.

## Data coverage & accuracy

- Matched census areas covered 129 percent of the parish area.

# St Joseph, Shaw

*Parish Priest: Fr John B Scanlan*

## Area & Population

- St Joseph's parish covers the area of 902 hectares, and the average **population density** is 18 persons per hectare.
- The parish population size **remains fairly stable**. On 30<sup>th</sup> June 2014, the total number of usual residents was estimated at 23.3k. This is 1 percent (320 persons) lower than the Census 2011 estimate of 23.6k.
- Census 2011 estimates the total **number of households** in the parish at 10k.

## Demographics

- Most of the usual residents (41%) are **aged** between 36 and 64, followed by 21 percent aged between 18 and 35, with only 9 percent aged below 7.
- In the parish area, 75 percent of the population declared their **religion** as Christian. Muslims accounted for 2 percent of the population, and 17 percent of all residents declared 'no religion'. The Christian population **decreased in line with** the decrease observed between 2001 and 2011 at the deanery level.
- Most residents in the parish (48%) declared their marital status as: '**married**'.

## Economy

- Of the 2011 population only 1 percent arrived in the UK between 2001 and 2011.
- Most of the people (63%) in the parish declare their main economic activity as '**in employment**', followed by 18 percent being a '**retired person**'. Retail industry gives employment to the largest proportion of economically active people in this area. Those in employment are mainly engaged in professional occupation roles. A quarter of those in employment work less than 30 hours per week.

## Families

- Of all households in the parish, 65 percent are occupied by a single **family**, 30 percent are one person households (of which 14 percent are 'single, over 65') and 5 percent falls into 'other' category (mainly shared houses or households with lodgers).
- Of the 'one family' households, 52 percent consist of **married couples**, 17 percent are cohabiting and 17 percent are **lone parents**. Forty percent of one family households have dependent children, and 14.2 percent are families with all members aged over 65.
- In the parish area, 24 percent of households rent their accommodation, and 23 percent **do not** have access to car.

## Data coverage & accuracy

- Matched census areas covered 145 percent of the parish area.

# St Mary & the Angels, Ashton-under-Lyne

*Parish Priest: Fr Simon Firth*

## Area & Population

- St Mary & the Angels's parish covers the area of 779 hectares, and the average **population density** is 36 persons per hectare.
- The parish population size **is growing**. On 30<sup>th</sup> June 2014, the total number of usual residents was estimated at 29.6k. This is 2 percent (637 persons) higher than the Census 2011 estimate of 28.9k.
- Census 2011 estimates the total **number of households** in the parish at 12.6k.

## Demographics

- Most of the usual residents (38%) are **aged** between 36 and 64, followed by 25 percent aged between 18 and 35, with only 11 percent aged below 7.
- In the parish area, 55 percent of the population declared their **religion** as Christian. Muslims accounted for 13 percent of the population, and 20 percent of all residents declared 'no religion'. The Christian population **decreased in line with** the decrease observed between 2001 and 2011 at the deanery level.
- Most residents in the parish (41%) declared their marital status as: '**married**'.

## Economy

- Of the 2011 population 1 percent **arrived** in the UK in two years before the census, and 8 percent arrived between 2001 and 2011.
- Most of the people (57%) in the parish declare their main economic activity as '**in employment**', followed by 13 percent being a '**retired person**'. Retail industry gives employment to the largest proportion of economically active people in this area. Those in employment are mainly engaged in elementary occupation roles. Twenty-seven percent of those in employment work less than 30 hours per week.

## Families

- Of all households in the parish, 56 percent are occupied by a single **family**, 37 percent are one person households (of which 12 percent are 'single, over 65') and 7 percent falls into 'other' category (mainly shared houses or households with lodgers).
- Of the 'one family' households, 50 percent consist of **married couples**, 19 percent are cohabiting and 22 percent are **lone parents**. Forty-eight percent of one family households have dependent children, and 9 percent are families with all members aged over 65.
- In the parish area, 46 percent of households rent their accommodation, and 39 percent **do not** have access to car.

## Data coverage & accuracy

- Matched census areas covered 105 percent of the parish area.

# St Mary & St Patrick, Oldham

*Parish Priest: Fr Philip T Sumner*

## Area & Population

- St Mary & St Patrick's parish covers the area of 422 hectares, and the average **population density** is 53 persons per hectare.
- The parish population size **is growing**. On 30<sup>th</sup> June 2014, the total number of usual residents was estimated at 21.8k. This is 4 percent (754 persons) higher than the Census 2011 estimate of 21k.
- Census 2011 estimates the total **number of households** in the parish at 7.06k.

## Demographics

- Most of the usual residents (30%) are **aged** between 18 and 35, followed by 28.4 percent aged between 36 and 64, with only 9 percent aged over 65.
- In the parish area, 26 percent of the population declared their **religion** as Christian. Muslims accounted for 59 percent of the population, and 8 percent of all residents declared 'no religion'. The Christian population **decreased in line with** the decrease observed between 2001 and 2011 at the deanery level.
- Most residents in the parish (45%) declared their marital status as: '**married**'.

## Economy

- Of the 2011 population 3 percent **arrived** in the UK in two years before the census, and 14.2 percent arrived between 2001 and 2011.
- Most of the people (41%) in the parish declare their main economic activity as '**in employment**', followed by 13 percent being a '**student**'. Retail industry gives employment to the largest proportion of economically active people in this area. Those in employment are mainly engaged in elementary occupation roles. Forty-three percent of those in employment work less than 30 hours per week.

## Families

- Of all households in the parish, 51 percent are occupied by a single **family**, 35 percent are one person households (of which 12 percent are 'single, over 65') and 14.2 percent falls into 'other' category (mainly shared houses or households with lodgers).
- Of the 'one family' households, 56 percent consist of **married couples**, 10 percent are cohabiting and 27 percent are **lone parents**. Sixty-four percent of one family households have dependent children, and 5 percent are families with all members aged over 65.
- In the parish area, 56.3 percent of households rent their accommodation, and 54 percent **do not** have access to car.

## Data coverage & accuracy

- Matched census areas covered 97 percent of the parish area.

# Annex A: Maps

## Output area coverage

This map shows the output areas used for each parish to produce the estimates. The match is generally good, however there are few instances where it was not possible to align Output Area and parish boundaries - this is mainly the case for more sparsely populated areas.

--- Estimated boundaries

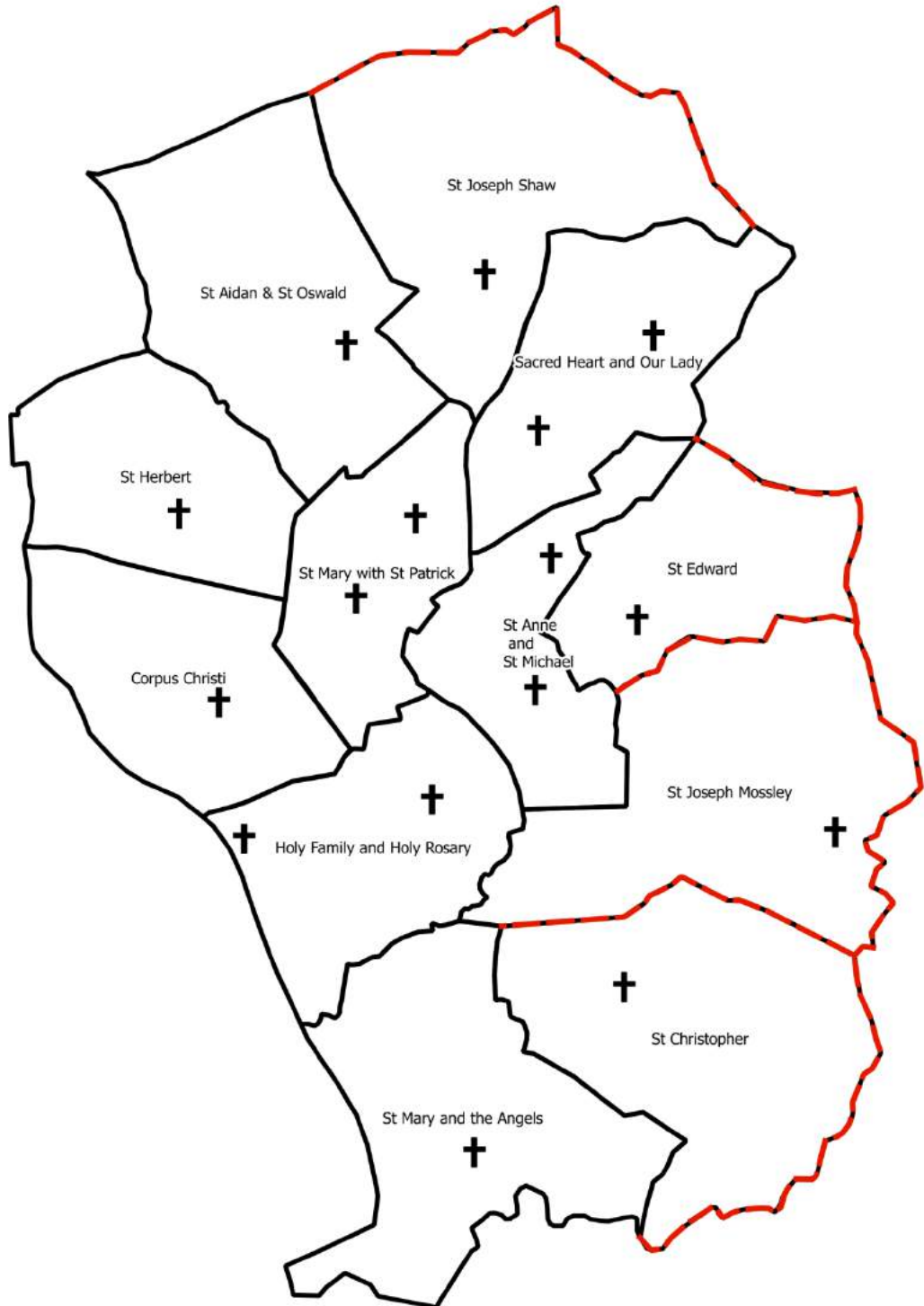




## Location of churches

--- Estimated boundaries

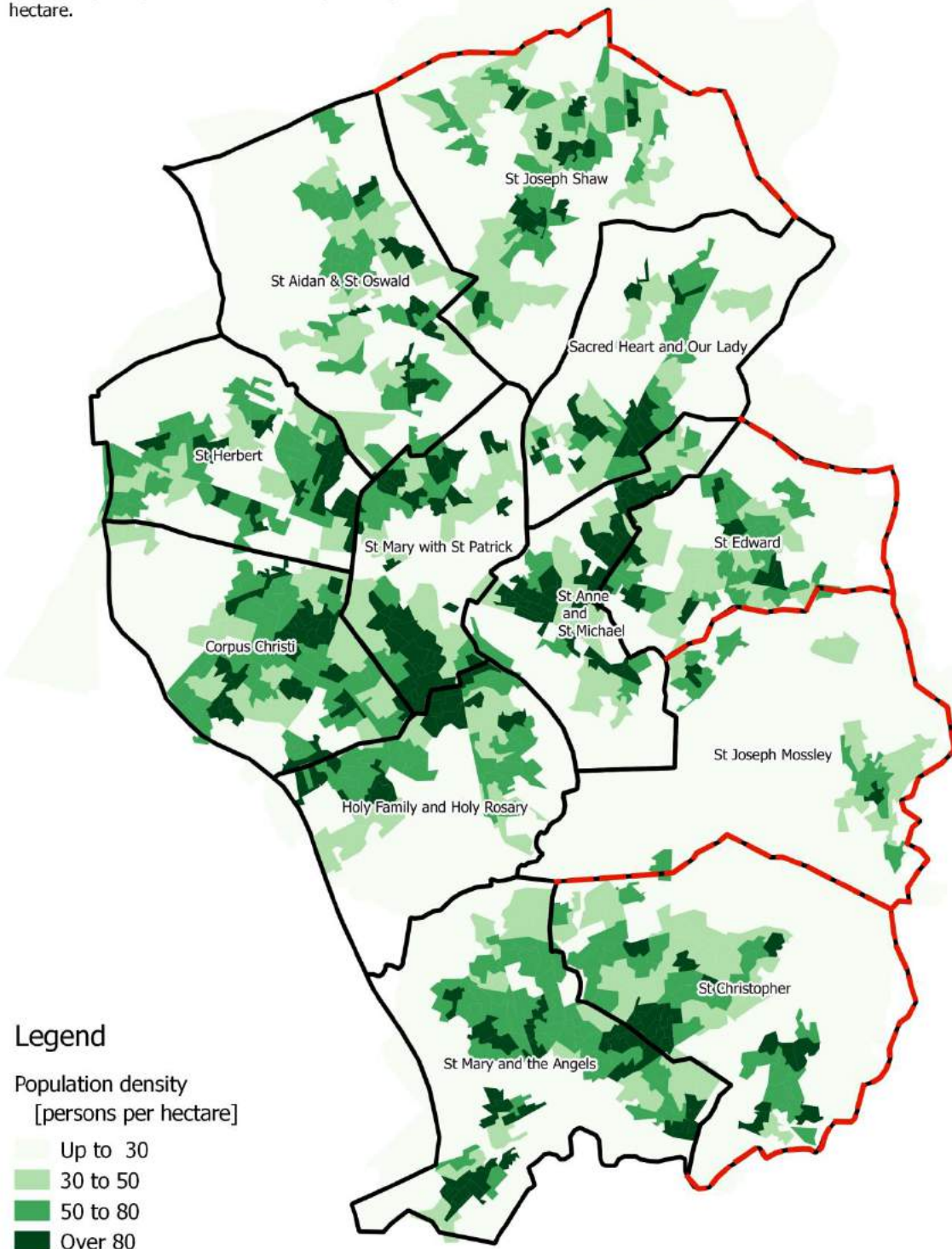
This map shows the location of churches in each parish in the deanery.



## Population density

--- Estimated boundaries

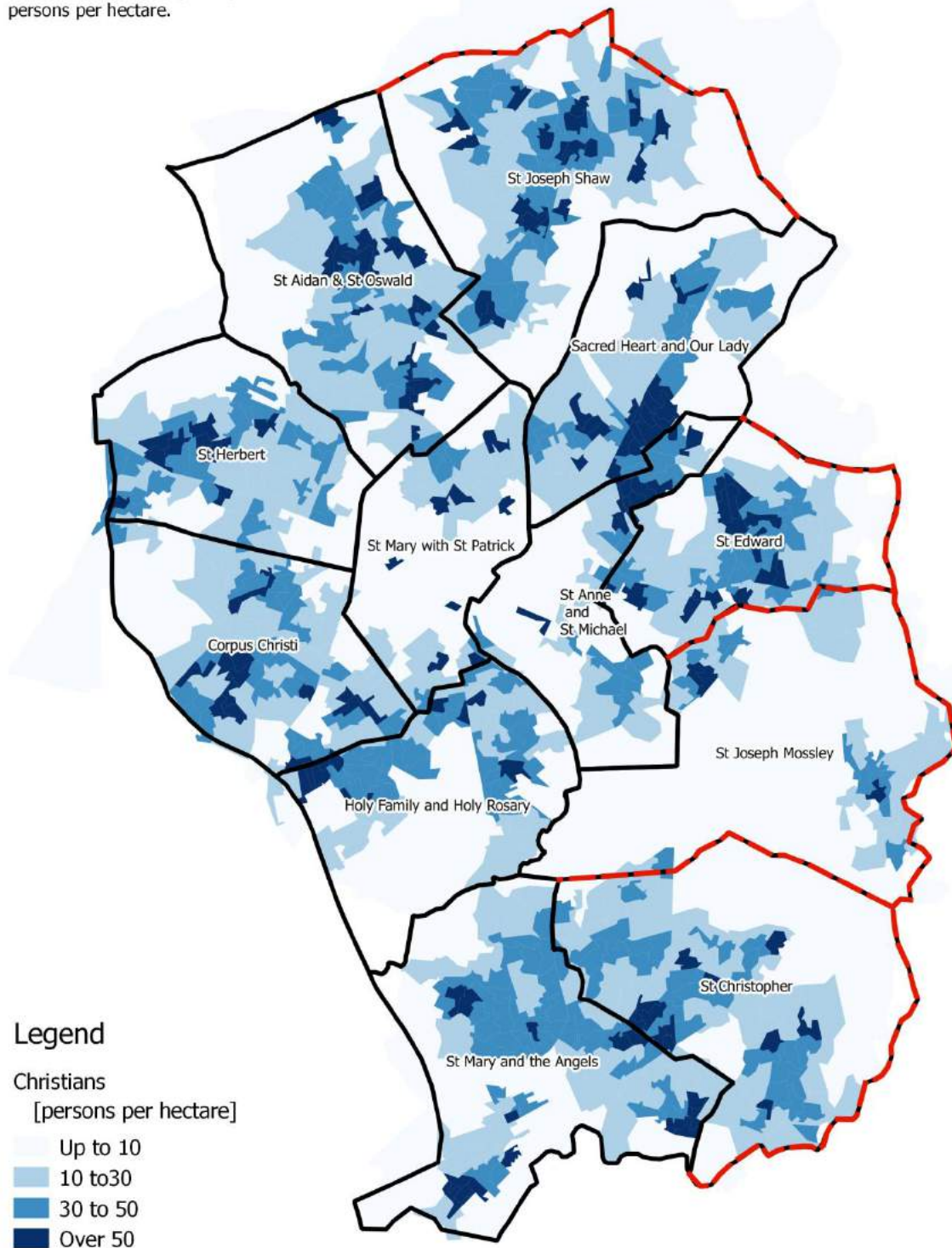
This map shows the population density, based on 2014 population estimate at the Output Area level. The density is expressed on number of persons per hectare.



# Christian population

--- Estimated boundaries

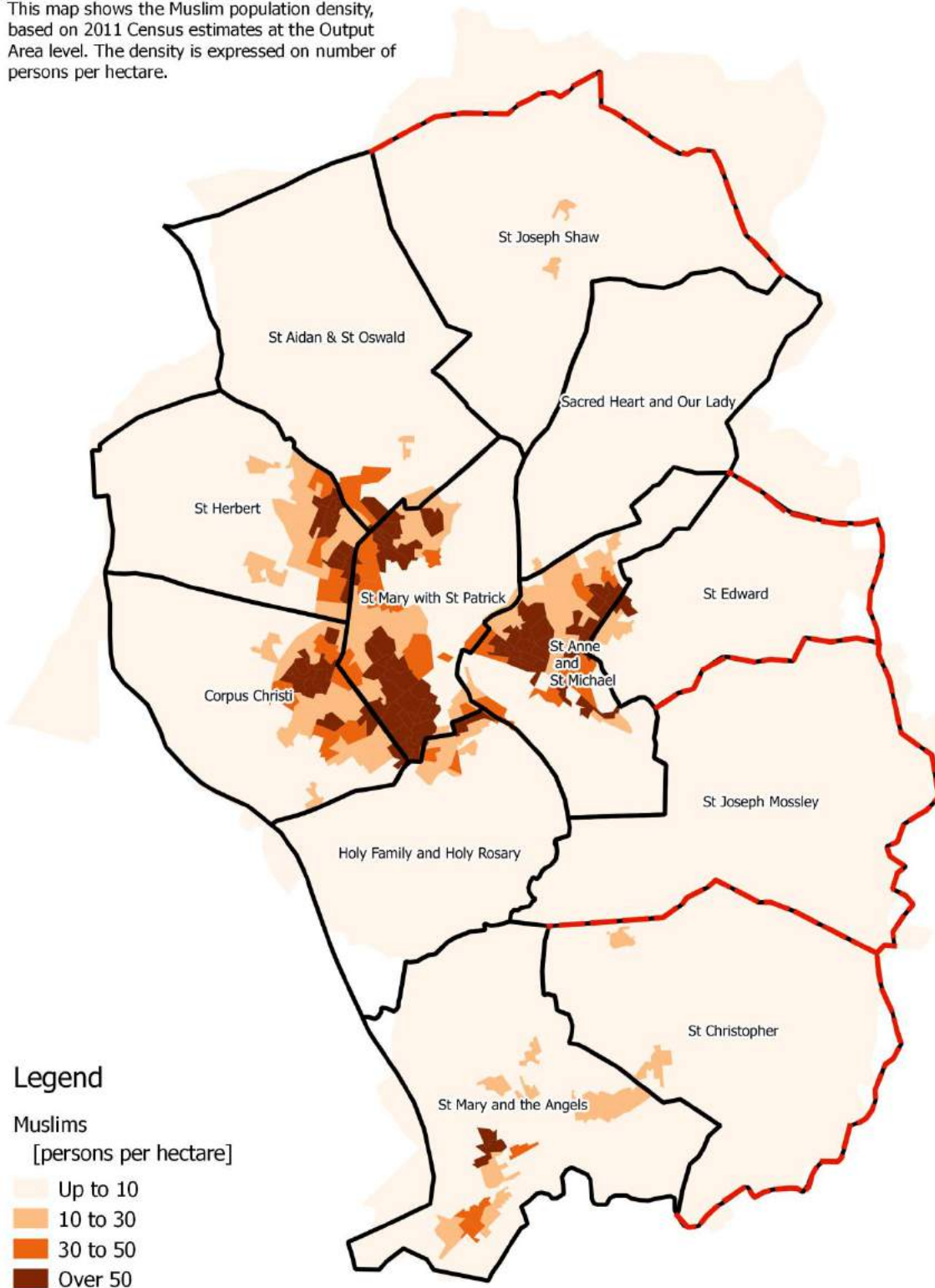
This map shows the Christian population density, based on 2011 Census estimates at the Output Area level. The density is expressed on number of persons per hectare.



# Muslim population

--- Estimated boundaries

This map shows the Muslim population density, based on 2011 Census estimates at the Output Area level. The density is expressed on number of persons per hectare.



## Legend

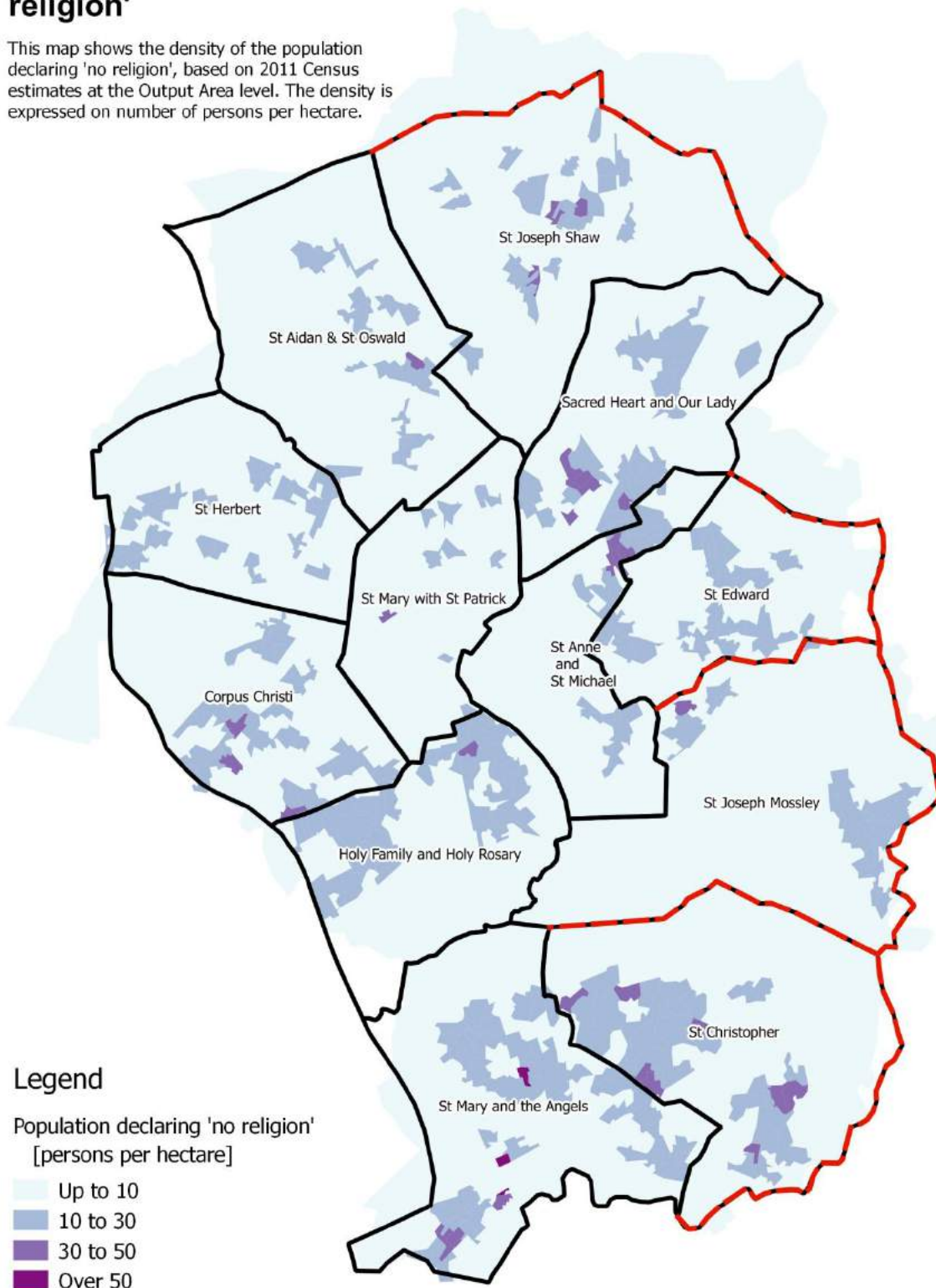
Muslims  
[persons per hectare]

- Up to 10
- 10 to 30
- 30 to 50
- Over 50

## Population declaring 'no religion'

--- Estimated boundaries

This map shows the density of the population declaring 'no religion', based on 2011 Census estimates at the Output Area level. The density is expressed on number of persons per hectare.



## **Annex B: Data limitations**

### **Timeliness**

The population size for each parish is based on mid-2014 estimates (30<sup>th</sup> June 2014). Remaining analysis is based on Census 2011 data and hence captures the population characteristics as they were on 27<sup>th</sup> March 2011. The socio-demographic characteristics of the population could have changed between then and the time of writing of this report. Some areas, for example where there is a lot of newly built houses or significant student or migrant population will be more dynamic, hence changes over time may be more significant.

### **Coverage**

Good geographical coverage has been achieved when matching statistical areas to most parish areas, mainly because both statistical area boundaries and parish boundary tend not to cut across main roads. More sparsely populated areas in Trafford were more difficult to match. Since extra area included or removed is mainly industrial, it is thought that population characteristics are not significantly affected. The reported overall population density for affected parishes is most likely an underestimate.

### **Data matching**

A spatial join between parish areas and 'Population Weighted Centroids' was applied to determine Output Areas which fall within each parish boundary. This automated method assigned nearly 99 percent of all OAs in the deanery to parishes. A very small number (about 1 percent) was manually adjusted, to ensure good coverage and capture of the key population features.

### **Non- response**

Like any survey, Census also faces issues with non-response. Due to ONS efforts, this is very low, at about 5% nationally.

### **Accuracy and correctness**

The answers to Census questionnaire reflect respondents' perception and it is possible that some of the answers are incorrect, due to genuine mistakes or deception. Some of the respondents could also refuse to answer some of the questions. ONS has a methodology for checking responses for internal consistency and removes inconsistent or clearly incorrect entries. This in turn means that the base population for each characteristic may be slightly different.

## Annex C: Data tables

**Table 1: Number and selected characteristics of households, 2011**

		Households					
Parish ID	Parish name	Total number	No access to car	Rented accommodation	One family	One person	Other
E001	Corpus Christi	9,701	3,471	3,683	5,788	3,078	835
E002	Holy Family and Holy Rosary	7,206	3,066	3,737	4,535	2,163	508
E003	Sacred Heart and Our Lady	6,518	2,224	2,601	4,172	2,049	297
E004	St Aidan & St Oswald	8,795	2,278	2,186	5,724	2,561	510
E005	St Anne and St Michael	6,816	2,750	2,864	4,036	1,889	891
E006	St Christopher	10,024	3,428	4,156	6,263	3,130	631
E007	St Edward	6,230	1,335	1,356	4,044	1,845	341
E008	St Herbert	7,373	1,987	1,907	4,850	1,951	572
E009	St Joseph Mossley	4,885	1,336	1,695	2,977	1,663	245
E010	St Joseph Shaw	10,317	2,421	2,510	6,742	3,053	522
E011	St Mary and the Angels	12,636	4,989	5,772	7,116	4,696	824
E012	St Mary with St Patrick	7,053	3,792	4,048	3,573	2,473	1,007
<b>TOTAL</b>		<b>97,554</b>	<b>33,077</b>	<b>36,515</b>	<b>59,820</b>	<b>30,551</b>	<b>7,183</b>

**Table 2: Selected characteristics of one family and one person households, 2011**

		Of one family households					One person households	
Parish ID	Parish name	One family	Married individuals	Cohabiting individuals	Lone parents	With dependant children ( <i>married, cohabiting or lone parents</i> )	All members over 65	Over 65
E001	Corpus Christi	5,788	2,846	1,022	1,386	2,918	534	1,280
E002	Holy Family and Holy Rosary	4,535	1,823	851	1,493	2,417	368	846
E003	Sacred Heart and Our Lady	4,172	1,953	838	1,082	2,251	299	651
E004	St Aidan & St Oswald	5,724	3,134	890	943	2,403	757	1,249
E005	St Anne and St Michael	4,036	2,282	496	1,025	2,521	233	672
E006	St Christopher	6,263	3,010	1,124	1,477	2,963	652	1,244
E007	St Edward	4,044	2,060	821	686	1,680	477	827
E008	St Herbert	4,850	2,894	629	787	2,308	540	935
E009	St Joseph Mossley	2,977	1,509	602	579	1,324	287	589
E010	St Joseph Shaw	6,742	3,498	1,128	1,176	2,714	940	1,397
E011	St Mary and the Angels	7,116	3,531	1,335	1,588	3,393	662	1,523
E012	St Mary with St Patrick	3,573	2,049	373	972	2,290	179	813
<b>TOTAL</b>		<b>59,820</b>	<b>30,589</b>	<b>10,109</b>	<b>13,194</b>	<b>29,182</b>	<b>5,928</b>	<b>12,026</b>

**Table 3: Population estimates, 2014 and 2011 and religion, 2011**

Parish ID	Parish name	Population estimates				Religion			
		2014	2011	2011, residents over 16	2011, working age population	Christian	Muslim	No religion	Other and not stated
E001	Corpus Christi	25,394	24,477	18,628	17,124	12,998	5,907	3,924	1,648
E002	Holy Family and Holy Rosary	18,580	17,635	13,262	12,278	10,735	1,707	3,927	1,266
E003	Sacred Heart and Our Lady	15,786	15,556	11,966	11,222	10,850	165	3,539	1,002
E004	St Aidan & St Oswald	20,999	21,132	17,086	15,421	15,282	1,518	2,994	1,338
E005	St Anne and St Michael	21,603	20,915	14,710	13,651	6,426	11,083	2,173	1,233
E006	St Christopher	23,977	23,810	18,875	17,371	14,565	1,063	5,668	2,514
E007	St Edward	14,709	14,679	11,964	10,899	10,299	761	2,699	920
E008	St Herbert	20,331	20,055	15,205	13,904	11,063	5,394	2,404	1,194
E009	St Joseph Mossley	11,132	10,985	8,830	8,153	7,295	178	2,702	810
E010	St Joseph Shaw	23,317	23,637	19,469	17,768	17,656	540	3,942	1,499
E011	St Mary and the Angels	29,550	28,913	23,086	21,213	15,844	3,884	5,910	3,275
E012	St Mary with St Patrick	21,787	21,033	14,804	13,860	5,509	12,353	1,606	1,565
<b>TOTAL</b>		<b>247,165</b>	<b>242,827</b>	<b>187,885</b>	<b>172,864</b>	<b>138,522</b>	<b>44,553</b>	<b>41,488</b>	<b>18,264</b>