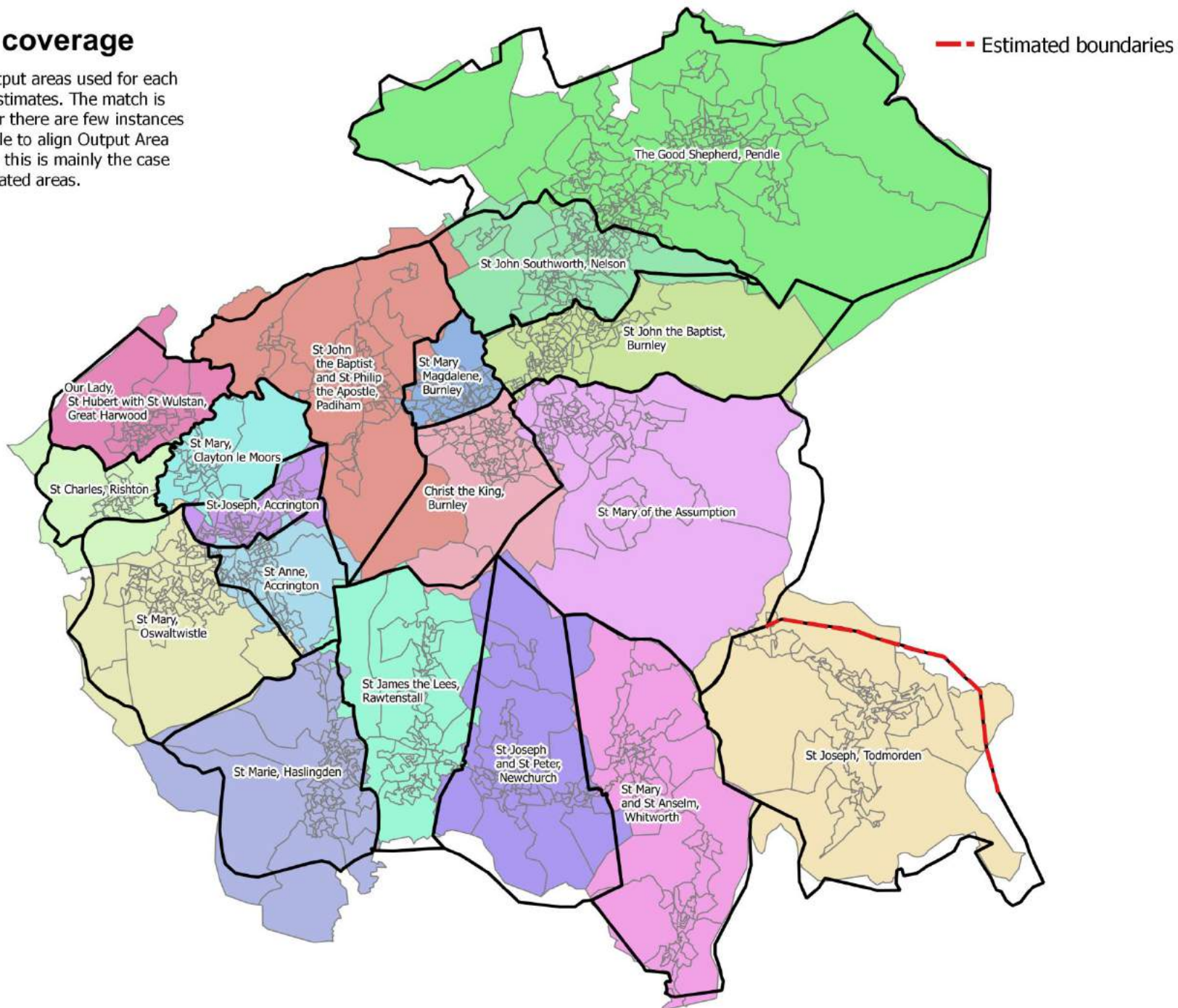


Thematic maps for the deanery of St John Vianney

June 2016

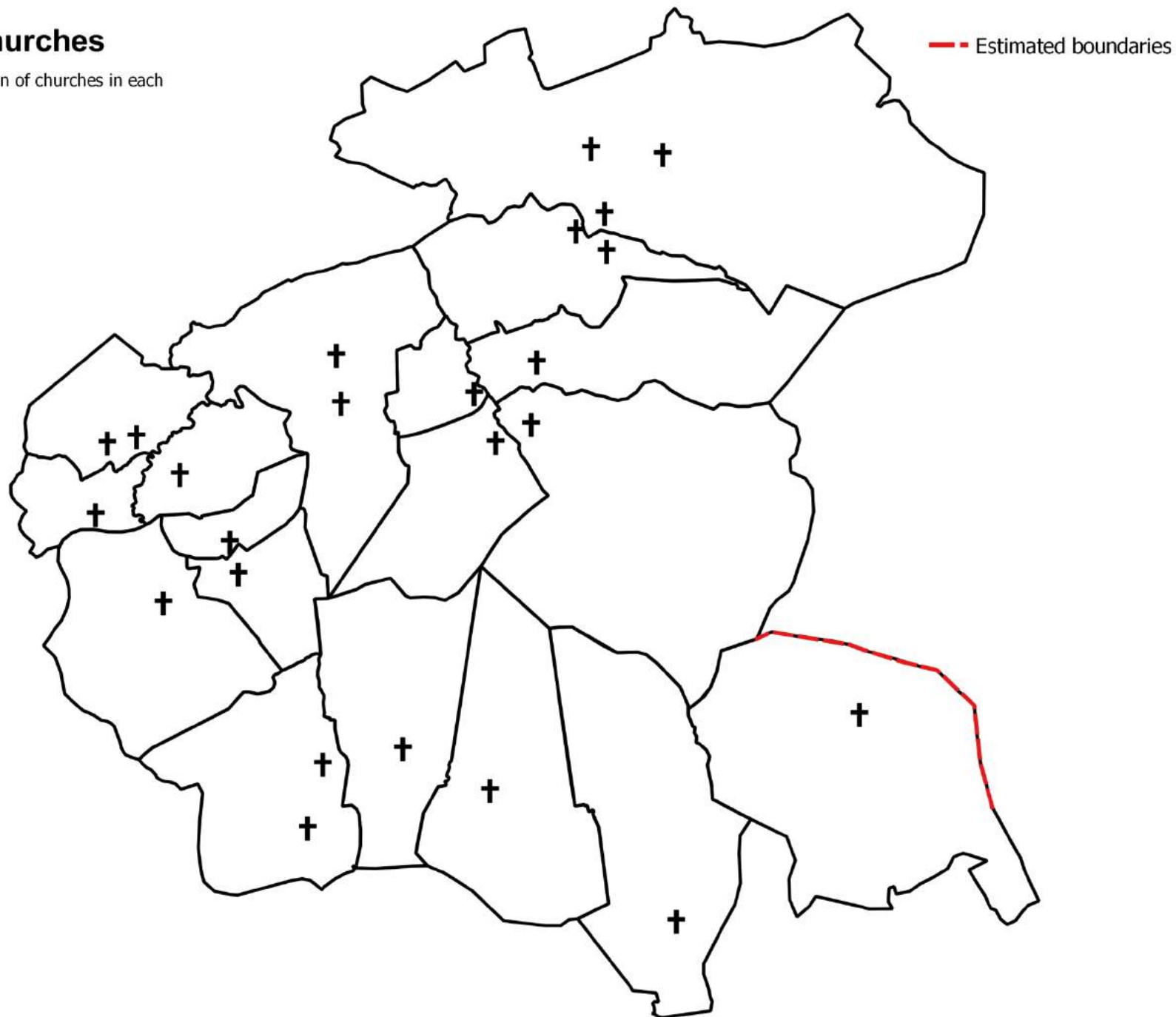
Output area coverage

This map shows the output areas used for each parish to produce the estimates. The match is generally good, however there are few instances where it was not possible to align Output Area and parish boundaries - this is mainly the case for more sparsely populated areas.



Location of churches

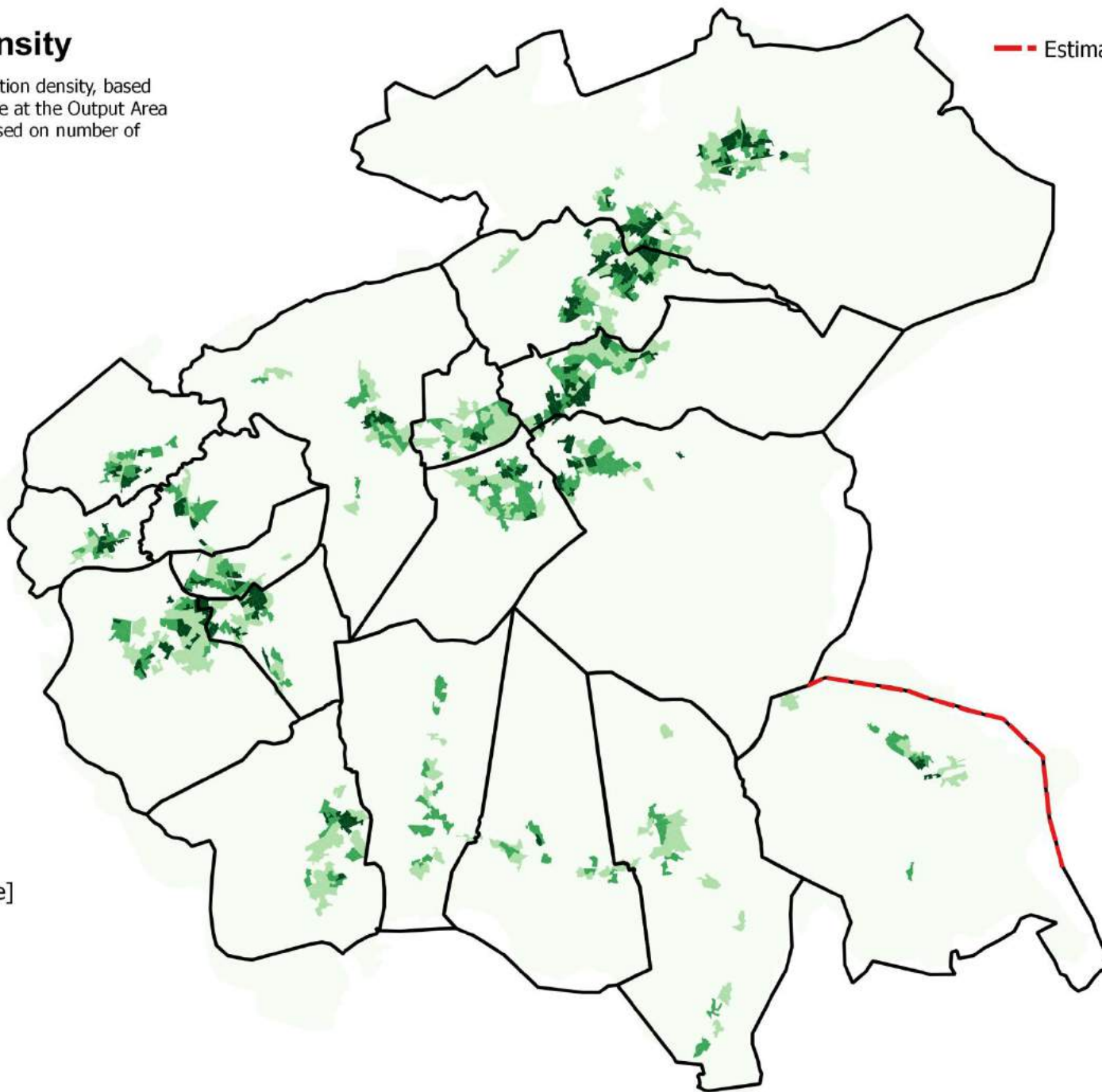
This map shows the location of churches in each parish in the deanery.



Population density

This map shows the population density, based on 2014 population estimate at the Output Area level. The density is expressed on number of persons per hectare.

Estimated boundaries



Legend

Population density
[persons per hectare]

- Up to 30
- 30 to 50
- 50 to 80
- Over 80

Christian population

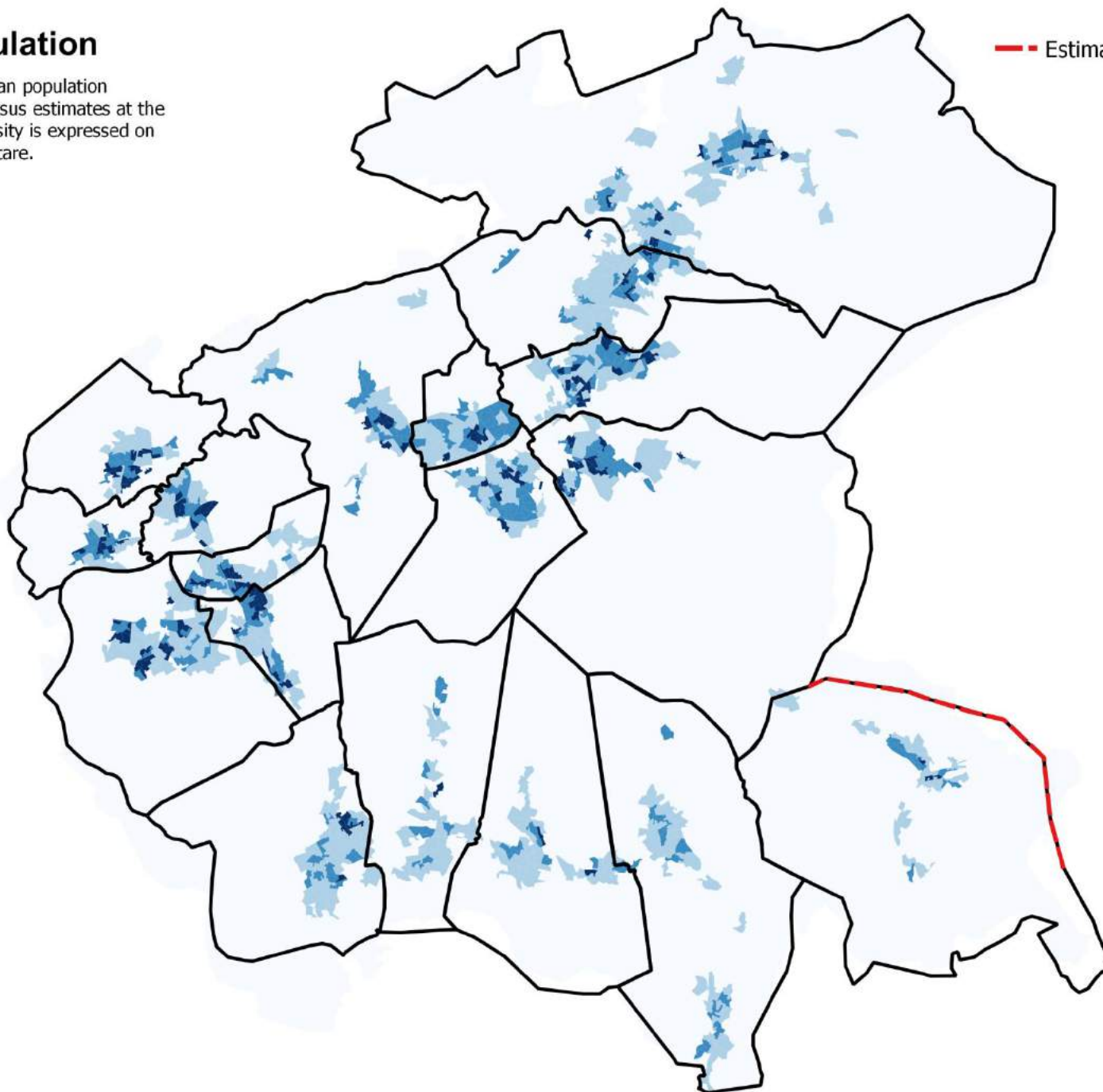
This map shows the Christian population density, based on 2011 Census estimates at the Output Area level. The density is expressed on number of persons per hectare.

Estimated boundaries

Legend

Christians
[persons per hectare]

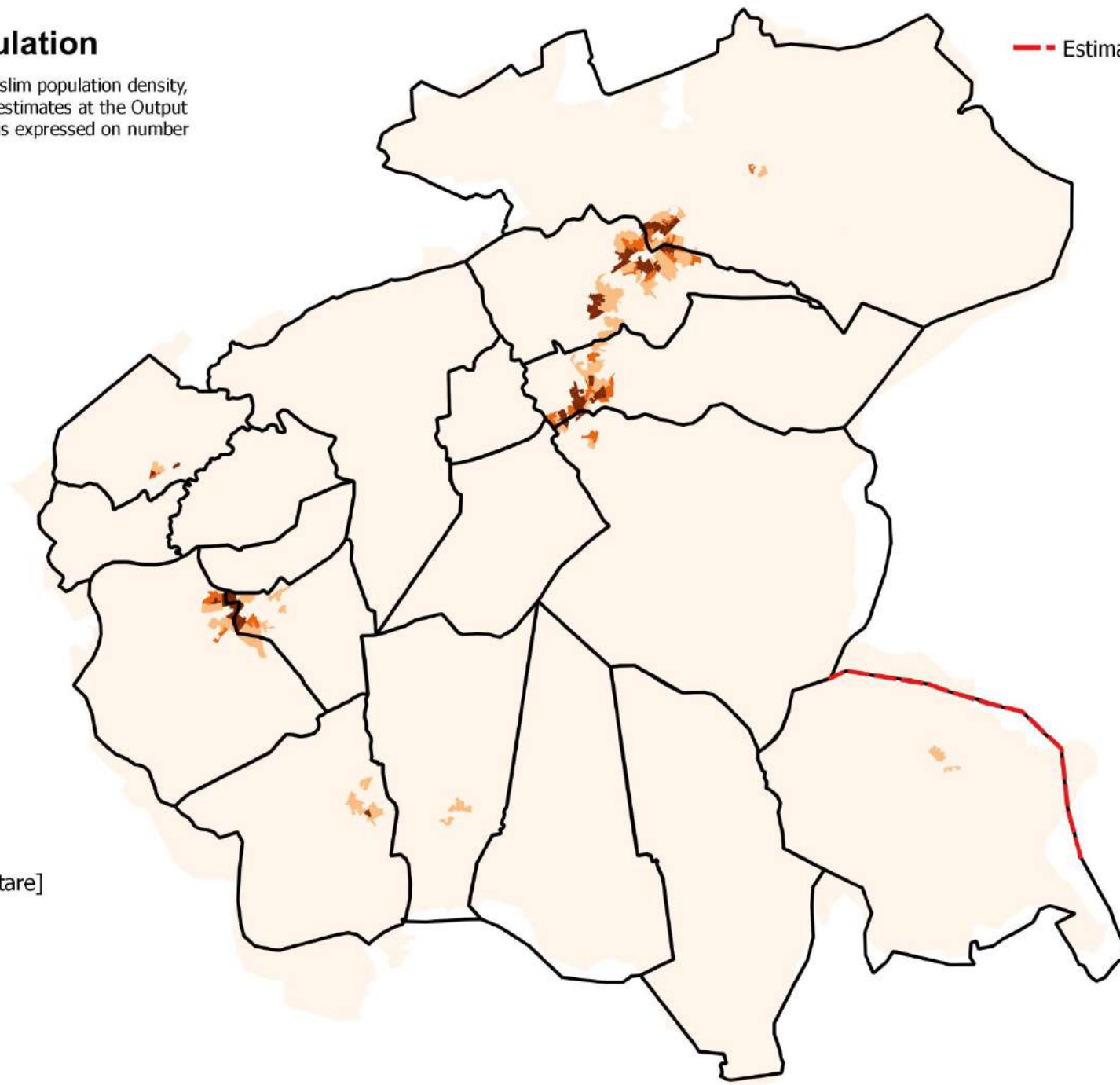
- Up to 10
- 10 to 30
- 30 to 50
- Over 50



Muslim population

This map shows the Muslim population density, based on 2011 Census estimates at the Output Area level. The density is expressed on number of persons per hectare.

Estimated boundaries



Legend

Muslim population
[persons per hectare]

- Up to 10
- 10 to 30
- 30 to 50
- Over 50

Population declaring 'no religion'

This map shows the density of the population declaring 'no religion', based on 2011 Census estimates at the Output Area level. The density is expressed on number of persons per hectare.

Estimated boundaries

Legend

Population declaring 'no religion'
[persons per hectare]

- Up to 10
- 10 to 30
- 30 to 50
- Over 50

