

Deanery of St John Vianney

Population analysis at the parish level

March 2016

Table of contents

Introduction	3
Parishes	
<i>Christ the King, Burnley</i>	4
<i>Our Lady, St Hubert with St Wulstan, Great Harwood</i>	5
<i>St Anne, Accrington</i>	6
<i>St Charles, Rishton</i>	7
<i>St James the Less, Rawtenstall</i>	8
<i>St John Southworth, Nelson</i>	9
<i>St John the Baptist and St Philip the Apostle, Padiham</i>	10
<i>St John the Baptist, Burnley</i>	11
<i>St Joseph and St Peter, Newchurch</i>	12
<i>St Joseph, Accrington</i>	13
<i>St Joseph, Todmorden</i>	14
<i>St Marie, Haslingden</i>	15
<i>St Mary and St Anselm, Bacup and Whitworth</i>	16
<i>St Mary Magdalene and St Augustine, Burnley</i>	17
<i>St Mary of the Assumption, Burnley</i>	18
<i>St Mary, Clayton-le-Moors</i>	19
<i>St Mary, Oswaldtwistle</i>	20
<i>The Good Shepherd, Pendle</i>	21
Annex A: Maps	22
Annex B: Data limitations	25
Annex C: Data tables	26

Introduction

Purpose

The aim of this report is to give the reader an easy access to key census statistics for selected parishes and hence provide contextual information to help better understand communities served by each parish. The maps in the annex help to view the parish in the context of neighbouring areas.

Report structure

This report presents **summary statistics for each parish** in the deanery of St John Vianney, providing: population estimates, age profile, declared religion, occupation and family situation. The report is complemented by a series of six maps showing, output area coverage, location of church buildings, overall population density (2014) and population density by religion (2011). Maps are included in Annex A. The data limitations are discussed in Annex B and the tables showing data for selected characteristics are shown in Annex C. The parishes are presented in the alphabetical order.

Coverage and boundary

Due to the statistical area and output area shapes, areas matched for three parishes¹ actually cover over 110 percent of the parish area. The additional, included area in all cases is a very sparsely populated industrial or green area and does not considerably affect presented statistics. Similarly, the parish area not covered in two parishes² with coverage below 90 percent is not a residential area and hence it has negligible effect on the estimates.

Part of the boundary for St Joseph, Todmorden parish was estimated, as no boundary information was supplied. This is marked on the maps in Annex A by red, dotted line. The relevant parts of this report can be revised if the description of these boundaries is provided.

Deanery level overview

Overall, the deanery, consisting of **18 parishes**, covers the area of just under 464 square kilometers (46.4k hectares). The 2014 **population size** was estimated at 322k, which is roughly the same as Census 2011 estimate. Majority of usual residents were **aged** between 36 and 64 (39%), followed by those aged 18 to 35. Only 11 percent of the population was aged under 7. Just over 60 percent of the population declared their **religion** as Christian, followed by 21 percent declaring 'no religion' and 11 percent declaring a Muslim belief.

The **number of households** in the deanery was estimated at 136.2k, of which 28 percent did not have **access to a car** and just under a third rented their accommodation. Sixty-two per cent of all households were occupied by a family, and 32 percent were one person households, with 7 percent of all households being occupied by **a person over 65 living alone**. About 6 percent fell into other category.

It is also worth noting that the **between 2001 and 2011**, when the overall number of persons in the deanery remained fairly stable, the Christian population decreased by 16 percent (231.7k to 195.8k). At the same time Muslim population increased by 36 percent, from 25.9k to 35.2k and population declaring 'no religion' grew by 76 percent, from 38k to 67k.

¹ Parishes with overestimated area: St Charles, St John the Baptist and St Philip the Apostle and St Marie

² Parishes with underestimated area: Christ the King, St Mary of the Assumption

Christ the King, Burnley

Parish Priest: Fr Brian Kealey

Area & Population

- Christ the King's parish covers the area of 1,659 hectares, and the average **population density** is 11 persons per hectare.
- The parish population size **remains fairly stable**. On 30th June 2014, the total number of usual residents was estimated at 16.3k. This is 1 percent (133 persons) lower than the Census 2011 estimate of 16.5k.
- Census 2011 estimates the total **number of households** in the parish at 7.2k.

Demographics

- Most of the usual residents (39%) are **aged** between 36 and 64, followed by 23 percent aged between 18 to 35, with only 10 percent aged below 7 years old.
- In the parish area, 66 percent of the population declared their **religion** as Christian. Muslims accounted for only 1 percent of the population, and 25 percent of all residents declared 'no religion'. The Christian population **decreased in line with** the decrease observed between 2001 and 2011 at the deanery level.
- Most residents in the parish (40%) declared their marital status as: '**Married**'.

Economy

- Of the 2011 population only 2 percent arrived in the UK between 2001 and 2011.
- Most of the people (55%) in the parish declare their main economic activity as '**employed**', followed by 15 percent being a '**retired person**'. Manufacturing industry gives employment to the largest proportion of economically active people in this area. Those in employment are mainly engaged in elementary occupations roles. Nearly a third of those in employment works less than 30 hours per week.

Families

- Of all households in the parish, 60 percent are occupied by a single **family**, 34 percent are one person households (of which 12 percent are 'single, over 65') and 6 percent fall into 'other' category (mainly shared houses or households with lodgers).
- Of the 'one family' households, 45 percent consist of **married couples**, 20 percent are cohabiting and 24 percent are **lone parents**. Forty-five percent of one family households have dependent children, and 12 percent are families with all members aged over 65.
- In the parish area, 39 percent of households rent their accommodation, and 37 percent **do not** have access to car.

Data coverage & accuracy

- Matched census areas covered 89 percent of the parish area.

Our Lady, St Hubert with St Wulstan, Great Harwood

Parish Priest: Fr J Anthony Clarke

Area & Population

- Our Lady and St Hubert with St Wulstan's parish covers the area of 1,185 hectares, and the average **population density** is 9 persons per hectare.
- The parish population size **remains fairly stable**. On 30th June 2014, the total number of usual residents was estimated at 10.8k. This is 0 percent (8 persons) lower than the Census 2011 estimate of 10.8k.
- Census 2011 estimates the total **number of households** in the parish at 4.8k.

Demographics

- Most of the usual residents (39%) are **aged** between 36 and 64, followed by 21 percent aged between 18 to 35, with only 9 percent aged below 7 years old.
- In the parish area, 71 percent of the population declared their **religion** as Christian. Muslims accounted for 8 percent of the population, and 14 percent of all residents declared 'no religion'. The Christian population **decreased in line with** the decrease observed between 2001 and 2011 at the deanery level.
- Most residents in the parish (47%) declared their marital status as: '**Married**'.

Economy

- Of the 2011 only 2 percent arrived in the UK between 2001 and 2011.
- Most of the people (62%) in the parish declare their main economic activity as '**employed**', followed by 17 percent being a '**retired person**'. Manufacturing industry gives employment to the largest proportion of economically active people in this area. Those in employment are mainly engaged in skilled occupation roles. Twenty-eight percent of those in employment work less than 30 hours per week.

Families

- Of all households in the parish, 62 percent are occupied by a single **family**, 34 percent are one person households (of which 14 percent are 'single, over 65') and 4 percent falls into 'other' category (mainly shared houses or households with lodgers).
- Of the 'one family' households, a half consist of **married couples**, 16 percent are cohabiting and 19 percent are **lone parents**. Forty-three percent of one family households have dependent children, and 15 percent are families with all members aged over 65.
- In the parish area, 28 percent of households rent their accommodation, and 25 percent **do not** have access to car.

Data coverage & accuracy

- Matched census areas covered 103 percent of the parish area.

St Anne, Accrington

Parish Priest: Fr Simon Stamp

Area & Population

- St Anne's parish covers the area of 880 hectares, and the average **population density** is 18 persons per hectare.
- The parish population size **remains fairly stable**. On 30th June 2014, the total number of usual residents was estimated at 17.4k. This is 1 percent (122 persons) lower than the Census 2011 estimate of 17.5k.
- Census 2011 estimates the total **number of households** in the parish at 7.2k.

Demographics

- Most of the usual residents (36%) are **aged** between 36 and 64, followed by 25 percent aged between 18 to 35, with only 12 percent aged below 7 years old.
- In the parish area, 54 percent of the population declared their **religion** as Christian. Muslims accounted for nearly the quarter of the population, and 16 percent of all residents declared 'no religion'. The Christian population **decreased in line with** the decrease observed between 2001 and 2011 at the deanery level.
- Most residents in the parish (47%) declared their marital status as: '**Married**'.

Economy

- Of the 2011 population only 1 percent **arrived** in the UK in two years before the census, and 4 percent arrived between 2001 and 2011.
- Most of the people (57%) in the parish declare their main economic activity as '**employed**', followed by 13 percent being a '**retired person**'. Retail industry gives employment to the largest proportion of economically active people in this area. Those in employment are mainly engaged in skilled occupation roles. Nearly a third of those in employment work less than 30 hours per week.

Families

- Of all households in the parish, 60 percent are occupied by a single **family**, 33 percent are one person households (of which 12 percent are 'single, over 65') and 7.09 percent falls into 'other' category (mainly shared houses or households with lodgers).
- Of the 'one family' households, 52 percent consist of **married couples**, 16 percent are cohabiting and 21 percent are **lone parents**. Forty-eight percent of one family households have dependent children, and 11 percent are families with all members aged over 65.
- In the parish area, 32 percent of households rent their accommodation, and 33 percent **do not** have access to car.

Data coverage & accuracy

- Matched census areas covered 107 percent of the parish area.

St Charles, Rishton

Parish Priest: Fr Martin C Dowd

Area & Population

- St Charles's parish covers the area of 687 hectares, and the average **population density** is 6 persons per hectare.
- The parish population size **remains fairly stable**. On 30th June 2014, the total number of usual residents was estimated at 6.5k. This is 2 percent (116 persons) lower than the Census 2011 estimate of 6.6k.
- Census 2011 estimates the total **number of households** in the parish at 2.9k.

Demographics

- Most of the usual residents (40%) are **aged** between 36 and 64, followed by 21 percent aged between 18 to 35, with only 9 percent aged below 7 years old.
- In the parish area, 77 percent of the population declared their **religion** as Christian. Muslims accounted for only 1 percent of the population, and 16 percent of all residents declared 'no religion'. The Christian population **decreased in line with** the decrease observed between 2001 and 2011 at the deanery level.
- Most residents in the parish (47%) declared their marital status as: '**Married**'.

Economy

- Of the 2011 only 1 percent arrived in the UK between 2001 and 2011.
- Most of the people (61%) in the parish declare their main economic activity as '**employed**', followed by 17 percent being a '**retired person**'. Manufacturing industry gives employment to the largest proportion of economically active people in this area. Those in employment are mainly engaged in skilled occupation roles. Twenty-eight percent of those in employment work less than 30 hours per week.

Families

- Of all households in the parish, 64 percent are occupied by a single **family**, 32 percent are one person households (of which 12 percent are 'single, over 65') and 5 percent falls into 'other' category (mainly shared houses or households with lodgers).
- Of the 'one family' households, 51 percent consist of **married couples**, 16 percent are cohabiting and 19 percent are **lone parents**. Forty-three percent of one family households have dependent children, and 14 percent are families with all members aged over 65.
- In the parish area, 28 percent of households rent their accommodation, and 25 percent **do not** have access to car.

Data coverage & accuracy

- Matched census areas covered 161 percent of the parish area. Due to the shape of the Output area sparsely populated, non-residential areas outside parish boundary were included in the analysis. It does not significantly affect presented socio-demographics.

St James the Less, Rawtenstall

Parish Priest: Fr Canon David Lupton

Area & Population

- St James the Lees's parish covers the area of 2,437 hectares, and the average **population density** is 7 persons per hectare.
- The parish population size **is growing**. On 30th June 2014, the total number of usual residents was estimated at 15.8k. This is 3 percent (416 persons) higher than the Census 2011 estimate of 15.4k.
- Census 2011 estimates the total **number of households** in the parish at 6.4k.

Demographics

- Most of the usual residents (42%) are **aged** between 36 and 64, followed by 21 percent aged between 18 to 35, with only 10 percent aged below 7 years old.
- In the parish area, 63 percent of the population declared their **religion** as Christian. Muslims accounted for 6 percent of the population, and 23 percent of all residents declared 'no religion'. The Christian population **decreased in line with** the decrease observed between 2001 and 2011 at the deanery level.
- Most residents in the parish (49%) declared their marital status as: '**Married**'.

Economy

- Of the 2011 2 percent arrived in the UK between 2001 and 2011.
- Most of the people (65%) in the parish declare their main economic activity as '**employed**', followed by 15 percent being a '**retired person**'. Retail industry gives employment to the largest proportion of economically active people in this area. Those in employment are mainly engaged in professional services roles. Twenty-seven percent of those in employment work less than 30 hours per week.

Families

- Of all households in the parish, 65 percent are occupied by a single **family**, 29 percent are one person households (of which 11 percent are 'single, over 65') and 6 percent falls into 'other' category (mainly shared houses or households with lodgers).
- Of the 'one family' households, 57 percent consist of **married couples**, 18 percent are cohabiting and 15 percent are **lone parents**. Forty-two percent of one family households have dependent children, and 11 percent are families with all members aged over 65.
- In the parish area, 26 percent of households rent their accommodation, and 19 percent **do not** have access to car.

Data coverage & accuracy

- Matched census areas covered 93 percent of the parish area.

St John Southworth, Nelson

Parish Priest: Fr Brian Murphy

Area & Population

- St John Southworth's parish covers the area of 1,781 hectares, and the average **population density** is 16 persons per hectare.
- The parish population size **remains fairly stable**. On 30th June 2014, the total number of usual residents was estimated at 29.7k. This is 1 percent (432 persons) higher than the Census 2011 estimate of 29.3k.
- Census 2011 estimates the total **number of households** in the parish at 11.1k.

Demographics

- Most of the usual residents (34%) are **aged** between 36 and 64, followed by 26 percent aged between 18 to 35, with only 13 percent aged below 7 years old.
- In the parish area, 41 percent of the population declared their **religion** as Christian. Muslims accounted for 38 percent of the population, and 13 percent of all residents declared 'no religion'. The Christian population **decreased in line with** the decrease observed between 2001 and 2011 at the deanery level.
- Most residents in the parish (52%) declared their marital status as: '**Married**'.

Economy

- Of the 2011 population 2 percent **arrived** in the UK in two years before the census, and 7 percent arrived between 2001 and 2011.
- Most of the people (52%) in the parish declare their main economic activity as '**employed**', followed by 14 percent being a '**retired person**'. Manufacturing industry gives employment to the largest proportion of economically active people in this area. Those in employment are mainly engaged in process, plant and machine operative roles. Nearly a third of those in employment work less than 30 hours per week.

Families

- Of all households in the parish, 60 percent are occupied by a single **family**, 31 percent are one person households (of which 12 percent are 'single, over 65') and 9 percent falls into 'other' category (mainly shared houses or households with lodgers).
- Of the 'one family' households, 56 percent consist of **married couples**, 13 percent are cohabiting and 17 percent are **lone parents**. Forty-six percent of one family households have dependent children, and 13 percent are families with all members aged over 65.
- In the parish area, 28 percent of households rent their accommodation, and 30 percent **do not** have access to car.

Data coverage & accuracy

- Matched census areas covered 102 percent of the parish area.

St John the Baptist and St Philip the Apostle, Padiham

Parish Priest: Fr Allan Swift

Area & Population

- St John the Baptist and St Philip the Apostle's parish covers the area of 3,187 hectares, and the average **population density** is 4 persons per hectare.
- The parish population size **remains fairly stable**. On 30th June 2014, the total number of usual residents was estimated at 16.5k. This is 1 percent (160 persons) higher than the Census 2011 estimate of 16.3k.
- Census 2011 estimates the total **number of households** in the parish at 7.3k.

Demographics

- Most of the usual residents (41%) are **aged** between 36 and 64, followed by 21 percent aged between 18 to 35, with only 10 percent aged below 7 years old.
- In the parish area, 73 percent of the population declared their **religion** as Christian. Muslims accounted for only 1 percent of the population, and a fifth of all residents declared 'no religion'. The Christian population **decreased in line with** the decrease observed between 2001 and 2011 at the deanery level.
- Most residents in the parish (47%) declared their marital status as: '**Married**'.

Economy

- Of the 2011 population only 1 percent arrived in the UK between 2001 and 2011.
- Most of the people (63%) in the parish declare their main economic activity as '**employed**', followed by 16 percent being a '**retired person**'. Manufacturing industry gives employment to the largest proportion of economically active people in this area. Those in employment are mainly engaged in professional services roles. Twenty-eight percent of those in employment work less than 30 hours per week.

Families

- Of all households in the parish, 63 percent are occupied by a single **family**, 32 percent are one person households (of which 13 percent are 'single, over 65') and 4 percent falls into 'other' category (mainly shared houses or households with lodgers).
- Of the 'one family' households, 51 percent consist of **married couples**, 18 percent are cohabiting and 18 percent are **lone parents**. Forty-two percent of one family households have dependent children, and 13 percent are families with all members aged over 65.
- In the parish area, 31 percent of households rent their accommodation, and 24 percent **do not** have access to car.

Data coverage & accuracy

- Matched census areas covered 120 percent of the parish area. Due to the shape of the Output area sparsely populated, non-residential areas outside parish boundary were included in the analysis. It does not significantly affect presented socio-demographics.

St John the Baptist, Burnley

Parish Priest: Fr Michael Waters and Fr Kevin Tierney

Area & Population

- St John the Baptist's parish covers the area of 2,417 hectares, and the average **population density** is 11 persons per hectare.
- The parish population size **remains fairly stable**. On 30th June 2014, the total number of usual residents was estimated at 24.6k. This is 1 percent (241 persons) higher than the Census 2011 estimate of 24.3k.
- Census 2011 estimates the total **number of households** in the parish at 9.6k.

Demographics

- Most of the usual residents (35%) are **aged** between 36 and 64, followed by 25 percent aged between 18 to 35, with only 13 percent aged below 7 years old.
- In the parish area, a half of the population declared their **religion** as Christian. Muslims accounted for 28 percent of the population, and 14 percent of all residents declared 'no religion'. The Christian population **decreased in line with** the decrease observed between 2001 and 2011 at the deanery level.
- Most residents in the parish (49%) declared their marital status as: '**Married**'.

Economy

- Of the 2011 population only 1 percent **arrived** in the UK in two years before the census, and 6 percent arrived between 2001 and 2011.
- Most of the people (55%) in the parish declare their main economic activity as '**employed**', followed by 14 percent being a '**retired person**'. Health industry gives employment to the largest proportion of economically active people in this area. Those in employment are mainly engaged in professional services roles. Nearly a third of those in employment work less than 30 hours per week.

Families

- Of all households in the parish, 61 percent are occupied by a single **family**, 31 percent are one person households (of which 12 percent are 'single, over 65') and 8 percent falls into 'other' category (mainly shared houses or households with lodgers).
- Of the 'one family' households, 55 percent consist of **married couples**, 14 percent are cohabiting and 20 percent are **lone parents**. Forty-seven percent of one family households have dependent children, and 11 percent are families with all members aged over 65.
- In the parish area, 31 percent of households rent their accommodation, and 33 percent **do not** have access to car.

Data coverage & accuracy

- Matched census areas covered 92 percent of the parish area.

St Joseph and St Peter, Newchurch

Parish Priest: Fr Philip Boast

Area & Population

- St Joseph and St Peter's parish covers the area of 2,979 hectares, and the average **population density** is 5 persons per hectare.
- The parish population size **is growing**. On 30th June 2014, the total number of usual residents was estimated at 13.6k. This is 2 percent (292 persons) higher than the Census 2011 estimate of 13.3k.
- Census 2011 estimates the total **number of households** in the parish at 6k.

Demographics

- Most of the usual residents (41%) are **aged** between 36 and 64, followed by 22 percent aged between 18 to 35, with only 10 percent aged below 7 years old.
- In the parish area, 63 percent of the population declared their **religion** as Christian. Muslims accounted for only 1 percent of the population, and 28 percent of all residents declared 'no religion'. The Christian population **decreased in line with** the decrease observed between 2001 and 2011 at the deanery level.
- Most residents in the parish (42%) declared their marital status as: '**Married**'.

Economy

- Of the 2011 population only 1 percent arrived in the UK between 2001 and 2011.
- Most of the people (62%) in the parish declare their main economic activity as '**employed**', followed by 15 percent being a '**retired person**'. Retail industry gives employment to the largest proportion of economically active people in this area. Those in employment are mainly engaged in skilled occupation roles. Twenty-seven percent of those in employment work less than 30 hours per week.

Families

- Of all households in the parish, 61 percent are occupied by a single **family**, 34 percent are one person households (of which 13 percent are 'single, over 65') and 5 percent falls into 'other' category (mainly shared houses or households with lodgers).
- Of the 'one family' households, 48 percent consist of **married couples**, 21 percent are cohabiting and 20 percent are **lone parents**. Forty-three percent of one family households have dependent children, and 11 percent are families with all members aged over 65.
- In the parish area, 35 percent of households rent their accommodation, and 25 percent **do not** have access to car.

Data coverage & accuracy

- Matched census areas covered 101 percent of the parish area.

St Joseph, Accrington

Parish Priest: Fr Paul Blackburn

Area & Population

- St Joseph's parish covers the area of 537 hectares, and the average **population density** is 23 persons per hectare.
- The parish population size **is growing**. On 30th June 2014, the total number of usual residents was estimated at 12k. This is 2 percent (217 persons) higher than the Census 2011 estimate of 11.8k.
- Census 2011 estimates the total **number of households** in the parish at 5.2k.

Demographics

- Most of the usual residents (39%) are **aged** between 36 and 64, followed by 21 percent aged between 18 to 35, with only 10 percent aged below 7 years old.
- In the parish area, 70 percent of the population declared their **religion** as Christian. Muslims accounted for 4 percent of the population, and 20 percent of all residents declared 'no religion'. The Christian population **decreased in line with** the decrease observed between 2001 and 2011 at the deanery level.
- Most residents in the parish (43%) declared their marital status as: '**Married**'.

Economy

- Of the 2011 population 2 percent arrived in the UK between 2001 and 2011.
- Most of the people (57%) in the parish declare their main economic activity as '**employed**', followed by 17 percent being a '**retired person**'. Retail industry gives employment to the largest proportion of economically active people in this area. Those in employment are mainly engaged in skilled occupation roles. Twenty-nine percent of those in employment work less than 30 hours per week.

Families

- Of all households in the parish, 61 percent are occupied by a single **family**, 33 percent are one person households (of which 13 percent are 'single, over 65') and 5 percent falls into 'other' category (mainly shared houses or households with lodgers).
- Of the 'one family' households, 47 percent consist of **married couples**, 19 percent are cohabiting and 21 percent are **lone parents**. Forty-three percent of one family households have dependent children, and 13 percent are families with all members aged over 65.
- In the parish area, 33 percent of households rent their accommodation, and 30 percent **do not** have access to car.

Data coverage & accuracy

- Matched census areas covered 96 percent of the parish area.

St Joseph, Todmorden

Parish Priest: Fr Seamus Quigley

Area & Population

- St Joseph's parish covers the area of 4,782 hectares, and the average **population density** is 3 persons per hectare.
- The parish population size **is growing**. On 30th June 2014, the total number of usual residents was estimated at 15.5k. This is 2 percent (369 persons) higher than the Census 2011 estimate of 15.1k.
- Census 2011 estimates the total **number of households** in the parish at 6.8k.

Demographics

- Most of the usual residents (43%) are **aged** between 36 and 64, followed by 20 percent aged between 18 to 35, with only 9 percent aged below 7 years old.
- In the parish area, 54 percent of the population declared their **religion** as Christian. Muslims accounted for 3 percent of the population, and 33 percent of all residents declared 'no religion'. The Christian population **decreased in line with** the decrease observed between 2001 and 2011 at the deanery level.
- Most residents in the parish (43%) declared their marital status as: '**Married**'.

Economy

- Of the 2011 population 2 percent arrived in the UK between 2001 and 2011.
- Most of the people (62%) in the parish declare their main economic activity as '**employed**', followed by 15 percent being a '**retired person**'. Manufacturing industry gives employment to the largest proportion of economically active people in this area. Those in employment are mainly engaged in professional services roles. Nearly a third of those in employment work less than 30 hours per week.

Families

- Of all households in the parish, 59 percent are occupied by a single **family**, 34 percent are one person households (of which 13 percent are 'single, over 65') and 6 percent falls into 'other' category (mainly shared houses or households with lodgers).
- Of the 'one family' households, 50 percent consist of **married couples**, 21 percent are cohabiting and 18 percent are **lone parents**. Forty-two percent of one family households have dependent children, and 11 percent are families with all members aged over 65.
- In the parish area, 31 percent of households rent their accommodation, and 28.6 percent **do not** have access to car.

Data coverage & accuracy

- Matched census areas covered 102 percent of the parish area.

St Marie, Haslingden

Parish Priest: Fr John Mackie

Area & Population

- St Marie's parish covers the area of 2,367 hectares, and the average **population density** is 5 persons per hectare.
- The parish population size **remains fairly stable**. On 30th June 2014, the total number of usual residents was estimated at 17.7k. This is 1 percent (134 persons) higher than the Census 2011 estimate of 17.6k.
- Census 2011 estimates the total **number of households** in the parish at 7.3k.

Demographics

- Most of the usual residents (40%) are **aged** between 36 and 64, followed by 21 percent aged between 18 to 35, with only 10 percent aged below 7 years old.
- In the parish area, 63 percent of the population declared their **religion** as Christian. Muslims accounted for 8 percent of the population, and 22 percent of all residents declared 'no religion'. The Christian population **decreased in line with** the decrease observed between 2001 and 2011 at the deanery level.
- Most residents in the parish (48%) declared their marital status as: '**Married**'.

Economy

- Of the 2011 population 2 percent arrived in the UK between 2001 and 2011.
- Most of the people (64%) in the parish declare their main economic activity as '**employed**', followed by 15 percent being a '**retired person**'. Retail industry gives employment to the largest proportion of economically active people in this area. Those in employment are mainly engaged in professional services roles. Twenty-eight percent of those in employment work less than 30 hours per week.

Families

- Of all households in the parish, 64 percent are occupied by a single **family**, 31 percent are one person households (of which 12 percent are 'single, over 65') and 6 percent falls into 'other' category (mainly shared houses or households with lodgers).
- Of the 'one family' households, 55 percent consist of **married couples**, 16 percent are cohabiting and 17 percent are **lone parents**. Forty-four percent of one family households have dependent children, and 12 percent are families with all members aged over 65.
- In the parish area, 27 percent of households rent their accommodation, and 20 percent **do not** have access to car.

Data coverage & accuracy

- Matched census areas covered 137 percent of the parish area.

St Mary and St Anselm, Bacup and Whitworth

Parish Priest: Fr Frank Thorpe

Area & Population

- St Mary and St Anselm's parish covers the area of 3454 hectares, and the average **population density** is 6 persons per hectare.
- The parish population size **is growing**. On 30th June 2014, the total number of usual residents was estimated at 18.8k. This is 2 percent (301 persons) higher than the Census 2011 estimate of 18.5k.
- Census 2011 estimates the total **number of households** in the parish at 8k.

Demographics

- Most of the usual residents (42%) are **aged** between 36 and 64, followed by 21 percent aged between 18 to 35, with only 10 percent aged below 7 years old.
- In the parish area, 64 percent of the population declared their **religion** as Christian. Muslims accounted for only 1 percent of the population, and 28 percent of all residents declared 'no religion'. The Christian population **decreased in line with** the decrease observed between 2001 and 2011 at the deanery level.
- Most residents in the parish (46%) declared their marital status as: '**Married**'.

Economy

- Of the 2011 population only 1 percent arrived in the UK between 2001 and 2011.
- Most of the people (62%) in the parish declare their main economic activity as '**employed**', followed by 15 percent being a '**retired person**'. Retail industry gives employment to the largest proportion of economically active people in this area. Those in employment are mainly engaged in professional services roles. Twenty-eight percent of those in employment work less than 30 hours per week.

Families

- Of all households in the parish, 65 percent are occupied by a single **family**, 30 percent are one person households (of which 11 percent are 'single, over 65') and 5 percent falls into 'other' category (mainly shared houses or households with lodgers).
- Of the 'one family' households, 51 percent consist of **married couples**, 20 percent are cohabiting and 18 percent are **lone parents**. Forty-three percent of one family households have dependent children, and 11 percent are families with all members aged over 65.
- In the parish area, 31 percent of households rent their accommodation, and 24 percent **do not** have access to car.

Data coverage & accuracy

- Matched census areas covered 97 percent of the parish area.

St Mary Magdalene and St Augustine, Burnley

Parish Priest: Fr Michael Haworth

Area & Population

- St Mary Magdalene and St Augustine's parish covers the area of 564 hectares, and the average **population density** is 27 persons per hectare.
- The parish population size **remains fairly stable**. On 30th June 2014, the total number of usual residents was estimated at 14k, which is roughly the same as Census 2011 estimate.
- Census 2011 estimates the total **number of households** in the parish at 6k.

Demographics

- Most of the usual residents (41%) are **aged** between 36 and 64, followed by 22 percent aged between 18 to 35, with only 9 percent aged below 7 years old.
- In the parish area, 70 percent of the population declared their **religion** as Christian. Muslims accounted for 1 percent of the population, and 22 percent of all residents declared 'no religion'. The Christian population **decreased in line with** the decrease observed between 2001 and 2011 at the deanery level.
- Most residents in the parish (46%) declared their marital status as: '**Married**'.

Economy

- Of the 2011 population only 1 percent arrived between 2001 and 2011.
- Most of the people (65%) in the parish declare their main economic activity as '**employed**', followed by 15 percent being a '**retired person**'. Manufacturing industry gives employment to the largest proportion of economically active people in this area. Those in employment are mainly engaged in skilled occupation roles. Twenty-seven percent of those in employment work less than 30 hours per week.

Families

- Of all households in the parish, 65 percent are occupied by a single **family**, 30 percent are one person households (of which 12 percent are 'single, over 65') and 5 percent falls into 'other' category (mainly shared houses or households with lodgers).
- Of the 'one family' households, 53 percent consist of **married couples**, 18 percent are cohabiting and 18 percent are **lone parents**. Forty-three percent of one family households have dependent children, and 11 percent are families with all members aged over 65.
- In the parish area, 25 percent of households rent their accommodation, and 24 percent **do not** have access to car.

Data coverage & accuracy

- Matched census areas covered 93 percent of the parish area.

St Mary of the Assumption, Burnley

Parish Priest: Fr Peter Hopkinson and Fr Derek McCartney

Area & Population

- St Mary of the Assumption's parish covers the area of 5,413 hectares, and the average **population density** is 4 persons per hectare.
- The parish population size **remains fairly stable**. On 30th June 2014, the total number of usual residents was estimated at 19.3k. This is 1 percent (156 persons) higher than the Census 2011 estimate of 19.2k.
- Census 2011 estimates the total **number of households** in the parish at 8.9k.

Demographics

- Most of the usual residents (40%) are **aged** between 36 and 64, followed by 21 percent aged between 18 to 35, with only 9 percent aged below 7 years old.
- In the parish area, 68 percent of the population declared their **religion** as Christian. Muslims accounted for 7 percent of the population, and 19 percent of all residents declared 'no religion'. The Christian population **decreased in line with** the decrease observed between 2001 and 2011 at the deanery level.
- Most residents in the parish (44%) declared their marital status as: '**Married**'.

Economy

- Of the 2011 population 2 percent arrived in the UK between 2001 and 2011.
- Most of the people (56%) in the parish declare their main economic activity as '**employed**', followed by 18 percent being a '**retired person**'. Retail industry gives employment to the largest proportion of economically active people in this area. Those in employment are mainly engaged in skilled occupation roles. Nearly a third of those in employment work less than 30 hours per week.

Families

- Of all households in the parish, 57 percent are occupied by a single **family**, 37 percent are one person households (of which 15 percent are 'single, over 65') and 5 percent falls into 'other' category (mainly shared houses or households with lodgers).
- Of the 'one family' households, 49 percent consist of **married couples**, 16 percent are cohabiting and 20 percent are **lone parents**. Forty percent of one family households have dependent children, and 14 percent are families with all members aged over 65.
- In the parish area, 37 percent of households rent their accommodation, and 36 percent **do not** have access to car.

Data coverage & accuracy

- Matched census areas covered 87 percent of the parish area.

St Mary, Clayton-le-Moors

Parish Priest: Fr Derek McCartney

Area & Population

- St Mary's parish covers the area of 985 hectares, and the average **population density** is 9 persons per hectare.
- The parish population size **remains fairly stable**. On 30th June 2014, the total number of usual residents was estimated at 9.4k. This is 2 percent (214 persons) lower than the Census 2011 estimate of 9.7k.
- Census 2011 estimates the total **number of households** in the parish at 4k.

Demographics

- Most of the usual residents (40%) are **aged** between 36 and 64, followed by 23 percent aged between 18 to 35, with only 10 percent aged below 7 years old.
- In the parish area, 74 percent of the population declared their **religion** as Christian. Muslims accounted for 2 percent of the population, and 18 percent of all residents declared 'no religion'. The Christian population **decreased in line with** the decrease observed between 2001 and 2011 at the deanery level.
- Most residents in the parish (46%) declared their marital status as: '**Married**'.

Economy

- Of the 2011 population only 1 percent arrived between 2001 and 2011.
- Most of the people (65%) in the parish declare their main economic activity as '**employed**', followed by 14 percent being a '**retired person**'. Retail industry gives employment to the largest proportion of economically active people in this area. Those in employment are mainly engaged in skilled occupation roles. Twenty-six percent of those in employment work less than 30 hours per week.

Families

- Of all households in the parish, 66 percent are occupied by a single **family**, 28.6 percent are one person households (of which 9 percent are 'single, over 65') and 5 percent falls into 'other' category (mainly shared houses or households with lodgers).
- Of the 'one family' households, 54 percent consist of **married couples**, 18 percent are cohabiting and 19 percent are **lone parents**. Forty-seven percent of one family households have dependent children, and 9 percent are families with all members aged over 65.
- In the parish area, 28 percent of households rent their accommodation, and 21 percent **do not** have access to car.

Data coverage & accuracy

- Matched census areas covered 103 percent of the parish area.

St Mary, Oswaltwistle

Parish Priest: Msgr John A Daly

Area & Population

- St Mary's parish covers the area of 2,536 hectares, and the average **population density** is 9 persons per hectare.
- The parish population size **remains fairly stable**. On 30th June 2014, the total number of usual residents was estimated at 22.2k. This is 1 percent (201 persons) lower than the Census 2011 estimate of 22.4k.
- Census 2011 estimates the total **number of households** in the parish at 9.44k.

Demographics

- Most of the usual residents (37%) are **aged** between 36 and 64, followed by 23 percent aged between 18 to 35, with only 11 percent aged below 7 years old.
- In the parish area, 64 percent of the population declared their **religion** as Christian. Muslims accounted for 12 percent of the population, and 17 percent of all residents declared 'no religion'. The Christian population **decreased in line with** the decrease observed between 2001 and 2011 at the deanery level.
- Most residents in the parish (45%) declared their marital status as: '**Married**'.

Economy

- Of the 2011 population 1 percent **arrived** in the UK in two years before the census, and 3 percent arrived between 2001 and 2011.
- Most of the people (57%) in the parish declare their main economic activity as '**employed**', followed by 15 percent being a '**retired person**'. Retail industry gives employment to the largest proportion of economically active people in this area. Those in employment are mainly engaged in skilled occupation roles. Twenty-nine percent of those in employment work less than 30 hours per week.

Families

- Of all households in the parish, 62 percent are occupied by a single **family**, 32 percent are one person households (of which 13 percent are 'single, over 65') and 6 percent falls into 'other' category (mainly shared houses or households with lodgers).
- Of the 'one family' households, 49 percent consist of **married couples**, 18 percent are cohabiting and 21 percent are **lone parents**. Forty-six percent of one family households have dependent children, and 12 percent are families with all members aged over 65.
- In the parish area, 34 percent of households rent their accommodation, and 31 percent **do not** have access to car.

Data coverage & accuracy

- Matched census areas covered 96 percent of the parish area.

The Good Shepherd, Pendle

Parish Priest: Fr Christopher Gorton

Area & Population

- The Good Shepherd's parish covers the area of 8550 hectares, and the average **population density** is 5 persons per hectare.
- The parish population size **remains fairly stable**. On 30th June 2014, the total number of usual residents was estimated at 41.7k. This is roughly the same as Census 2011 estimate.
- Census 2011 estimates the total **number of households** in the parish at 18k.

Demographics

- Most of the usual residents (39%) are **aged** between 36 and 64, followed by 23 percent aged between 18 to 35, with only 11 percent aged below 7 years old.
- In the parish area, 58 percent of the population declared their **religion** as Christian. Muslims accounted for 10 percent of the population, and 25 percent of all residents declared 'no religion'. The Christian population **decreased in line with** the decrease observed between 2001 and 2011 at the deanery level.
- Most residents in the parish (45%) declared their marital status as: '**Married**'.

Economy

- Of the 2011 population only 1 percent **arrived** in the UK in two years before the census, and 3 percent arrived between 2001 and 2011.
- Most of the people (61%) in the parish declare their main economic activity as '**employed**', followed by 15 percent being a '**retired person**'. Manufacturing industry gives employment to the largest proportion of economically active people in this area. Those in employment are mainly engaged in skilled occupation roles. Nearly a third of those in employment work less than 30 hours per week.

Families

- Of all households in the parish, 60 percent are occupied by a single **family**, 34 percent are one person households (of which 13 percent are 'single, over 65') and 6 percent falls into 'other' category (mainly shared houses or households with lodgers).
- Of the 'one family' households, 51 percent consist of **married couples**, 19 percent are cohabiting and 18 percent are **lone parents**. Forty-four percent of one family households have dependent children, and 12 percent are families with all members aged over 65.
- In the parish area, a third of all households rent their accommodation, and 28 percent **do not** have access to car.

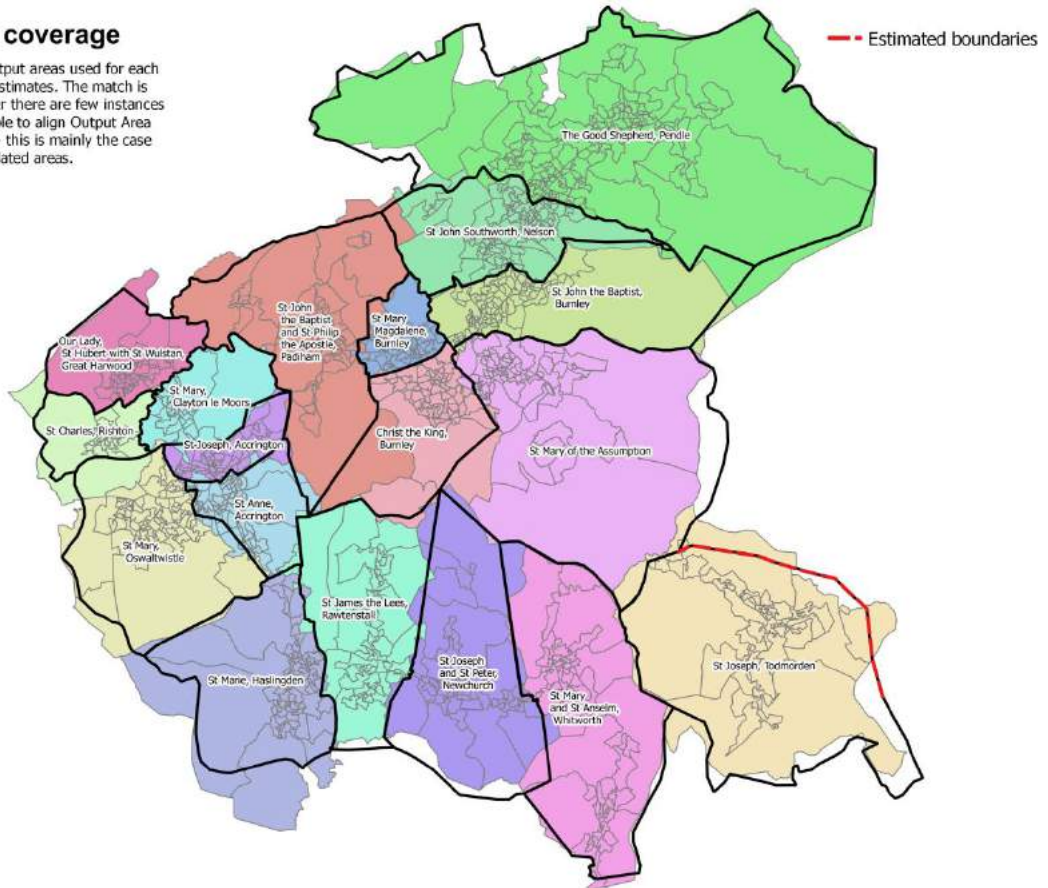
Data coverage & accuracy

- Matched census areas covered 102 percent of the parish area.

Annex A: Maps

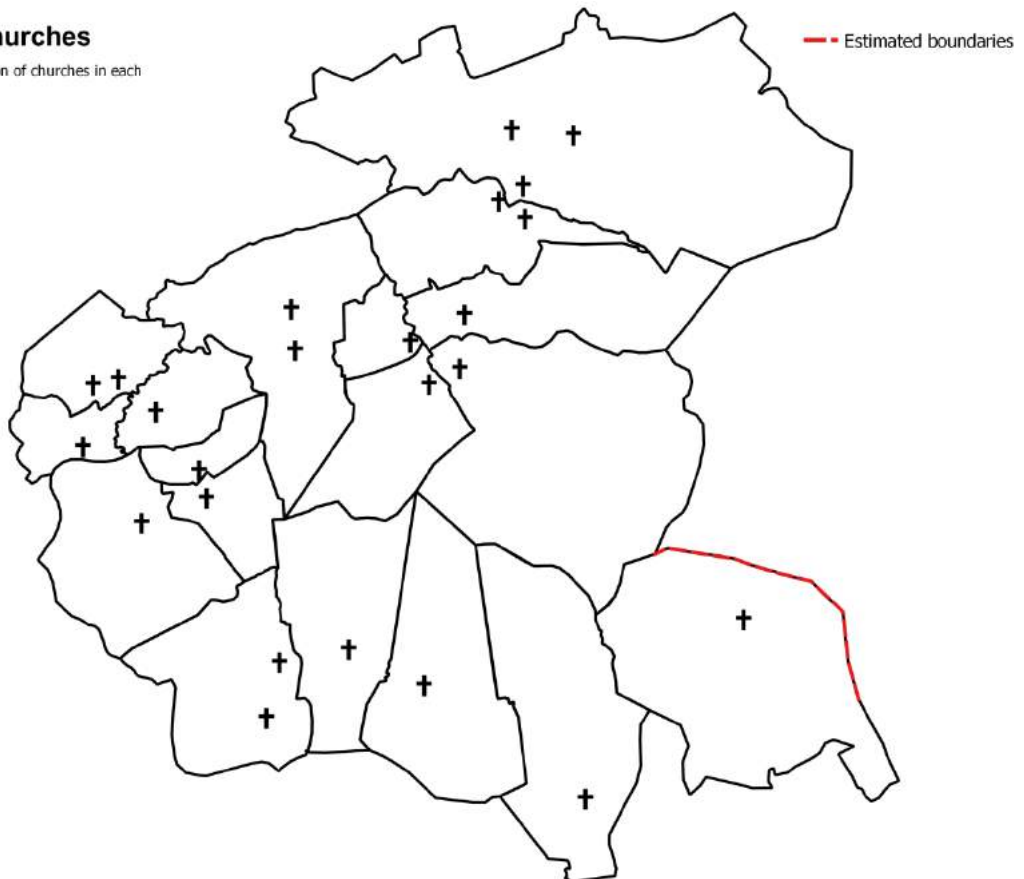
Output area coverage

This map shows the output areas used for each parish to produce the estimates. The match is generally good, however there are few instances where it was not possible to align Output Area and parish boundaries - this is mainly the case for more sparsely populated areas.



Location of churches

This map shows the location of churches in each parish in the deanery.



Population density

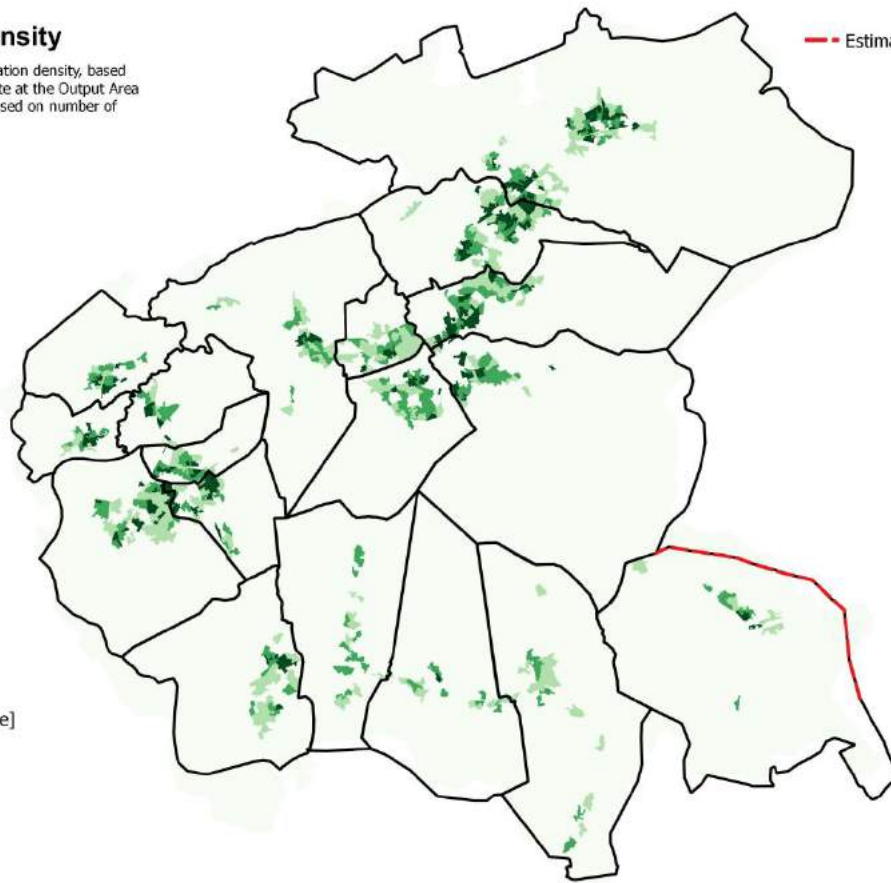
This map shows the population density, based on 2014 population estimate at the Output Area level. The density is expressed on number of persons per hectare.

--- Estimated boundaries

Legend

Population density
[persons per hectare]

- Up to 30
- 30 to 50
- 50 to 80
- Over 80



Christian population

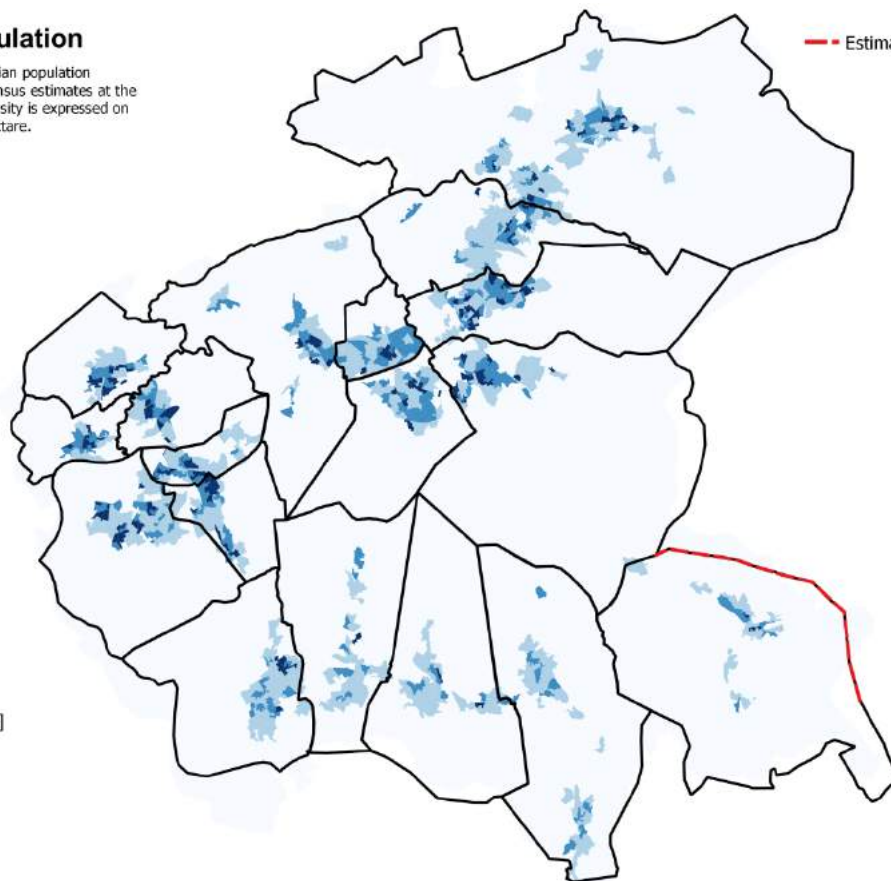
This map shows the Christian population density, based on 2011 Census estimates at the Output Area level. The density is expressed on number of persons per hectare.

--- Estimated boundaries

Legend

Christians
[persons per hectare]

- Up to 10
- 10 to 30
- 30 to 50
- Over 50



Muslim population

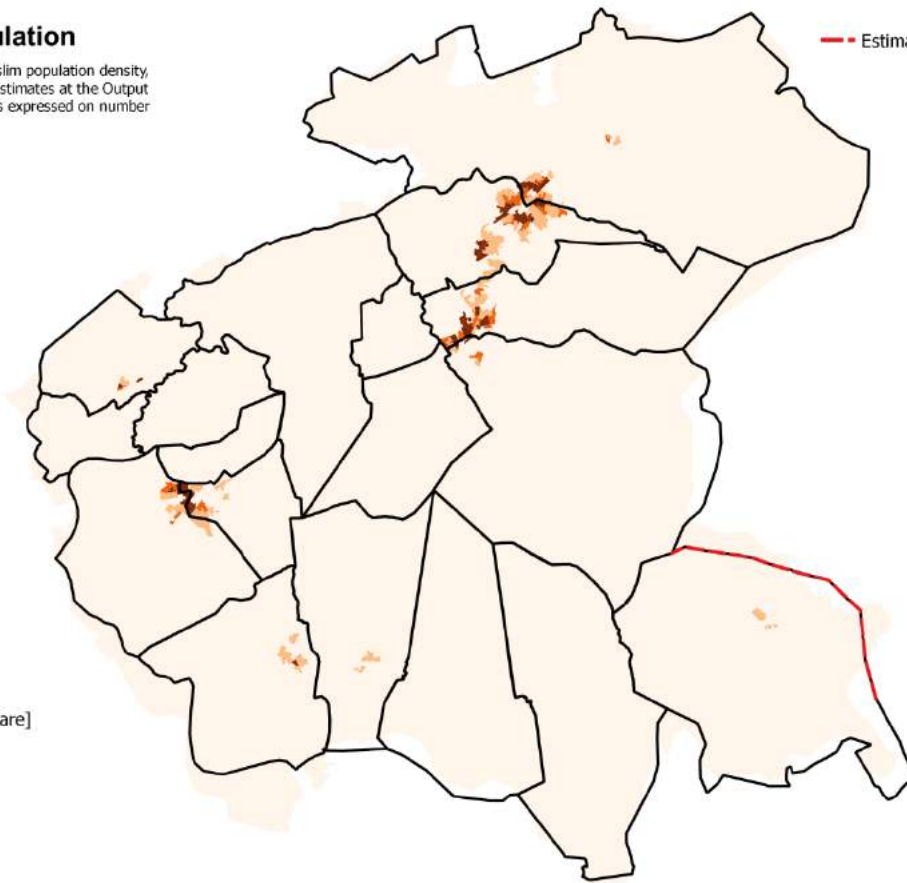
This map shows the Muslim population density, based on 2011 Census estimates at the Output Area level. The density is expressed on number of persons per hectare.

--- Estimated boundaries

Legend

Muslim population
[persons per hectare]

- Up to 10
- 10 to 30
- 30 to 50
- Over 50



Population declaring 'no religion'

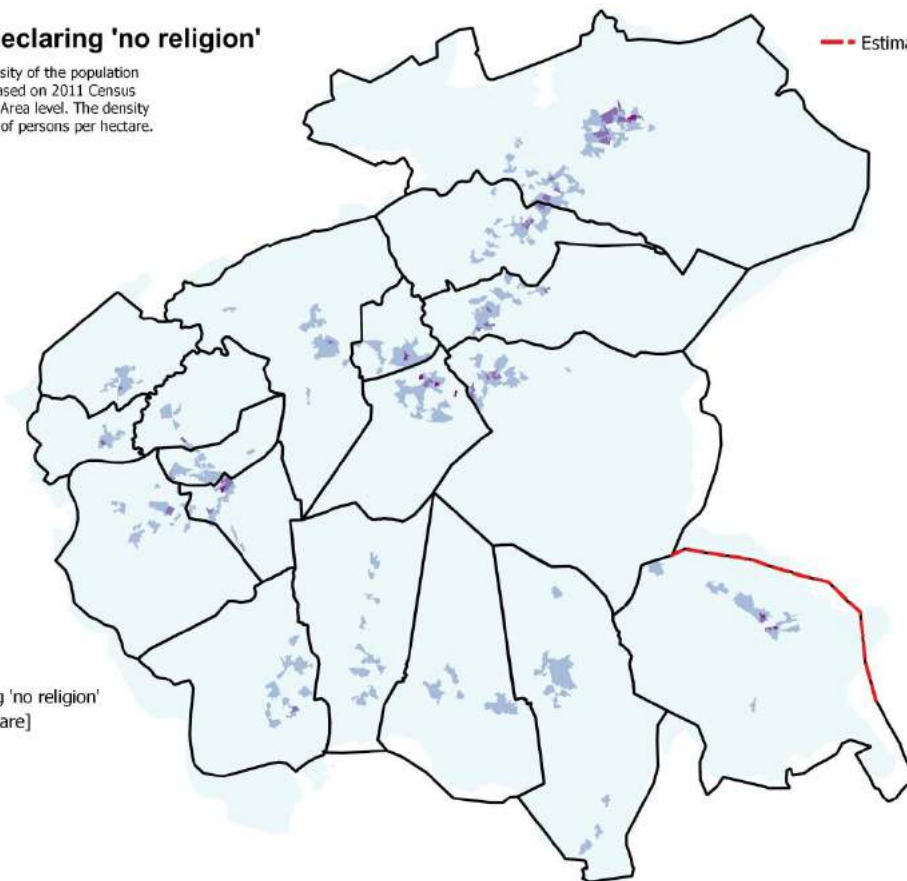
This map shows the density of the population declaring 'no religion', based on 2011 Census estimates at the Output Area level. The density is expressed on number of persons per hectare.

--- Estimated boundaries

Legend

Population declaring 'no religion'
[persons per hectare]

- Up to 10
- 10 to 30
- 30 to 50
- Over 50



Annex B: Data limitations

Timeliness

The population size for each parish is based on mid-2014 estimates (30th June 2014). Remaining analysis is based on Census 2011 data and hence captures the population characteristics as they were on 27th March 2011. The socio-demographic characteristics of the population could have changed between then and the time of writing of this report. Some areas, for example where there is a lot of newly built houses or significant student or migrant population will be more dynamic, hence changes over time may be more significant.

Coverage

Good geographical coverage has been achieved when matching statistical areas to most parish areas, mainly because both statistical area boundaries and parish boundary tend not to cut across main roads. More sparsely populated areas in Trafford were more difficult to match. Since extra area included or removed is mainly industrial, it is thought that population characteristics are not significantly affected. The reported overall population density for affected parishes is most likely an underestimate.

Data matching

A spatial join between parish areas and 'Population Weighted Centroids' was applied to determine Output Areas which fall within each parish boundary. This automated method assigned nearly 99 percent of all OAs in the deanery to parishes. A very small number (about 1 percent) was manually adjusted, to ensure good coverage and capture of the key population features.

Non- response

Like any survey, Census also faces issues with non-response. Due to ONS efforts, this is very low, at about 5% nationally.

Accuracy and correctness

The answers to Census questionnaire reflect respondents' perception and it is possible that some of the answers are incorrect, due to genuine mistakes or deception. Some of the respondents could also refuse to answer some of the questions. ONS has a methodology for checking responses for internal consistency and removes inconsistent or clearly incorrect entries. This in turn means that the base population for each characteristic may be slightly different.

Annex C: Data tables

Table 1: Number and selected characteristics of households, 2011

Parish ID	Parish name	Households					
		Total number	No access to car	Rented accommodation	One family	One person	Other
D001	Christ the King, Burnley	7,174	2,632	2,790	4,313	2,436	425
D002	Our Lady, St Hubert with St Wulstan, Great Harwood	4,788	1,178	1,349	2,959	1,623	206
D003	St Anne, Accrington	7,168	2,353	2,288	4,285	2,360	523
D004	St Charles, Rishton	2,912	719	852	1,860	919	133
D005	St James the Lees, Rawtenstall	6,424	1,219	1,647	4,206	1,854	364
D006	St John Southworth, Nelson	11,097	3,289	3,077	6,649	3,454	994
D007	St John the Baptist and St Philip the Apostle, Padiham	7,280	1,783	2,221	4,611	2,342	327
D008	St John the Baptist, Burnley	9,645	3,136	2,974	5,931	2,970	744
D009	St Joseph and St Peter, Newchurch	5,936	1,509	2,059	3,612	2,046	278
D010	St Joseph, Accrington	5,176	1,561	1,720	3,179	1,726	271
D011	St Joseph, Todmorden	6,821	1,964	2,142	4,045	2,350	426
D012	St Marie, Haslingden	7,320	1,487	1,947	4,657	2,244	419
D013	St Mary and St Anselm,	7,952	1,874	2,432	5,139	2,405	408
D014	St Mary Magdalene, Burnley	6,110	1,495	1,548	3,951	1,860	299
D015	St Mary of the Assumption	8,778	3,178	3,205	5,057	3,274	447
D016	St Mary, Clayton le Moors	4,034	857	1,115	2,667	1,170	197
D017	St Mary, Oswaldtwistle	9,415	2,887	3,224	5,796	3,036	583
D018	The Good Shepherd, Pendle	18,196	5,127	6,087	10,956	6,175	1,065
TOTAL		136,226	38,248	42,677	83,873	44,244	8,109

Table 2: Selected characteristics of one family and one person households, 2011

Parish ID	Parish name	Of one family households					One person households	
		One family	Married couples	Cohabiting couples	Lone parents	With dependant children (<i>married, cohabiting or lone parents</i>)	All members over 65	Over 65
D001	Christ the King, Burnley	4,313	1,946	857	1,014	1,940	496	849
D002	Our Lady, St Hubert with St Wulstan, Great Harwood	2,959	1,492	460	561	1,273	446	649
D003	St Anne, Accrington	4,285	2,213	676	912	2,078	484	827
D004	St Charles, Rishton	1,860	954	294	354	807	258	359
D005	St James the Lees, Rawtenstall	4,206	2,335	774	636	1,783	461	730
D006	St John Southworth, Nelson	6,649	3,791	841	1,140	3,090	877	1,382
D007	St John the Baptist and St Philip the Apostle, Padiham	4,611	2,352	819	843	1,942	597	922
D008	St John the Baptist, Burnley	5,931	3,281	820	1,178	2,768	652	1,126
D009	St Joseph and St Peter, Newchurch	3,612	1,739	758	711	1,556	404	754
D010	St Joseph, Accrington	3,179	1,486	597	672	1,378	424	698
D011	St Joseph, Todmorden	4,045	2,022	856	717	1,689	450	875
D012	St Marie, Haslingden	4,657	2,543	746	799	2,053	569	853
D013	St Mary and St Anselm, Whitworth	5,139	2,613	1,048	915	2,234	563	874
D014	St Mary Magdalene, Burnley	3,951	2,083	701	714	1,710	453	715
D015	St Mary of the Assumption	5,057	2,480	824	1,023	2,031	730	1,321
D016	St Mary, Clayton le Moors	2,667	1,438	487	495	1,251	247	383
D017	St Mary, Oswaldtwistle	5,796	2,835	1,046	1,231	2,671	684	1,212
D018	The Good Shepherd, Pendle	10,956	5,542	2,067	2,021	4,779	1,326	2,342
TOTAL		83,873	43,145	14,671	15,936	37,033	10,121	16,871

Table 3: Population estimates, 2014 and 2011 and religion, 2011

Parish ID	Parish name	Population estimates				Religion			
		2014	2011	2011, residents over 16	2011, working age population	Christian	Muslim	No religion	Other and not stated
D001	Christ the King, Burnley	16,337	16,470	13,260	12,085	10,873	212	4,148	1,237
D002	Our Lady, St Hubert with St Wulstan, Great Harwood	10,792	10,800	8,781	7,919	7,676	868	1,562	694
D003	St Anne, Accrington	17,407	17,529	13,540	12,452	9,477	4,058	2,859	1,135
D004	St Charles, Rishton	6,509	6,625	5,366	4,947	5,082	63	1,086	394
D005	St James the Lees, Rawtenstall	15,802	15,386	12,423	11,319	9,715	975	3,583	1,113
D006	St John Southworth, Nelson	29,715	29,283	22,494	20,480	12,110	11,254	3,920	1,999
D007	St John the Baptist and St Philip the Apostle, Padiham	16,506	16,346	13,287	11,980	11,920	93	3,237	1,096
D008	St John the Baptist, Burnley	24,559	24,318	18,742	17,120	12,391	6,892	3,439	1,596
D009	St Joseph and St Peter, Newchurch	13,563	13,271	10,766	9,857	8,410	89	3,749	1,023
D010	St Joseph, Accrington	12,048	11,831	9,525	8,490	8,267	499	2,314	751
D011	St Joseph, Todmorden	15,495	15,126	12,408	11,175	8,237	420	4,963	1,506
D012	St Marie, Haslingden	17,707	17,573	14,084	12,741	11,078	1,439	3,786	1,270
D013	St Mary and St Anselm, Whitworth	18,830	18,529	14,887	13,704	11,906	98	5,266	1,259
D014	St Mary Magdalene, Burnley	14,016	14,084	11,494	10,483	9,898	124	3,144	918
D015	St Mary of the Assumption	19,348	19,192	15,894	14,178	13,000	1,274	3,668	1,250
D016	St Mary, Clayton le Moors	9,445	9,659	7,660	7,071	7,131	181	1,768	579
D017	St Mary, Oswaldtwistle	22,150	22,351	17,574	16,019	14,384	2,632	3,874	1,461
D018	The Good Shepherd, Pendle	41,672	41,826	33,510	30,297	24,208	4,058	10,631	2,929
TOTAL		321,901	320,199	255,695	232,317	195,763	35,229	66,997	22,210