

Thematic maps for the deanery of St Chad

June 2016

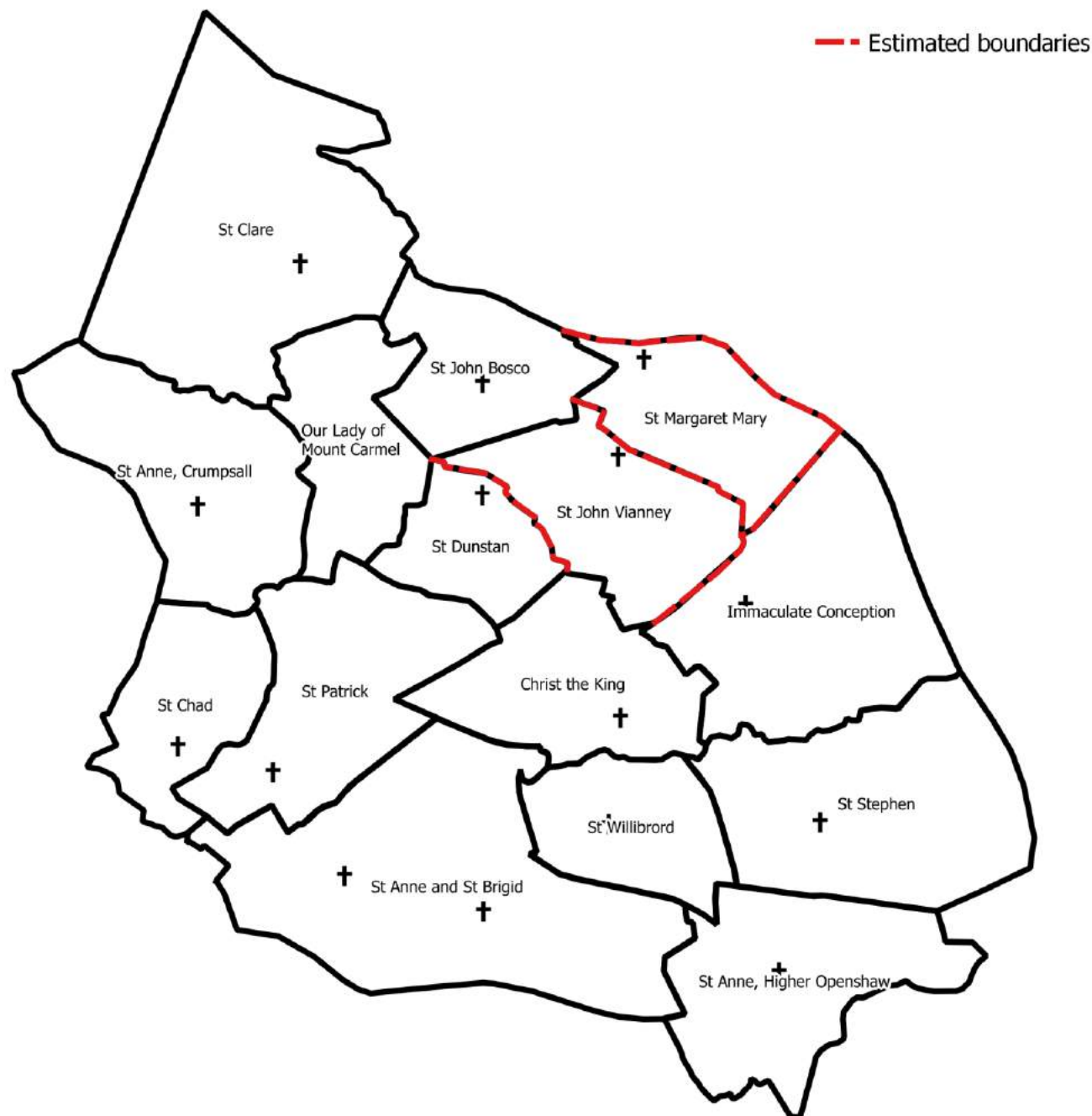
Output area coverage

This map shows the output areas used for each parish to produce the estimates. The match is generally good, however there are few instances where it was not possible to align Output Area and parish boundaries - this is mainly the case for more sparsely populated areas.



Location of churches

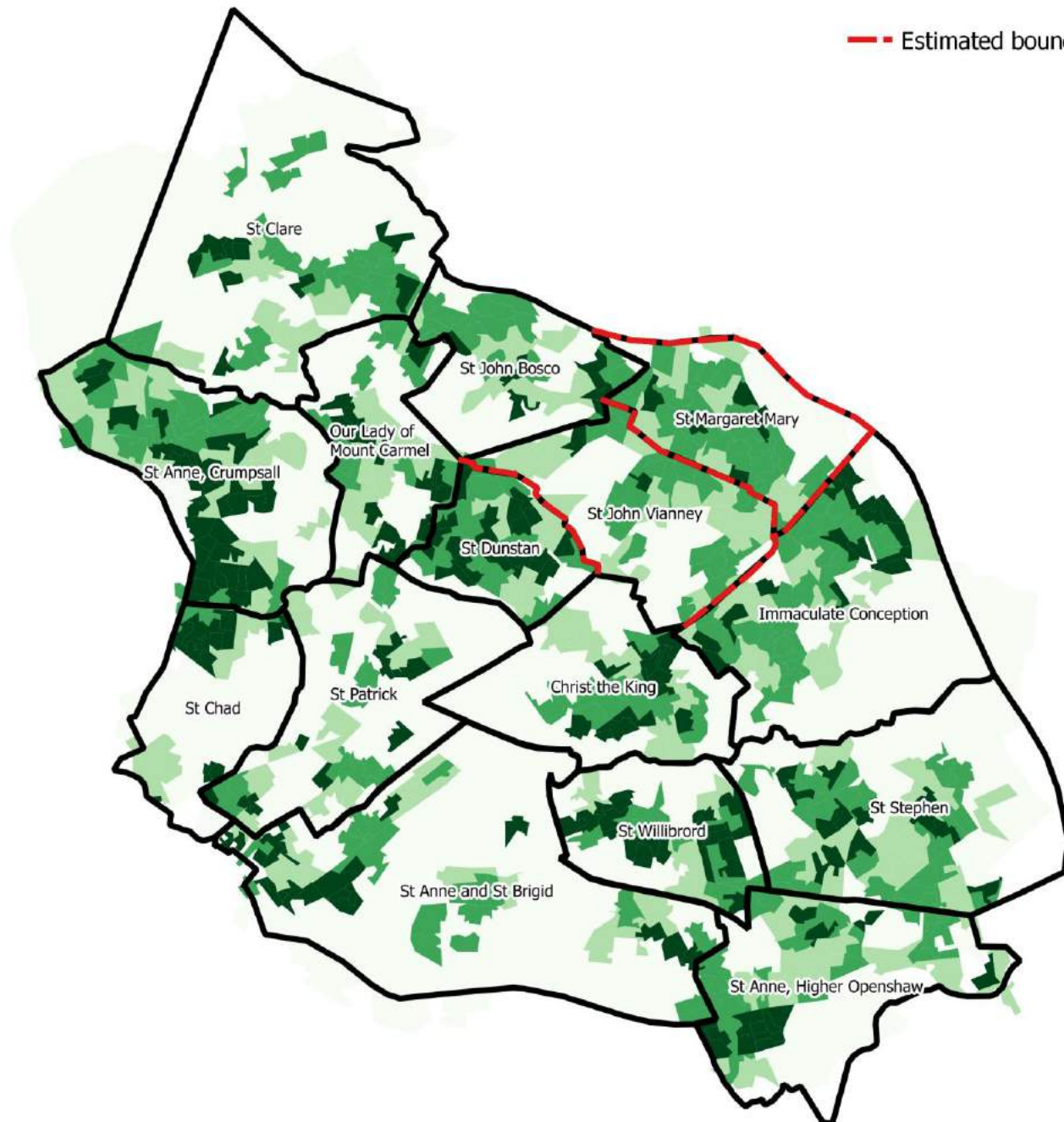
This map shows the location of churches in each parish in the deanery.



Population density, 2014

This map shows the population density, based on 2014 population estimate at the Output Area level. The density is expressed on number of persons per hectare.

--- Estimated boundaries



Legend

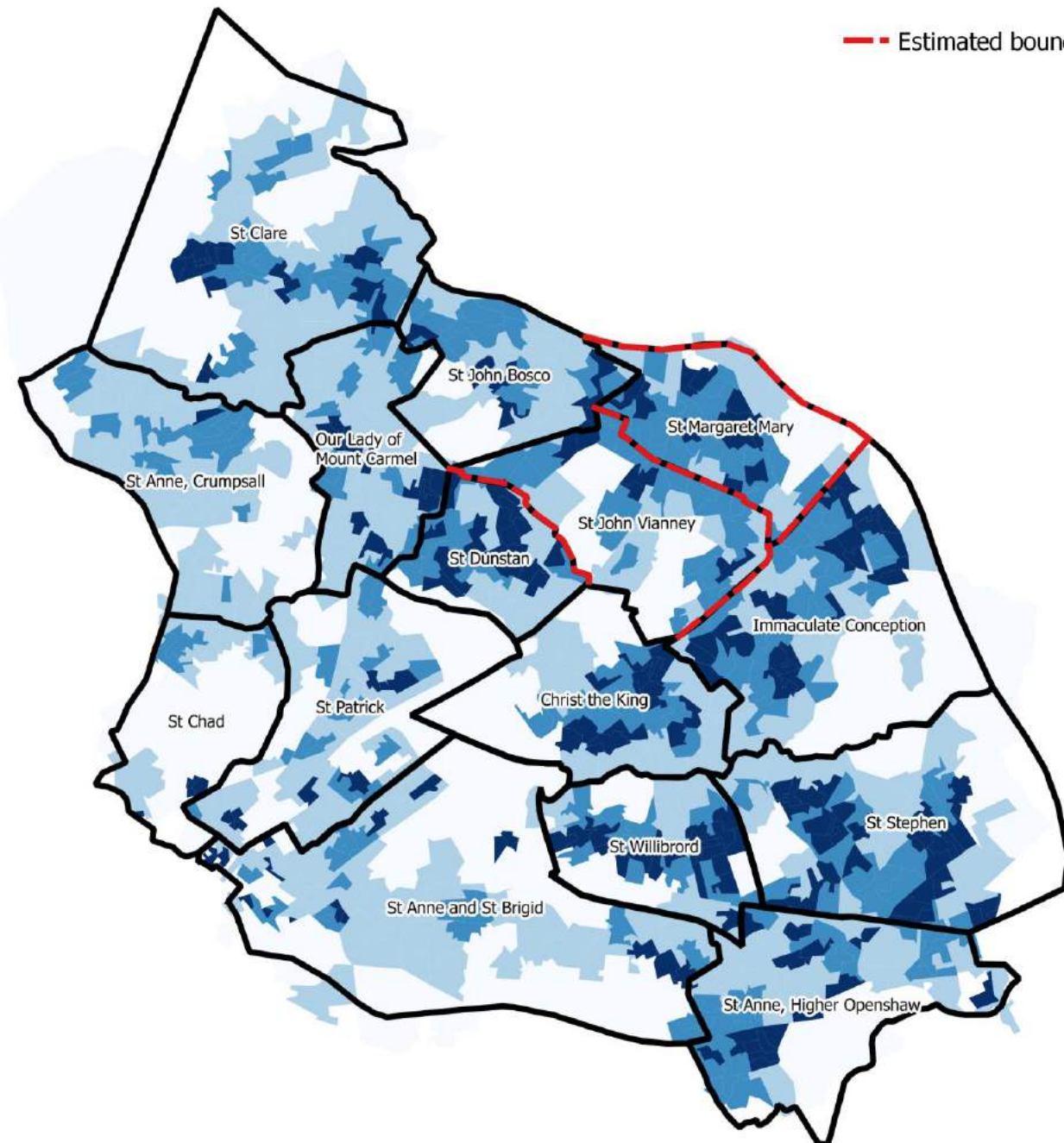
Population density
[persons per hectare]

- Up to 30
- 30 to 50
- 50 to 80
- Over 80

Christian population, 2011

This map shows the Christian population density, based on 2011 Census estimates at the Output Area level. The density is expressed on number of persons per hectare.

--- Estimated boundaries



Legend

Christians

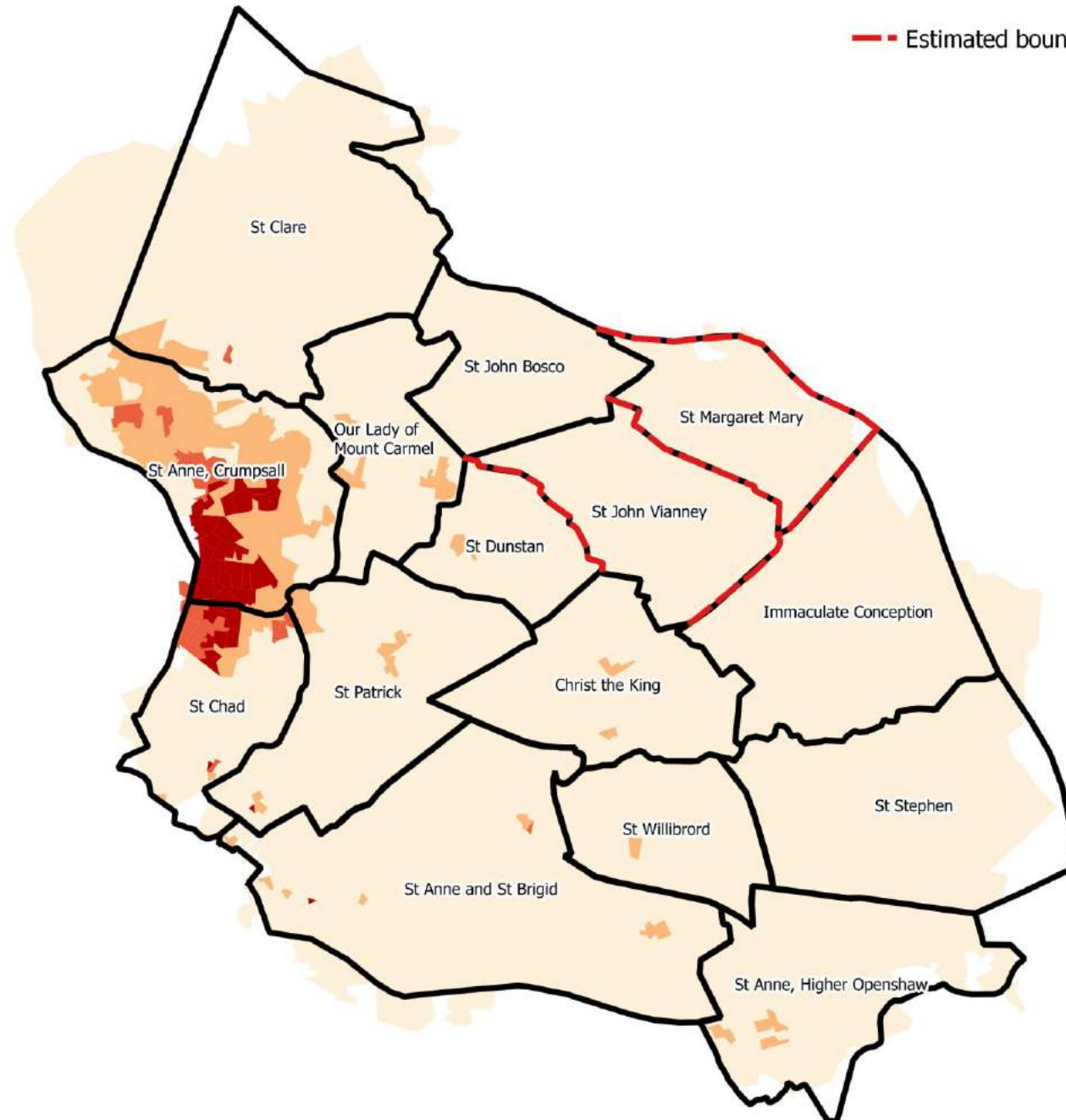
[persons per hectare]

- Up to 10
- 10 to 30
- 30 to 50
- Over 50

Muslim population, 2011

This map shows the Muslim population density, based on 2011 Census estimates at the Output Area level. The density is expressed on number of persons per hectare.

--- Estimated boundaries



Legend

Muslims

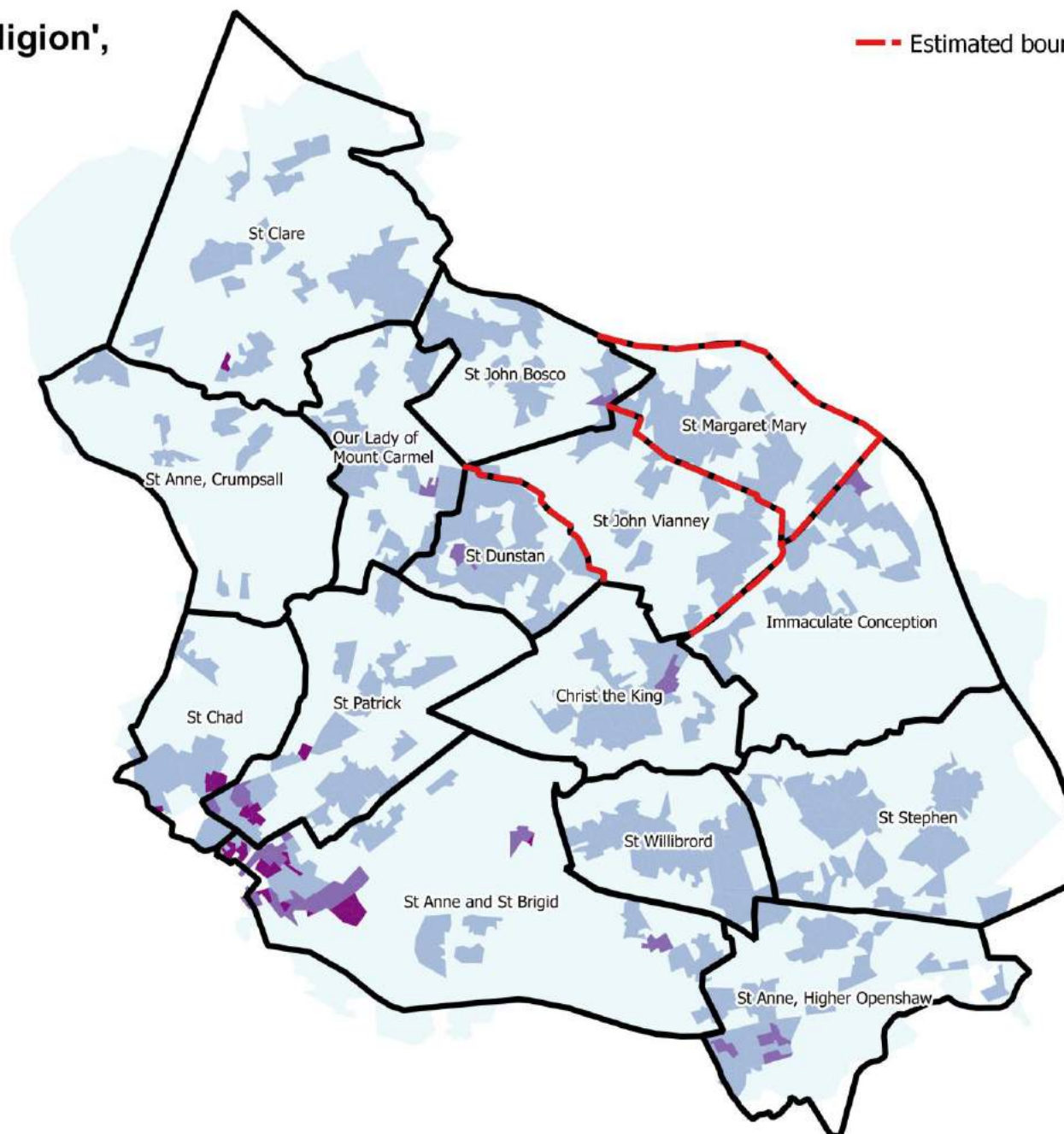
[persons per hectare]

- Up to 10
- 10 to 30
- 30 to 50
- Over 50

Population declaring 'no religion', 2011

This map shows the density of the population declaring 'no religion', based on 2011 Census estimates at the Output Area level. The density is expressed on number of persons per hectare.

— Estimated boundaries



Legend

Population declaring 'no religion'
[persons per hectare]

- Up to 10
- 10 to 30
- 30 to 50
- Over 50

Student population, 2011

This map shows the density of the student population, based on 2011 Census estimated at the Output Area level. The density is expressed as a number of persons per hectare.

— Estimated boundaries



Legend

Students

[persons per hectare]

- Up to 10
- 10 to 30
- 30 to 50
- Over 50