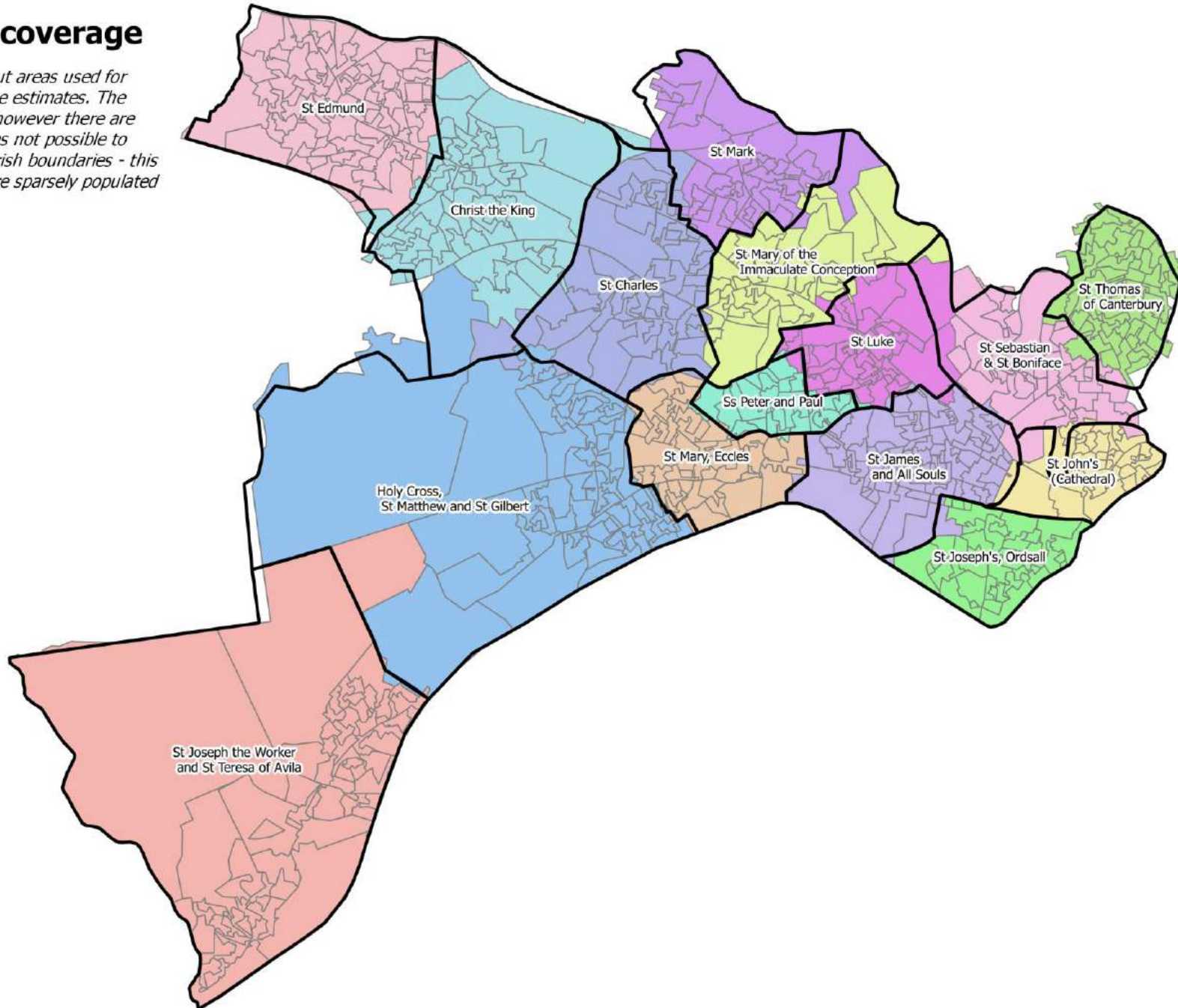


Thematic maps for the deanery of St John the Evangelist

June 2016

Output Area coverage

This map shows the output areas used for each parish to produce the estimates. The match is generally good, however there are few instances where it was not possible to align Output Area and parish boundaries - this is mainly the case for more sparsely populated areas.



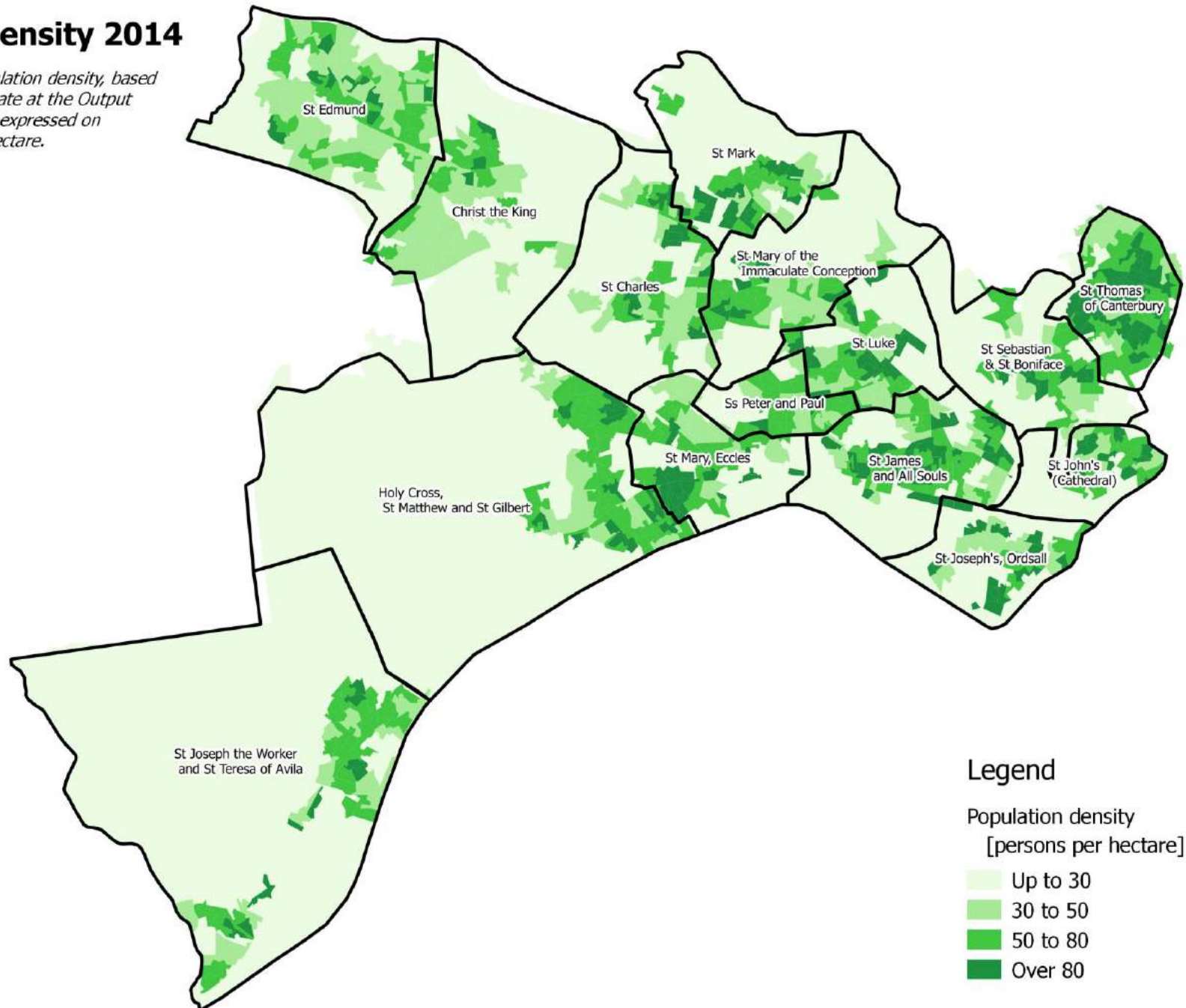
Location of churches

This map shows the location of churches in each parish in the deanery.



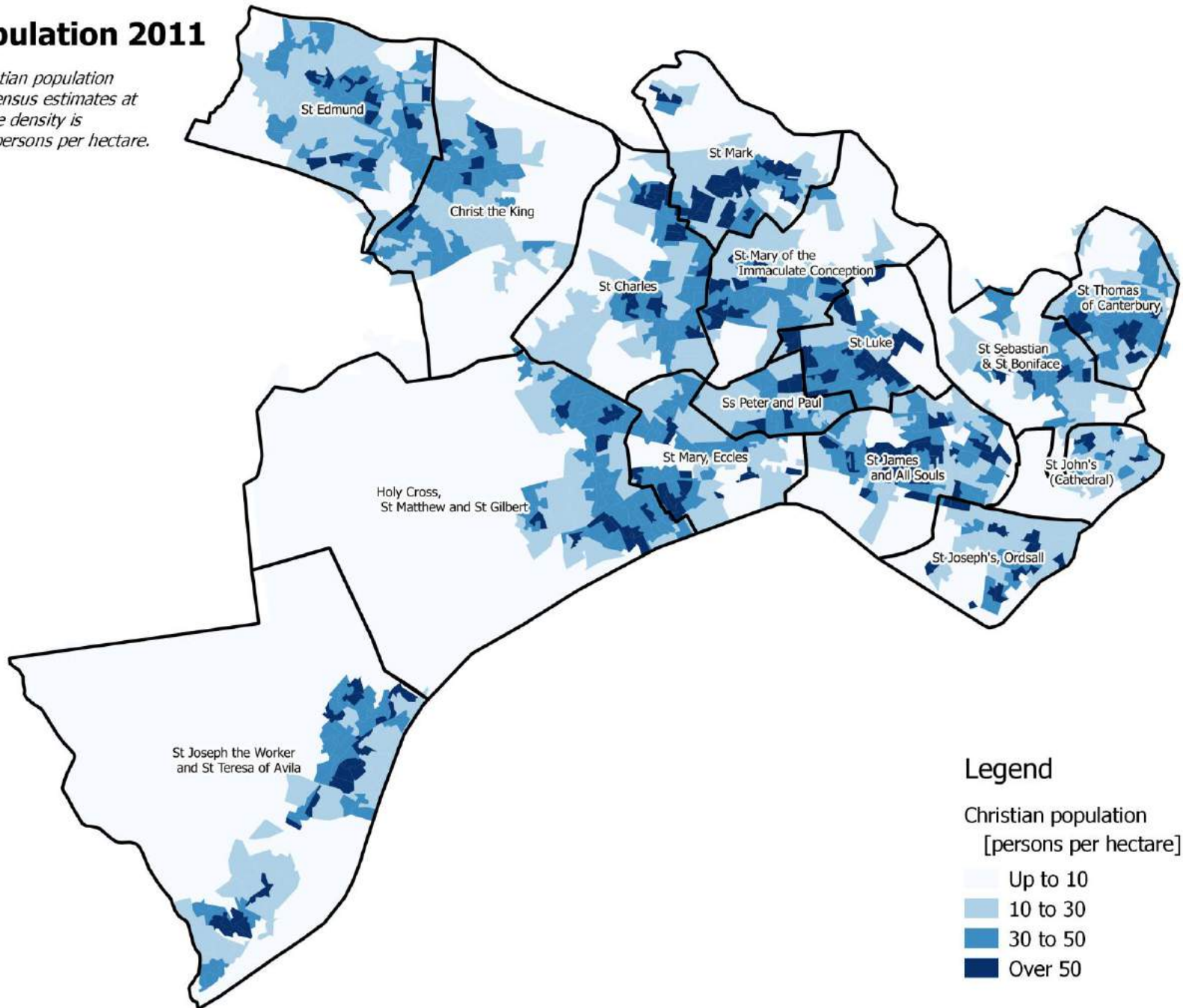
Population density 2014

This map shows the population density, based on 2014 population estimate at the Output Area level. The density is expressed on number of persons per hectare.



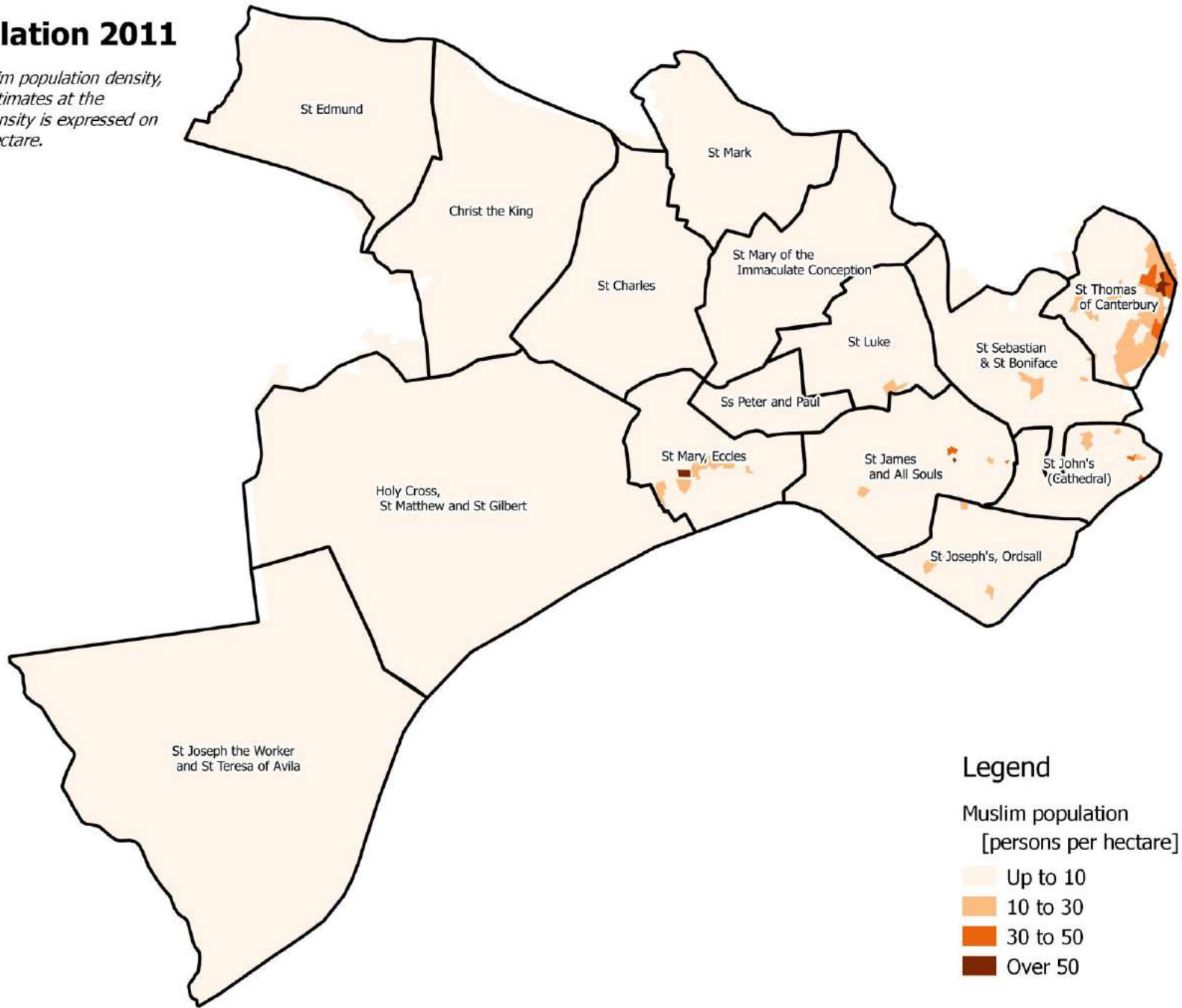
Christian population 2011

This map shows the Christian population density, based on 2011 Census estimates at the Output Area level. The density is expressed on number of persons per hectare.



Muslim population 2011

This map shows the Muslim population density, based on 2011 Census estimates at the Output Area level. The density is expressed on number of persons per hectare.

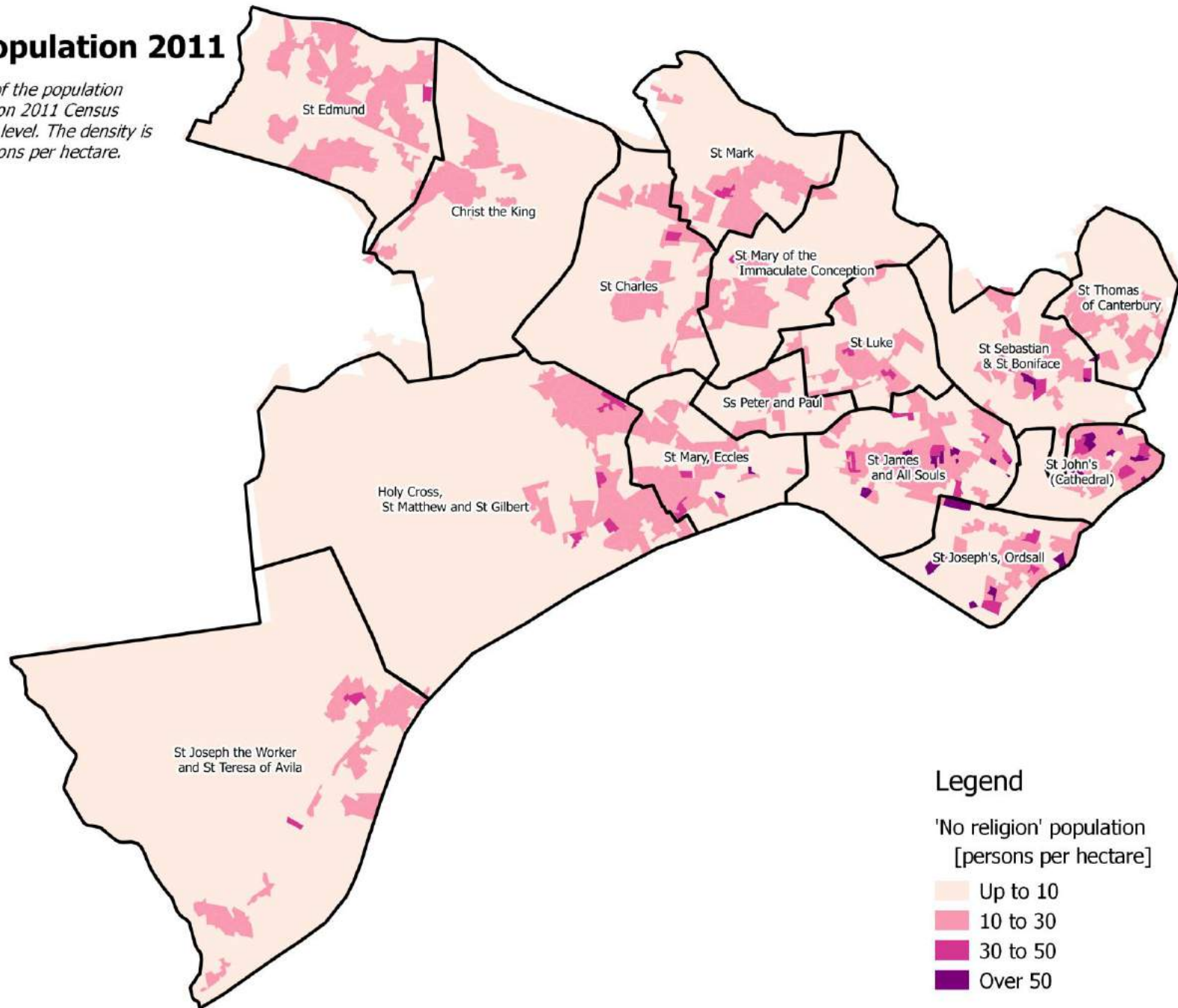


Legend

- Muslim population
[persons per hectare]
- Up to 10
 - 10 to 30
 - 30 to 50
 - Over 50

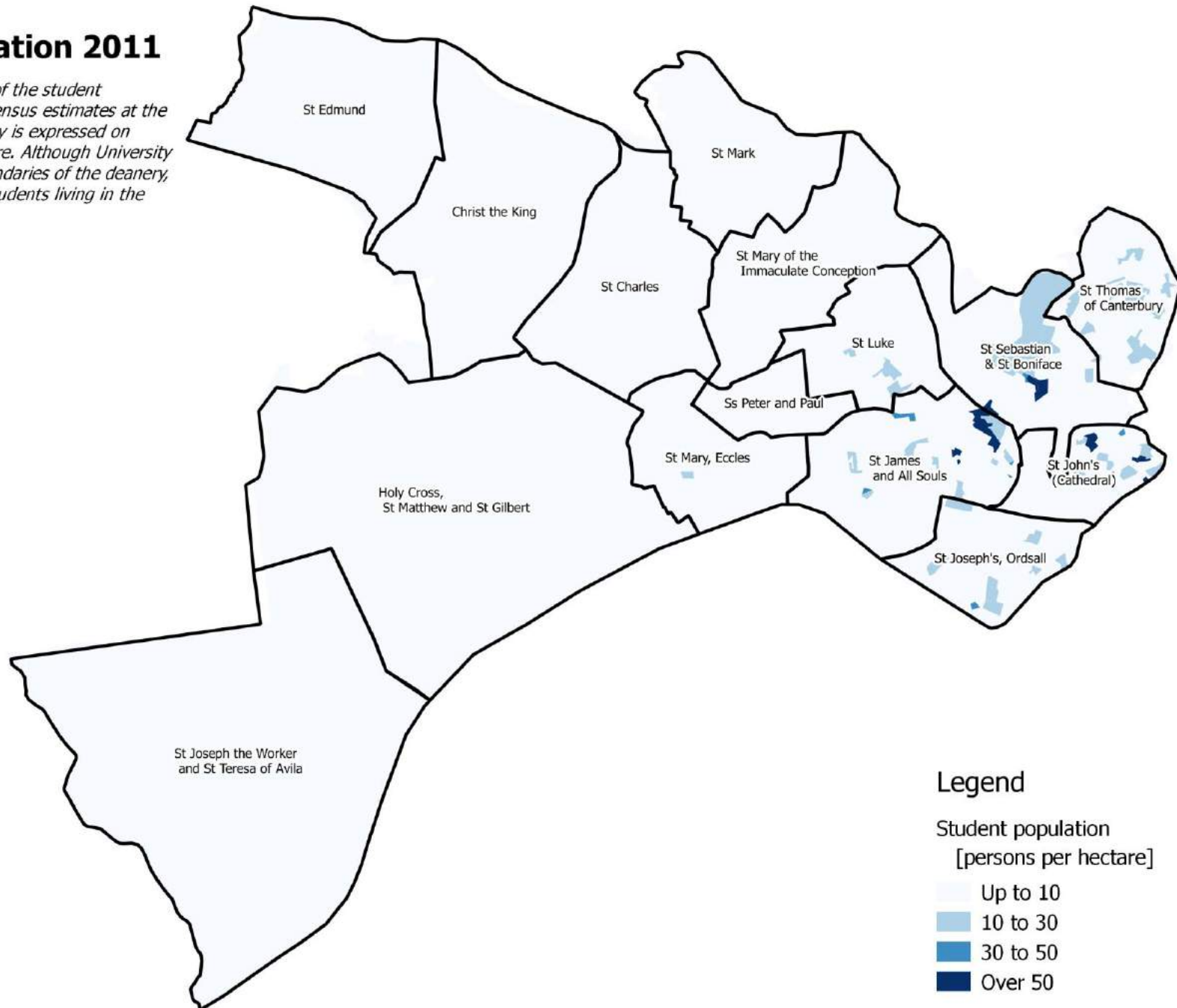
'No religion' population 2011

This map shows the density of the population declaring 'no religion', based on 2011 Census estimates at the Output Area level. The density is expressed on number of persons per hectare.



Student population 2011

This map shows the density of the student population, based on 2011 Census estimates at the Output Area level. The density is expressed on number of persons per hectare. Although University of Salford lies within the boundaries of the deanery, there aren't many full-time students living in the area.



Legend

Student population
[persons per hectare]

Up to 10

10 to 30

30 to 50

Over 50