

# **Deanery of St Ambrose Barlow**

**Population analysis at the parish level**

*February 2016*

# Table of contents

<b>Introduction</b>	<b>3</b>
<b>Parishes</b>	
<i>St Monica, Flixton</i>	4
<i>Our Lady and the English Martyrs, Urmston</i>	5
<i>St Hugh of Lincoln, Stretford</i>	6
<i>St Ann, Stretford</i>	7
<i>Our Lady and St Alphonsus, Old Trafford</i>	8
<i>Our Lady and St John, Chorlton-cum-Hardy</i>	9
<i>St Augustine, All Saints</i>	11
<i>English Martyrs, Whalley Range</i>	12
<i>St Bernadette, Withington</i>	13
<i>St Ambrose, Chorlton</i>	14
<i>St Edward, Rusholme</i>	15
<i>St Kentigern, Fallowfield</i>	16
<i>St Cuthbert, Withington</i>	17
<i>St Catherine of Sienna, Didsbury</i>	18
<i>St Joseph, Longsight</i>	19
<i>St Richard's, Longsight</i>	20
<i>St Mary's, Levenshulme</i>	21
<i>St Bernard, Burnage</i>	22
<i>Sacred Heart and St Francis of Assisi, Gorton</i>	23
<i>Holy Family, Denton</i>	24
<i>St Joseph, Reddish</i>	25
<i>St Mary, Heaton Norris</i>	26
<i>St Winifred, Heaton Mersey</i>	27
<i>St Mary and St John Fisher, Denton</i>	28
<b>Annex A: Maps</b>	<b>29</b>
<b>Annex B: Data limitations</b>	<b>29</b>
<b>Annex C: Data tables</b>	<b>37</b>

# Introduction

## Report structure

This report presents **summary statistics for each parish** in the deanery of St Ambrose Barlow, providing: population estimates, age profile, declared religion, occupation and family situation. The report is complemented by a series of seven maps showing location of church buildings, overall population density (2014), population density by religion (2011) and student population (Annex A). The data limitations are discussed in Annex B and the tables showing data for selected characteristics are shown in Annex C.

The parishes are ordered going from west to east and from north to south. Please note, due to the shape of the Output Area boundaries, it was not possible to provide estimates for St Anthony's of Padua parish in Trafford park.

## Deanery level overview

Overall, the deanery, consisting of **26 parishes**, covers the area of just over 100 square kilometers (10k hectares). The 2014 **population size** was estimated at 474k, a 2 percent increase since 2011. Majority of usual residents were **aged** between 18 and 35 (37%), followed by those aged 36 to 64. Only 11 percent of the population was aged over 65. Nearly a half of the population declared their **religion** as Christian, followed by a quarter declaring 'no religion' and 15 percent declaring a Muslim belief.

The **number of households** in the deanery was estimated at 187k, of which over a third did not have **access to a car** and nearly a half rented their accommodation. Just over a half of all households were occupied by a family, a third were one person households, with 10 percent being occupied by **a person over 65 living alone**. About 14 percent fell into other category, with 3 percent being fully occupied by full time students.

Parishes in the western and eastern parts of the deanery have a higher proportion of retired people (on average 14%) than those in the central part of the deanery, which tend to have a **sizeable student population** (please see the map in Annex A). The pattern of population declaring no religion, tends to follow that of the student population, suggesting that a relatively high proportion of students declares no religion.

It is also worth noting that the **between 2001 and 2011**, when the overall population size in the deanery increased by about 18 percent from 393k to 464k, the Christian population decreased by 9 percent (251k to 230k). At the same time both Muslim population and group declaring no religion increased significantly. Muslim population slightly more than doubled (34k to 69k) and the 'no religion group' increased by 85 percent (64k to 119k).

# St Monica, Flixton

*Parish Priest: Fr Bernard Charnock*

## Area & Population

- St Monica's parish covers the area of 582 hectares, and the average **population density** is 25 persons per hectare (based on matched Output Areas).
- The parish population size **is growing**. On 30<sup>th</sup> June 2014, the total number of usual residents was estimated at 14.2k. This is 2 percent (296 persons) higher than the Census 2011 estimate of 13.9k.
- Census 2011 estimated the total **number of households** in the parish at 5.8k.

## Demographics

- Most of the usual residents (42%) were aged between 36 and 64, followed by 19 percent aged between 18 and 35, with only 9 percent aged 7 years old or less.
- In the parish area, nearly three-quarters of the population declared their **religion as Christian**. Muslims accounted for 1 percent of the population, and a fifth of all residents declared 'no religion'. The **Christian population decreased** in line with the decrease observed between 2001 and 2011 at the deanery level.
- Most people (52%) in the parish are '**married**'.

## Economy

- Of the 2011 population, only a small proportion (1%) arrived in the UK between 2001 and 2011.
- Most of the people (66%) in the parish declared their main economic activity as **employed**, followed by 16 percent declaring being retired. The majority of those employed worked in the retail industry, mainly in professional roles. Just over a quarter of those in employment worked less than 30 hours per week.

## Families

- Of all households in the parish, 68 percent were occupied by a single **family**, 27 percent were one person households (including 14 percent of 'single, over 65') and 5 percent fell into 'other' category (mainly shared houses).
- Of the 'one family' households, 57 percent consisted of **married couples**, 13 percent were cohabiting and 15 percent were **lone parents**. Forty-two percent of the 'one family' households had dependent children, and 14 percent were families with all members aged over 65.
- In the parish area, 18 percent of households rented their accommodation, and 17 percent **did not** have access to car.

## Data coverage & accuracy

- Matched census areas covered 97 percent of the parish area.

# Our Lady and the English Martyrs, Urmston

*Parish Priest: Fr David Featherstone*

## Area & Population

- Our Lady and the English Martyrs parish covers the area of 589 hectares, and the average **population density** is 18 persons per hectare (based on matched Output Areas).
- The parish population size **remains fairly stable**. On 30<sup>th</sup> June 2014, the total number of usual residents was estimated at 19k. This is only 1 percent (236 persons) higher than the Census 2011 estimate of 18.7k.
- Census 2011 estimated the total **number of households** in the parish at 7.8k.

## Demographics

- Most of the usual residents (42%) were aged between 36 and 64, followed by 19 percent aged over 65, with only 9 percent aged 7 years old or less.
- In the parish area, 72 percent of the population declared their **religion as Christian**. Muslims accounted only for 1 percent of the population, and a fifth of all residents declared 'no religion'. The **Christian population decreased** in line with the decrease observed between 2001 and 2011 at the deanery level.
- Most people (51%) in the parish are '**married**'.

## Economy

- Of the 2011 population only 2 percent arrived in the UK between 2001 and 2011.
- Most of the people (67%) in the parish declared their main economic activity as '**employed**', followed by 16 percent declaring being retired. The majority of those employed worked in the health industry, mainly in professional roles. Nearly 30 percent of those in employment worked less than 30 hours per week.

## Families

- Of all households in the parish, 65 percent were occupied by a single **family**, 30 percent were one person households (including 14 percent of 'single, over 65') and 5 percent fell into 'other' category (mainly shared houses).
- Of the 'one family' households, 57 percent consisted of **married couples**, 13 percent were cohabiting and 15 percent were **lone parents**. Just over 40 percent of the 'one family' households had dependent children, and 14 percent were families with all members aged over 65.
- In the parish area, 20 percent of households rented their accommodation, and 19 percent **did not** have access to car.

## Data coverage & accuracy

- Matched census areas covered 180 percent of the parish area, mainly due to inclusion of industrial areas in St Hugh of Lincoln and St Anthony of Padua parishes. This is due to Output Area boundaries covering large patches of sparsely populated areas.

# St Hugh of Lincoln, Stretford

*Parish Priest: Fr Michael Cleary*

## Area & Population

- St Hugh's of Lincoln parish covers the area of 688 hectares, and the average **population density** is 28 persons per hectare (based on matched Output Areas).
- The parish population size **is growing**. On 30<sup>th</sup> June 2014, the total number of usual residents was estimated at 16.7k. This is 2 percent (328 persons) higher than the Census 2011 estimate of 16.3k.
- Census 2011 estimated the total **number of households** in the parish at 6.8k.

## Demographics

- Most of the usual residents (40%) were aged between 36 and 64, followed by 21 percent aged between 18 and 35, with only 10 percent aged 7 years old or less.
- In the parish area, two-thirds of the population declared their **religion as Christian**. Muslims accounted for 4 percent of the population, and a fifth of all residents declared 'no religion'. The **Christian population decreased** in line with the decrease observed between 2001 and 2011 at the deanery level.
- Most people (45%) in the parish are '**married**'.

## Economy

- Of the 2011 population only 3 percent arrived in the UK between 2001 and 2011.
- Most of the people (65%) in the parish declared their main economic activity as '**employed**', followed by 13 percent declaring being retired. The majority of those employed worked in the retail industry, mainly in administrative roles. Just over a quarter of those in employment worked less than 30 hours per week.

## Families

- Of all households in the parish, 65 percent were occupied by a single **family**, 29 percent were one person households (including 12 percent of 'single, over 65') and 6 percent fell into 'other' category (mainly shared houses).
- Of the 'one family' households, a half consisted of **married couples**, 16 percent were cohabiting and 23 percent were **lone parents**. Forty-six percent of the 'one family' households had dependent children, and 10 percent were families with all members aged over 65.
- In the parish area, 30 percent of households rented their accommodation, and 24 percent **did not** have access to car.

## Data coverage & accuracy

- Matched census areas covered 86 percent of the parish area. Unmatched area is predominantly sparsely populated industrial area.

# St Ann, Stretford

*Parish Priest: Fr John P Hitchen & Fr Patrick Greasley*

## Area & Population

- St Ann's parish covers the area of 647 hectares, and the average **population density** is 26 persons per hectare (based on matched Output Areas).
- The parish population size **is growing**. On 30<sup>th</sup> June 2014, the total number of usual residents was estimated at 21.7k. This is 2 percent (447 persons) higher than the Census 2011 estimate of 21.3k.
- Census 2011 estimated the total **number of households** in the parish at 9k.

## Demographics

- Most of the usual residents (38%) were aged between 36 and 64, followed by 26 percent aged between 18 and 35, with only 11 percent aged 7 years old or less.
- In the parish area, 59 percent of the population declared their **religion as Christian**. Muslims accounted for 9 percent of the population, and 22 percent of all residents declared 'no religion'. The **Christian population decreased** in line with the decrease observed between 2001 and 2011 at the deanery level.
- Most people (42%) in the parish are '**single, never married**'.

## Economy

- Of the 2011 population 6 percent arrived between 2001 and 2011.
- Most of the people (65%) in the parish declared their main economic activity as '**employed**', followed by 10 percent declaring being retired. The majority of those employed worked in the retail industry, mainly in professional roles. Twenty-seven percent of those in employment worked less than 30 hours per week.

## Families

- Of all households in the parish, 57 percent were occupied by a single **family**, a third were one person households (including 12 percent of 'single, over 65') and 9 percent fell into 'other' category (mainly shared houses).
- Of the 'one family' households, nearly a half consisted of **married couples**, 18 percent were cohabiting and 26 percent were **lone parents**. Forty-eight percent of the 'one family' households had dependent children, and 8 percent were families with all members aged over 65.
- In the parish area, 39 percent of households rented their accommodation, and 33 percent **did not** have access to car.

## Data coverage & accuracy

- Matched census areas covered 130 percent of the parish area. Industrial areas partly covering St Anthony of Padua parish were included.

# Our Lady and St Alphonsus, Old Trafford

*Parish Priest: Fr Patrick Deegan*

## Area & Population

- Our Lady and St Alphonsus' parish covers the area of 386 hectares, and the average **population density** is 63 persons per hectare (based on matched Output Areas).
- The parish population size **is growing**. On 30<sup>th</sup> June 2014, the total number of usual residents was estimated at 24.3k. This is 3 percent (624 persons) higher than the Census 2011 estimate of 23.7k.
- Census 2011 estimated the total **number of households** in the parish at 9.3k.

## Demographics

- A third of the residents was **aged** between 18 and 35, and just under a third was aged between 36 and 64, with only 9 percent aged over 65.
- In the parish area, a just over a third of the population declared their **religion as Christian**. Muslims accounted for the same proportion as Christians, and 17 percent of all residents declared 'no religion'. The **Christian population decreased** in line with the decrease observed between 2001 and 2011 at the deanery level.
- Most people (48%) in the parish are '**single, never married**'.

## Economy

- Of the 2011 population 4 percent **arrived** in the UK in the two years before the census, and 19 percent between 2001 and 2011.
- A half of the people (50%) in the parish declared their main economic activity as '**employed**', followed by 15 percent declaring being a student. The majority of those employed worked in the retail industry, mainly in professional roles. Just over a third of those in employment worked less than 30 hours per week.

## Families

- Of all households in the parish, nearly a half were occupied by a single **family**, 35 percent were one person households (including 9 percent of 'single, over 65') and 16 percent fell into 'other' category (mainly shared houses).
- Of the 'one family' households, 45 percent consisted of **married couples**, 14 percent were cohabiting and 36 percent were **lone parents**. Fifty-eight percent of the 'one family' households had dependent children, and 5 percent were families with all members aged over 65.
- In the parish area, 64 percent of households rented their accommodation, and 48 percent **did not** have access to car.

## Data coverage & accuracy

- Matched census areas covered 100 percent of the parish area.



# Our Lady and St John, Chorlton-cum-Hardy

*Parish Priest: Fr Patrick McMahon*

## Area & Population

- Our Lady's and St John's parish covers the area of 434 hectares, and the average **population density** is 53 persons per hectare (based on matched Output Areas).
- The parish population size **remains fairly stable**. On 30<sup>th</sup> June 2014, the total number of usual residents was estimated at 24.1k. This is only 1 percent (341 persons) lower than the Census 2011 estimate of 24.5k.
- Census 2011 estimated the total **number of households** in the parish at 10.2k.

## Demographics

- Most of the usual residents (36%) were aged between 36 and 64, followed by 34 percent aged between 18 and 35, with only 10 percent aged 7 years old or less.
- In the parish area, 39 percent of the population declared their **religion as Christian**. Muslims accounted for 14 percent of the population, and 35 percent of all residents declared 'no religion'. The **Christian population decreased** in line with the decrease observed between 2001 and 2011 at the deanery level.
- Most people (51%) in the parish are '**single, never married**'.

## Economy

- Of the 2011 population only 7 percent arrived in the UK between 2001 and 2011.
- Most of the people (71%) in the parish declared their main economic activity as '**employed**', followed by 9 percent declaring being a student. The majority of those employed worked in the education industry, mainly in professional roles. Just under a quarter of those in employment worked less than 30 hours per week.

## Families

- Of all households in the parish, 53 percent were occupied by a single **family**, 31 percent were one person households (including 9 percent of 'single, over 65') and 16 percent fell into 'other' category (mainly shared houses).
- Of the 'one family' households, a half consisted of **married couples**, 29 percent were cohabiting and 14 percent were **lone parents**. Forty-four percent of the 'one family' households had dependent children, and 7 percent were families with all members aged over 65.
- In the parish area, 39 percent of households rented their accommodation, and 25 percent **did not** have access to car.

## Data coverage & accuracy

- Matched census areas covered 104 percent of the parish area.

# St Mary the Hidden Gem, Manchester

*Parish Priest: Msgr Anthony Kay & Fr Nathan Horne*

## Area & Population

- St Mary's parish covers the area of 150 hectares, and the average **population density** is 41 persons per hectare (based on matched Output Areas).
- The parish population size **is growing**. On 30<sup>th</sup> June 2014, the total number of usual residents was estimated at 6.2k. This is 9 percent (494 persons) higher than the Census 2011 estimate of 5.7k.
- Census 2011 estimated the total **number of households** in the parish at 3.4k.

## Demographics

- Most of the usual residents (73%) were aged between 18 and 35, followed by 20 percent aged between 36 and 64, with only 2 percent aged over 65.
- In the parish area, 37 percent of the population declared their **religion as Christian**. Muslims accounted for 9 percent of the population, and 42 percent of all residents declared 'no religion'. The **Christian population increased significantly** (more than doubled), despite the decrease observed between 2001 and 2011 at the deanery level.
- Most people (79%) in the parish are '**single, never married**'.

## Economy

- Of the 2011 population 13 percent **arrived** in the UK in the two years before the census, and 29 percent between 2001 and 2011.
- Most of the people (66%) in the parish declared their main economic activity as '**employed**', followed by 28 percent declaring being a student. The majority of those employed worked in the professional services industry, mainly in professional roles. Twelve percent of those in employment worked less than 30 hours per week.

## Families

- Of all households in the parish, 27 percent were occupied by a single **family**, 48 percent were one person households (including only 1 percent of 'single, over 65') and 25 percent fell into 'other' category (mainly shared houses).
- Of the 'one family' households, 32 percent consisted of **married couples**, 64 percent were cohabiting and 4 percent were **lone parents**. Eleven percent of the 'one family' households had dependent children, and 1 percent were families with all members aged over 65.
- In the parish area, 68 percent of households rented their accommodation, and 52 percent **did not** have access to car.

## Data coverage & accuracy

- Matched census areas covered 100 percent of the parish area.

# St Augustine, All Saints

*Parish Priest: Fr David Lannon*

## Area & Population

- St Augustine's parish covers the area of 408 hectares, and the average **population density** is 81 persons per hectare (based on matched Output Areas).
- The parish population size **is growing**. On 30<sup>th</sup> June 2014, the total number of usual residents was estimated at 35.7k. This is 9 percent (2,800 persons) higher than the Census 2011 estimate of 32.9k.
- Census 2011 estimated the total **number of households** in the parish at 12.6k.

## Demographics

- Most of the usual residents (71%) were aged between 18 and 35, followed by 17 percent aged between 36 and 64, with only 3 percent aged over 65.
- In the parish area, 37 percent of the population declared their **religion as Christian**. Muslims accounted for 12 percent of the population, and 38 percent of all residents declared 'no religion'. The **Christian population increased significantly**, despite the decrease observed between 2001 and 2011 at the deanery level.
- Most people (81%) in the parish are '**single, never married**'.

## Economy

- Of the 2011 population 17 percent **arrived** in the UK in the two years before the census, and 32 percent between 2001 and 2011.
- Most of the people (51%) in the parish declared their main economic activity as '**student**', followed by 37 percent declaring being in employment. The majority of those employed worked in the retail industry, mainly in professional roles. A third of those in employment worked less than 30 hours per week.

## Families

- Of all households in the parish, a third were occupied by a single **family**, 44 percent were one person households (including 5 percent of 'single, over 65') and nearly a quarter fell into 'other' category (mainly shared houses).
- Of the 'one family' households, a third consisted of **married couples**, 42 percent were cohabiting and 23 percent were **lone parents**. Thirty-seven percent of the 'one family' households had dependent children, and 2 percent were families with all members aged over 65.
- In the parish area, 78 percent of households rented their accommodation, and 59 percent **did not** have access to car.

## Data coverage & accuracy

- Matched census areas covered 109 percent of the parish area.

# English Martyrs, Whalley Range

*Parish Priest: Fr Geoffrey Marlor*

## Area & Population

- English Martyrs' parish covers the area of 268 hectares, and the average **population density** is 64 persons per hectare (based on matched Output Areas).
- The parish population size **remains fairly stable**. On 30<sup>th</sup> June 2014, the total number of usual residents was estimated at 16.5k. This is nearly the same as Census 2011 estimate.
- Census 2011 estimated the total **number of households** in the parish at 6.5k.

## Demographics

- Most of the usual residents (37%) were aged between 18 and 35, followed by 32 percent aged between 36 and 64, with only 8 percent aged over 65.
- In the parish area, a third of the population declared their **religion as Christian**. Muslims accounted also for a third of the population, and a quarter of all residents declared 'no religion'. The **Christian population size remained constant**, despite the decrease observed between 2001 and 2011 at the deanery level.
- Most people (53%) in the parish are '**single, never married**'.

## Economy

- Of the 2011 population 4 percent **arrived** in the UK in the two years before the census, and 17 percent between 2001 and 2011. The stable overall population size suggests similar numbers of people moving in as moving out of the parish area.
- Most of the people (59%) in the parish declared their main economic activity as **employed**, followed by 15 percent who declared being a student. The majority of those employed worked in the health industry, mainly in professional roles. Nearly 30 percent of those in employment worked less than 30 hours per week.

## Families

- Of all households in the parish, 46 percent were occupied by a single **family**, 37 percent were one person households (including 6 percent of 'single, over 65') and 17 percent fell into 'other' category (mainly shared houses).
- Of the 'one family' households, 49 percent consisted of **married couples**, 23 percent were cohabiting and the same proportion was occupied **lone parent** families. Just over a half of one family household had dependent children, and 5 percent were families with all members aged over 65.
- In the parish area, 59 percent of households rented their accommodation, and 37 percent **did not** have access to car.

## Data coverage & accuracy

- Matched census areas covered 96 percent of the parish area.

# St Bernadette, Withington

*Parish Priest: Fr J Colin Wright*

## Area & Population

- St Bernadette's parish covers the area of 185 hectares, and the average **population density** is 44 persons per hectare (based on matched Output Areas).
- The parish population size **is growing**. On 30<sup>th</sup> June 2014, the total number of usual residents was estimated at 8.2k. This is 4 percent (333 persons) higher than the Census 2011 estimate of 7.9k.
- Census 2011 estimated the total **number of households** in the parish at 3.6k.

## Demographics

- Most of the usual residents (40%) were aged between 18 and 35, followed by 29 percent aged between 36 and 64, with only 10 percent aged over 65.
- In the parish area, nearly a half of the population declared their **religion as Christian**. Muslims accounted for 11 percent of the population, and 29 percent of all residents declared 'no religion'. The **Christian population increased slightly**, despite the decrease observed between 2001 and 2011 at the deanery level.
- Most people (57%) in the parish are '**single, never married**'.

## Economy

- Of the 2011 population 2 percent **arrived** in the UK in the two years before the census, and 11 percent between 2001 and 2011.
- Most of the people (64%) in the parish declared their main economic activity as '**employed**', followed by 11 percent who declared being a student. The majority of those employed worked in the health industry, mainly in professional roles. Twenty-two percent of those in employment worked less than 30 hours per week.

## Families

- Of all households in the parish, a half were occupied by a single **family**, 36 percent were one person households (including 9 percent of 'single, over 65') and 14 percent fell into 'other' category (mainly shared houses).
- Of the 'one family' households, 36 percent consisted of **married couples**, 28 percent were cohabiting and 32 percent were **lone parents**. Just under a half of the 'one family' households had dependent children, and 5 percent were families with all members aged over 65.
- In the parish area, 59 percent of households rented their accommodation, and 32 percent **did not** have access to car.

## Data coverage & accuracy

- Matched census areas covered 101 percent of the parish area.

# St Ambrose, Chorlton

*Parish Priest: Fr J.P. Earley*

## Area & Population

- St Ambrose's parish covers the area of 328 hectares, and the average **population density** is 29 persons per hectare (based on matched Output Areas).
- The parish population size **remains fairly stable**. On 30<sup>th</sup> June 2014, the total number of usual residents was estimated at 9.3k. This is only 1 percent (81 persons) lower than the Census 2011 estimate of 9.4k.
- Census 2011 estimated the total **number of households** in the parish at 4.2k.

## Demographics

- Most of the usual residents (35%) were aged between 18 and 35, followed by 33 percent aged between 36 and 64, with only 10 percent aged 7 years old or less.
- In the parish area, 49 percent of the population declared their **religion as Christian**. Muslims accounted for 9 percent of the population, and just under a third percent of all residents declared 'no religion'. The **Christian population decreased** in line with the decrease observed between 2001 and 2011 at the deanery level.
- Most people (54%) in the parish are '**single, never married**'.

## Economy

- Of the 2011 population 2 percent **arrived** in the UK in the two years before the census, and 8 percent between 2001 and 2011.
- Most of the people (65%) in the parish declared their main economic activity as '**employed**', followed by 9 percent who declared being a student. The majority of those employed worked in the health industry, mainly in professional roles. Twenty-two percent of those in employment worked less than 30 hours per week.

## Families

- Of all households in the parish, just over a half were occupied by a single **family**, 36 percent were one person households (including 10 percent of 'single, over 65') and 13 percent fell into 'other' category (mainly shared houses).
- Of the 'one family' households, 40 percent consisted of **married couples**, 26 percent were cohabiting and 28 percent were **lone parents**. Forty-eight percent of the 'one family' households had dependent children, and 6 percent were families with all members aged over 65.
- In the parish area, 52 percent of households rented their accommodation, and 32 percent **did not** have access to car.

## Data coverage & accuracy

- Matched census areas covered 98 percent of the parish area.

# St Edward, Rusholme

*Parish Priest: Fr Thomas A Connolly & Fr George Joseph*

## Area & Population

- St Edward's parish covers the area of 188 hectares, and the average **population density** is 93 persons per hectare (based on matched Output Areas).
- The parish population size **remains fairly stable**. On 30<sup>th</sup> June 2014, the total number of usual residents was estimated at 16.7k. This was the same as the Census 2011 estimate.
- Census 2011 estimated the total **number of households** in the parish at 5.6k.

## Demographics

- Most of the usual residents (62%) were aged between 18 and 35, followed by 17 percent aged between 36 and 64, with only 6 percent aged over 65.
- In the parish area, a third of the population declared their **religion as Christian**. Muslims accounted for 29 percent of the population, and 26 percent of all residents declared 'no religion'. The **Christian population decreased** in line with the decrease observed between 2001 and 2011 at the deanery level.
- Most people (72%) in the parish are '**single, never married**'.

## Economy

- Of the 2011 population 14 percent **arrived** in the UK in the two years before the census, and a third between 2001 and 2011.
- Most of the people (53%) in the parish declared their main economic activity as '**student**', followed by 28 percent declaring being in employment. The majority of those employed worked in the retail industry, mainly in elementary roles. Nearly a half of those in employment worked less than 30 hours per week.

## Families

- Of all households in the parish, 33 percent were occupied by a single **family**, 36 percent were one person households (including 8 percent of 'single, over 65') and 31 percent fell into 'other' category (mainly shared houses).
- Of the 'one family' households, 48 percent consisted of **married couples**, 17 percent were cohabiting and 31 percent were **lone parents**. Fifty-six percent of the 'one family' households had dependent children, and 4 percent were families with all members aged over 65.
- In the parish area, 76 percent of households rented their accommodation, and 62 percent **did not** have access to car.

## Data coverage & accuracy

- Matched census areas covered 95 percent of the parish area.

# St Kentigern, Fallowfield

*Parish Priest: Fr Thomas A Connolly, Fr George Cheeramkuzhy & Fr Sean O'Brien*

## Area & Population

- St Kentigern's parish covers the area of 270 hectares, and the average **population density** is 80 persons per hectare (based on matched Output Areas).
- The parish population size **is growing**. On 30<sup>th</sup> June 2014, the total number of usual residents was estimated at 22.8k. This is 4 percent (883 persons) higher than the Census 2011 estimate of 22k.
- Census 2011 estimated the total **number of households** in the parish at 6.6k.

## Demographics

- Most of the usual residents (62%) were aged between 18 and 35, followed by 18 percent aged between 36 and 64, with only 6 percent aged over 65.
- In the parish area, 43 percent of the population declared their **religion as Christian**. Muslims accounted for 16 percent of the population, and nearly a quarter of all residents declared 'no religion'. The **Christian population size remained constant**, despite the decrease observed between 2001 and 2011 at the deanery level.
- Most people (74%) in the parish are '**single, never married**'.

## Economy

- Of the 2011 population 5 percent **arrived** in the UK in the two years before the census, and 14 percent between 2001 and 2011.
- Most of the people (56%) in the parish declared their main economic activity as '**student**', followed by 27 percent declaring being in employment. The majority of those employed worked in the retail industry, mainly in elementary roles. A half of those in employment worked less than 30 hours per week.

## Families

- Of all households in the parish, 41 percent were occupied by a single **family**, 26 percent were one person households (including 8 percent of 'single, over 65') and 34 percent fell into 'other' category (mainly shared houses).
- Of the 'one family' households, 44 percent consisted of **married couples**, 16 percent were cohabiting and 34 percent were **lone parents**. Fifty-four percent of the 'one family' households had dependent children, and 6 percent were families with all members aged over 65.
- In the parish area, 69 percent of households rented their accommodation, and 47 percent **did not** have access to car.

## Data coverage & accuracy

- Matched census areas covered 105 percent of the parish area.



# St Cuthbert, Withington

*Parish Priest: Fr Brendan Curley*

## Area & Population

- St Cuthbert's parish covers the area of 335 hectares, and the average **population density** is 79 persons per hectare (based on matched Output Areas).
- The parish population size **remains fairly stable**. On 30<sup>th</sup> June 2014, the total number of usual residents was estimated at 27.7k. This is only 1 percent (263 persons) higher than the Census 2011 estimate of 27.4k.
- Census 2011 estimated the total **number of households** in the parish at 10.9k.

## Demographics

- Most of the usual residents (58%) were aged between 18 and 35, followed by 22 percent aged between 36 and 64, with only 6 percent aged 7 years old or less.
- In the parish area, 41 percent of the population declared their **religion as Christian**. Muslims accounted for 9 percent of the population, and 38 percent of all residents declared 'no religion'. The **Christian population decreased** in line with the decrease observed between 2001 and 2011 at the deanery level.
- Most people (70%) in the parish are '**single, never married**'.

## Economy

- Of the 2011 population 3 percent **arrived** in the UK in the two years before the census, and 9 percent between 2001 and 2011.
- Most of the people (50%) in the parish declared their main economic activity as '**employed**', followed by 35 percent who declared being a student. The majority of those employed worked in the health industry, mainly in professional roles. Nearly a third of those in employment worked less than 30 hours per week.

## Families

- Of all households in the parish, 39 percent were occupied by a single **family**, 33 percent were one person households (including 7 percent of 'single, over 65') and 28 percent fell into 'other' category (mainly shared houses).
- Of the 'one family' households, 45 percent consisted of **married couples**, 32 percent were cohabiting and 17 percent were **lone parents**. Thirty-eight percent of the 'one family households' had dependent children, and 6 percent were families with all members aged over 65.
- In the parish area, 63 percent of households rented their accommodation, and 35 percent **did not** have access to car.

## Data coverage & accuracy

- Matched census areas covered 105 percent of the parish area.

# St Catherine of Sienna, Didsbury

*Parish Priest: Fr Brendan Wilson*

## Area & Population

- St Catherine's of Sienna parish covers the area of 496 hectares, and the average **population density** is 40 persons per hectare (based on matched Output Areas).
- The parish population size **remains fairly stable**. On 30<sup>th</sup> June 2014, the total number of usual residents was estimated at 19.5k. This is 1 percent (142 persons) higher than the Census 2011 estimate of 19.4k.
- Census 2011 estimated the total **number of households** in the parish at 8.2k.

## Demographics

- Most of the usual residents (35%) were aged between 36 and 64, followed by 32 percent aged between 18 and 35, with only 9 percent aged 7 years old or less.
- In the parish area, a half of the population declared their **religion as Christian**. Muslims accounted for 10 percent of the population, and 28 percent of all residents declared 'no religion'. The **Christian population decreased** in line with the decrease observed between 2001 and 2011 at the deanery level.
- Most people (45%) in the parish are '**single, never married**'.

## Economy

- Of the 2011 population 2 percent **arrived** in the UK in the two years before the census, and 7 percent between 2001 and 2011.
- Most of the people (68%) in the parish declared their main economic activity as '**employed**', followed by 11 percent who declared being a student. The majority of those employed worked in the health industry, mainly in professional roles. Twenty-three percent of those in employment worked less than 30 hours per week.

## Families

- Of all households in the parish, 57 percent were occupied by a single **family**, 31 percent were one person households (including 11 percent of 'single, over 65') and 12 percent fell into 'other' category (mainly shared houses).
- Of the 'one family' households, 53 percent consisted of **married couples**, 23 percent were cohabiting and 15 percent were **lone parents**. Forty-two percent of the 'one family' households had dependent children, and 10 percent were families with all members aged over 65.
- In the parish area, 36 percent of households rented their accommodation, and 22 percent **did not** have access to car.

## Data coverage & accuracy

- Matched census areas covered 99 percent of the parish area.

# St Joseph, Longsight

*Parish Priest: Fr Ian Farrell*

## Area & Population

- St Joseph's parish covers the area of 265 hectares, and the average **population density** is 81 persons per hectare (based on matched Output Areas).
- The parish population size **is growing**. On 30<sup>th</sup> June 2014, the total number of usual residents was estimated at 18.5k. This is 8 percent (1,290 persons) higher than the Census 2011 estimate of 17.2k.
- Census 2011 estimated the total **number of households** in the parish at 5.6k.

## Demographics

- Most of the usual residents (54%) were aged between 18 and 35, followed by 21 percent aged between 36 and 64, with only 6 percent aged over 65.
- In the parish area, 35 percent of the population declared their **religion as Christian**. Muslims accounted for 29 percent of the population, and just under a quarter of all residents declared 'no religion'. The **Christian population increased slightly**, despite the decrease observed between 2001 and 2011 at the deanery level.
- Most people (67%) in the parish are '**single, never married**'.

## Economy

- Of the 2011 population 10 percent **arrived** in the UK in the two years before the census, and 27 percent between 2001 and 2011.
- Most of the people (47%) in the parish declared their main economic activity as '**student**', followed by 28 percent declaring being in employment. The majority of those employed worked in the retail industry, mainly in elementary roles. Just over a half of those in employment worked less than 30 hours per week.

## Families

- Of all households in the parish, 39 percent were occupied by a single **family**, 36 percent were one person households (including 7 percent of 'single, over 65') and a quarter fell into 'other' category (mainly shared houses).
- Of the 'one family' households, 49 percent consisted of **married couples**, 13 percent were cohabiting and 34 percent were **lone parents**. Sixty percent of the 'one family' households had dependent children, and 4 percent were families with all members aged over 65.
- In the parish area, 79 percent of households rented their accommodation, and 60 percent **did not** have access to car.

## Data coverage & accuracy

- Matched census areas covered 86 percent of the parish area. Industrial areas in Ardwick are not included. This may result in slightly underestimated population size.

# St Richard, Longsight

*Parish Priest: Fr Michael Dever*

## Area & Population

- St Richard's parish covers the area of 213 hectares, and the average **population density** is 85 persons per hectare (based on matched Output Areas).
- The parish population size **is growing**. On 30<sup>th</sup> June 2014, the total number of usual residents was estimated at 19.6k. This is 2 percent (367 persons) higher than the Census 2011 estimate of 19.2k.
- Census 2011 estimated the total **number of households** in the parish at 6.4k.

## Demographics

- Most of the usual residents (33%) were aged between 18 and 35, followed by 28 percent aged between 36 and 64, with only 7 percent aged over 65.
- In the parish area, a quarter of the population declared their **religion as Christian**. Muslims accounted for 57 percent of the population, and 9 percent of all residents declared 'no religion'. The **Christian population decreased** in line with the decrease observed between 2001 and 2011 at the deanery level.
- Most people (45%) in the parish are '**married**'.

## Economy

- Of the 2011 population 7 percent **arrived** in the UK in the two years before the census, and 28 percent between 2001 and 2011.
- Most of the people (43%) in the parish declared their main economic activity as '**employed**', followed by 19 percent who declared being a student. The majority of those employed worked in the retail industry, mainly in elementary roles. Forty-six percent of those in employment worked less than 30 hours per week.

## Families

- Of all households in the parish, just over a half was occupied by a single **family**, 29 percent were one person households (including 7 percent of 'single, over 65') and 19 percent fell into 'other' category (mainly shared houses).
- Of the 'one family' households, 58 percent consisted of **married couples**, 10 percent were cohabiting and 28 percent were **lone parents**. Two-thirds of the 'one family' households had dependent children, and 4 percent were families with all members aged over 65.
- In the parish area, 57 percent of households rented their accommodation, and 47 percent **did not** have access to car.

## Data coverage & accuracy

- Matched census areas covered 108 percent of the parish area.

# St Mary, Levenshulme

*Parish Priest: Fr John Ahern*

## Area & Population

- St Mary's parish covers the area of 302 hectares, and the average **population density** is 65 persons per hectare (based on matched Output Areas).
- The parish population size **is growing**. On 30<sup>th</sup> June 2014, the total number of usual residents was estimated at 18.9k. This is 2 percent (310 persons) higher than the Census 2011 estimate of 18.6k.
- Census 2011 estimated the total **number of households** in the parish at 7.2k.

## Demographics

- Nearly two-thirds of the population was aged between 18 and 64, with roughly equal number of people between 18 and 35 and 36 to 64, with only 9 percent aged 65 and over.
- In the parish area, 39 percent of the population declared their **religion as Christian**. Muslims accounted for a third of the population, and a fifth of all residents declared 'no religion'. The **Christian population decreased** in line with the decrease observed between 2001 and 2011 at the deanery level.
- Most people (46%) in the parish are '**single, never married**'.

## Economy

- Of the 2011 population 5 percent **arrived** in the UK in the two years before the census, and 17 percent between 2001 and 2011.
- Most of the people (55%) in the parish declared their main economic activity as '**employed**', followed by 15 percent who declared being a student. The majority of those employed worked in the retail industry, mainly in professional roles. A third of those in employment worked less than 30 hours per week.

## Families

- Of all households in the parish, 52 percent were occupied by a single **family**, 32 percent were one person households (including 9 percent of 'single, over 65') and 16 percent fell into 'other' category (mainly shared houses).
- Of the 'one family' households, 52 percent consisted of **married couples**, 19 percent were cohabiting and 22 percent were **lone parents**. Just over a half of the 'one family' households had dependent children, and 7 percent were families with all members aged over 65.
- In the parish area, 43 percent of households rented their accommodation, and 38 percent **did not** have access to car.

## Data coverage & accuracy

- Matched census areas covered 96 percent of the parish area.

# St Bernard, Burnage

*Parish Priest: Msgr Michael Kujacz & Fr Michael Job*

## Area & Population

- St Bernard's parish covers the area of 207 hectares, and the average **population density** is 69 persons per hectare (based on matched Output Areas).
- The parish population size **is growing**. On 30<sup>th</sup> June 2014, the total number of usual residents was estimated at 13.4k. This is 2 percent (208 persons) higher than the Census 2011 estimate of 13.2k.
- Census 2011 estimated the total **number of households** in the parish at 4k.

## Demographics

- Nearly two-thirds of the population was aged between 18 and 64, with roughly equal number of people between 18 and 35 and 36 to 64, with only 11 percent aged 65 and over.
- In the parish area, a half of the population declared their **religion as Christian**. Muslims accounted for 21 percent of the population, and a fifth of all residents declared 'no religion'. The **Christian population decreased** in line with the decrease observed between 2001 and 2011 at the deanery level.
- Most people (49%) in the parish are '**single, never married**'.

## Economy

- Of the 2011 population 2 percent **arrived** in the UK in the two years before the census, and 10 percent between 2001 and 2011.
- Most of the people (49%) in the parish declared their main economic activity as '**employed**', followed by 19 percent who declared being a student. The majority of those employed worked in the retail industry, mainly in professional roles. Thirty-six percent of those in employment worked less than 30 hours per week.

## Families

- Of all households in the parish, 58 percent were occupied by a single **family**, just over a quarter were one person households (including 10 percent of 'single, over 65') and 16 percent fell into 'other' category (mainly shared houses).
- Of the 'one family' households, 43 percent consisted of **married couples**, 16 percent were cohabiting and a third were **lone parents**. Just over a half of the 'one family' households had dependent children, and 7 percent were families with all members aged over 65.
- In the parish area, 54 percent of households rented their accommodation, and 36 percent **did not** have access to car.

## Data coverage & accuracy

- Matched census areas covered 93 percent of the parish area.

# Sacred Heart and St Francis of Assisi, Gorton

*Parish Priest: Fr Andrew Stringfellow*

## Area & Population

- Sacred Heart's and St Francis' of Assisi parish covers the area of 445 hectares, and the average **population density** is 42 persons per hectare (based on matched Output Areas).
- The parish population size **is growing**. On 30<sup>th</sup> June 2014, the total number of usual residents was estimated at 21.1k. This is 3 percent (626 persons) higher than the Census 2011 estimate of 20.5k.
- Census 2011 estimated the total **number of households** in the parish at 8.6k.

## Demographics

- Most of the usual residents (33%) were aged between 36 and 64, followed by 27 percent aged between 18 and 35, with only 11 percent aged over 65.
- In the parish area, 59 percent of the population declared their **religion as Christian**. Muslims accounted for 9 percent of the population, and 22 percent of all residents declared 'no religion'. The **Christian population increased slightly**, despite the decrease observed between 2001 and 2011 at the deanery level.
- Most people (46%) in the parish are '**single, never married**'.

## Economy

- Of the 2011 population 3 percent **arrived** in the UK in the two years before the census, and 18 percent between 2001 and 2011.
- Most of the people (48%) in the parish declared their main economic activity as '**employed**', followed by 12 percent who declared being a student. The majority of those employed worked in the retail industry, mainly in elementary roles. Just over a third of those in employment worked less than 30 hours per week.

## Families

- Of all households in the parish, 52 percent were occupied by a single **family**, 37 percent were one person households (including 11 percent of 'single, over 65') and 11 percent fell into 'other' category (mainly shared houses).
- Of the 'one family' households, 37 percent consisted of **married couples**, 18 percent were cohabiting and 39 percent were **lone parents**. Sixty-two percent of the 'one family' households had dependent children, and 6 percent were families with all members aged over 65.
- In the parish area, 69 percent of households rented their accommodation, and 55 percent **did not** have access to car.

## Data coverage & accuracy

- Matched census areas covered 90 percent of the parish area

# Holy Family, Denton

*Parish Priest: Fr Christopher Dawson*

## Area & Population

- Holy Family's parish covers the area of 284 hectares, and the average **population density** is 60 persons per hectare (based on matched Output Areas).
- The parish population size **remains fairly stable**. On 30<sup>th</sup> June 2014, the total number of usual residents was estimated at 15.2k. This is the same as the Census 2011 estimate.
- Census 2011 estimated the total **number of households** in the parish at 6.6k.

## Demographics

- Most of the usual residents (39%) were aged between 36 and 64, followed by 23 percent aged between 18 and 35, with only 10 percent aged 7 years old or less.
- In the parish area, 68 percent of the population declared their **religion as Christian**. Muslims accounted for only 1 percent of the population, and nearly a quarter of all residents declared 'no religion'. The **Christian population decreased** in line with the decrease observed between 2001 and 2011 at the deanery level.
- Most people (44%) in the parish are '**married**'.

## Economy

- Of the 2011 population only 2 percent arrived in the UK between 2001 and 2011.
- Most of the people (66%) in the parish declared their main economic activity as '**employed**', followed by 14 percent who declared being retired. The majority of those employed worked in the retail industry, mainly in administrative roles. A quarter of those in employment worked less than 30 hours per week.

## Families

- Of all households in the parish, 63 percent were occupied by a single **family**, 32 percent were one person households (including 14 percent of 'single, over 65') and 5 percent fell into 'other' category (mainly shared houses).
- Of the 'one family' households, 48 percent consisted of **married couples**, 19 percent were cohabiting and 21 percent were **lone parents**. Forty-six percent of the 'one family' households had dependent children, and 13 percent were families with all members aged over 65.
- In the parish area, 22 percent of households rented their accommodation, and 25 percent **did not** have access to car.

## Data coverage & accuracy

- Matched census areas covered 90 percent of the parish area.



# St Joseph, Reddish

*Parish Priest: Canon Maurice O'Connell*

## Area & Population

- St Joseph's parish covers the area of 440 hectares, and the average **population density** is 39 persons per hectare (based on matched Output Areas).
- The parish population size **remains fairly stable**. On 30<sup>th</sup> June 2014, the total number of usual residents was estimated at 18k. This is only 1 percent (108 persons) lower than the Census 2011 estimate of 18.1k.
- Census 2011 estimated the total **number of households** in the parish at 7.9k.

## Demographics

- Most of the usual residents (40%) were aged between 36 and 64, followed by 23 percent aged between 18 and 35, with only 10 percent aged 7 years old or less.
- In the parish area, two-thirds of the population declared their **religion as Christian**. Muslims accounted for only 2 percent of the population, and a quarter of all residents declared 'no religion'. The **Christian population decreased** in line with the decrease observed between 2001 and 2011 at the deanery level.
- Most people (43%) in the parish are '**married**'.

## Economy

- Of the 2011 population only 2 percent arrived in the UK between 2001 and 2011.
- Most of the people (66%) in the parish declared their main economic activity as '**employed**', followed by 14 percent declaring being **retired**. The majority of those employed worked in the retail industry, mainly in administrative roles. Twenty-seven percent of those in employment worked less than 30 hours per week.

## Families

- Of all households in the parish, 64 percent were occupied by a single **family**, 31 percent were one person households (including 12 percent of 'single, over 65') and 6 percent fell into 'other' category (mainly shared houses).
- Of the 'one family' households, 49 percent consisted of **married couples**, 18 percent were cohabiting and 23 percent were **lone parents**. Forty-four percent of the 'one family' households had dependent children, and 10 percent were families with all members aged over 65.
- In the parish area, 27 percent of households rented their accommodation, and 26 percent **did not** have access to car.

## Data coverage & accuracy

- Matched census areas covered 104 percent of the parish area.

# St Mary, Heaton Norris

*Parish Priest: Sacred Heart Fathers*

## Area & Population

- St Mary's parish covers the area of 313 hectares, and the average **population density** is 40 persons per hectare (based on matched Output Areas).
- The parish population size **is growing**. On 30<sup>th</sup> June 2014, the total number of usual residents was estimated at 11.5k. This is 2 percent (218 persons) higher than the Census 2011 estimate of 11.3k.
- Census 2011 estimated the total **number of households** in the parish at 5.5k.

## Demographics

- Most of the usual residents (40%) were aged between 36 and 64, followed by 26 percent aged between 18 and 35, with only 9 percent aged 7 years old or less.
- In the parish area, 59 percent of the population declared their **religion as Christian**. Muslims accounted for 3 percent of the population, and 30 percent of all residents declared 'no religion'. The **Christian population decreased** in line with the decrease observed between 2001 and 2011 at the deanery level.
- Most people (43%) in the parish are '**single, never married**'.

## Economy

- Of the 2011 population only 3 percent arrived in the UK between 2001 and 2011.
- Most of the people (63%) in the parish declared their main economic activity as '**employed**', followed by 12 percent declaring being retired. The majority of those employed worked in the retail industry, mainly in professional roles. Twenty-six percent of those in employment worked less than 30 hours per week.

## Families

- Of all households in the parish, just over a half were occupied by a single **family**, 43 percent were one person households (including 12 percent of 'single, over 65') and 5 percent fell into 'other' category (mainly shared houses).
- Of the 'one family' households, 44 percent consisted of **married couples**, 23 percent were cohabiting and 24 percent were **lone parents**. Forty-five percent of the 'one family' households had dependent children, and 10 percent were families with all members aged over 65.
- In the parish area, 45 percent of households rented their accommodation, and 37 percent **did not** have access to car.

## Data coverage & accuracy

- Matched census areas covered 91 percent of the parish area.

# St Winifred, Heaton Mersey

*Parish Priest: Msgr Michael Quinlan & Fr Michael Foley*

## Area & Population

- St Winifred's parish covers the area of 575 hectares, and the average **population density** is 36 persons per hectare (based on matched Output Areas).
- The parish population size **is growing**. On 30<sup>th</sup> June 2014, the total number of usual residents was estimated at 21.6k. This is 2 percent (362 persons) higher than the Census 2011 estimate of 21.3k.
- Census 2011 estimated the total **number of households** in the parish at 9k.

## Demographics

- Most of the usual residents (41%) were aged between 36 and 64, followed by 21 percent aged between 18 and 35, with only 9 percent aged 7 years old or less.
- In the parish area, 57 percent of the population declared their **religion as Christian**. Muslims accounted for 8 percent of the population, and a quarter of all residents declared 'no religion'. The **Christian population decreased** in line with the decrease observed between 2001 and 2011 at the deanery level.
- Most people (49%) in the parish are '**married**'.

## Economy

- Of the 2011 population only 3 percent arrived in the UK between 2001 and 2011.
- Most of the people (69%) in the parish declared their main economic activity as '**employed**', followed by 13 percent declaring being retired. The majority of those employed worked in the education industry, mainly in professional roles. Just over a quarter of those in employment worked less than 30 hours per week.

## Families

- Of all households in the parish, 61 percent were occupied by a single **family**, just over a quarter were one person households (including 13 percent of 'single, over 65') and 5 percent fell into 'other' category (mainly shared houses).
- Of the 'one family' households, 59 percent consisted of **married couples**, 15 percent were cohabiting and 14 percent were **lone parents**. Forty-three percent of the 'one family' households had dependent children, and 12 percent were families with all members aged over 65.
- In the parish area, 21 percent of households rented their accommodation, and 17 percent **did not** have access to car.

## Data coverage & accuracy

- Matched census areas covered 105 percent of the parish area.

# St Mary and St John Fisher, Denton

*Parish Priest: Fr Peter Kinsella*

## Area & Population

- St Mary's and St John Fisher's parish covers the area of 1225 hectares, and the average **population density** is 27 persons per hectare (based on matched Output Areas).
- The parish population size **remains fairly stable**. On 30<sup>th</sup> June 2014, the total number of usual residents was estimated at 33.7k. This is nearly the same as the Census 2011 estimate.
- Census 2011 estimated the total **number of households** in the parish at 15k.

## Demographics

- Most of the usual residents (39%) were aged between 36 and 64, followed by 22 percent aged between 18 and 35, with only 9 percent aged 7 years old or less.
- In the parish area, two-thirds of the population declared their **religion as Christian**. Muslims accounted for only 1 percent of the population, and a quarter of all residents declared 'no religion'. The **Christian population decreased** in line with the decrease observed between 2001 and 2011 at the deanery level.
- Most people (41%) in the parish are '**married**'.

## Economy

- Of the 2011 population only 2 percent arrived in the UK between 2001 and 2011.
- Most of the people (61%) in the parish declared their main economic activity as '**employed**', followed by 16 percent declaring being retired. The majority of those employed worked in the retail industry, mainly in administrative roles. Twenty-six percent of those in employment worked less than 30 hours per week.

## Families

- Of all households in the parish, 61 percent were occupied by a single **family**, 34 percent were one person households (including 14 percent of 'single, over 65') and 5 percent fell into 'other' category (mainly shared houses).
- Of the 'one family' households, 46 percent consisted of **married couples**, 18 percent were cohabiting and 23 percent were **lone parents**. Forty-three percent of the 'one family' households had dependent children, and 13 percent were families with all members aged over 65.
- In the parish area, 35 percent of households rented their accommodation, and 30 percent **did not** have access to car.

## Data coverage & accuracy

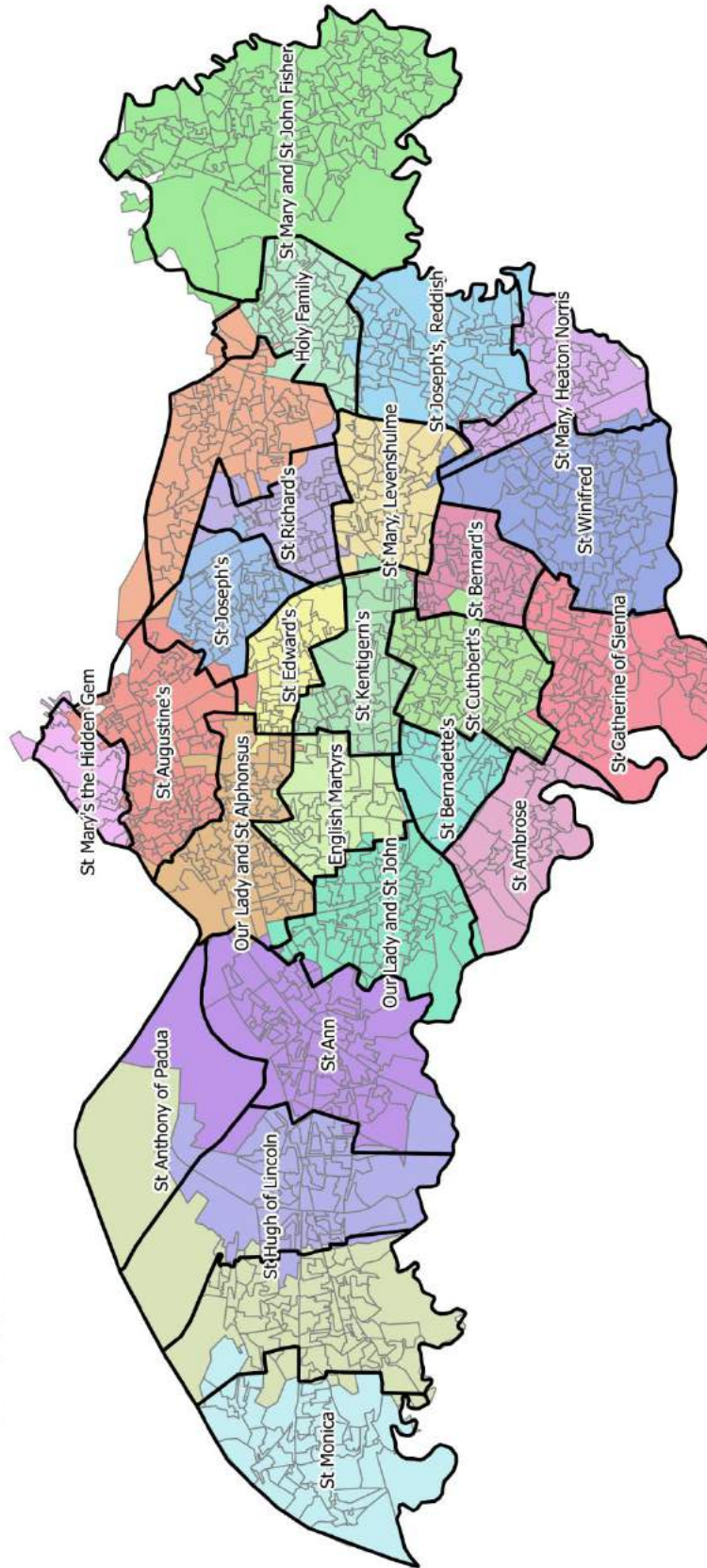
- Matched census areas covered 102 percent of the parish area.

# Annex A: Maps

Map 1: Allocation of Output Areas to individual parishes

## Output Area coverage

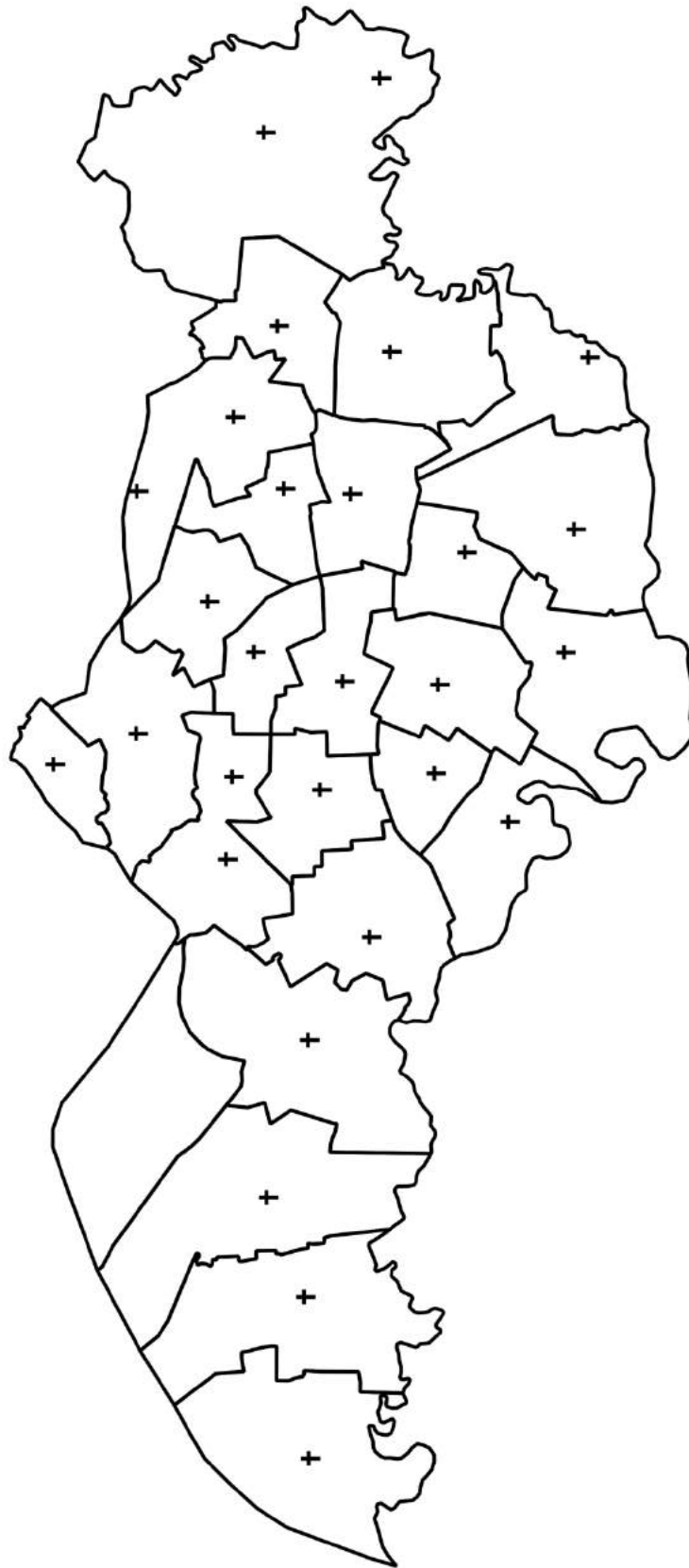
*This map shows the output areas used for each parish to produce the estimates. The match is generally good, however there are few instances where it was not possible to align Output Area and parish boundaries - this is mainly the case for more sparsely populated areas.*



**Map 2: Location of church buildings**

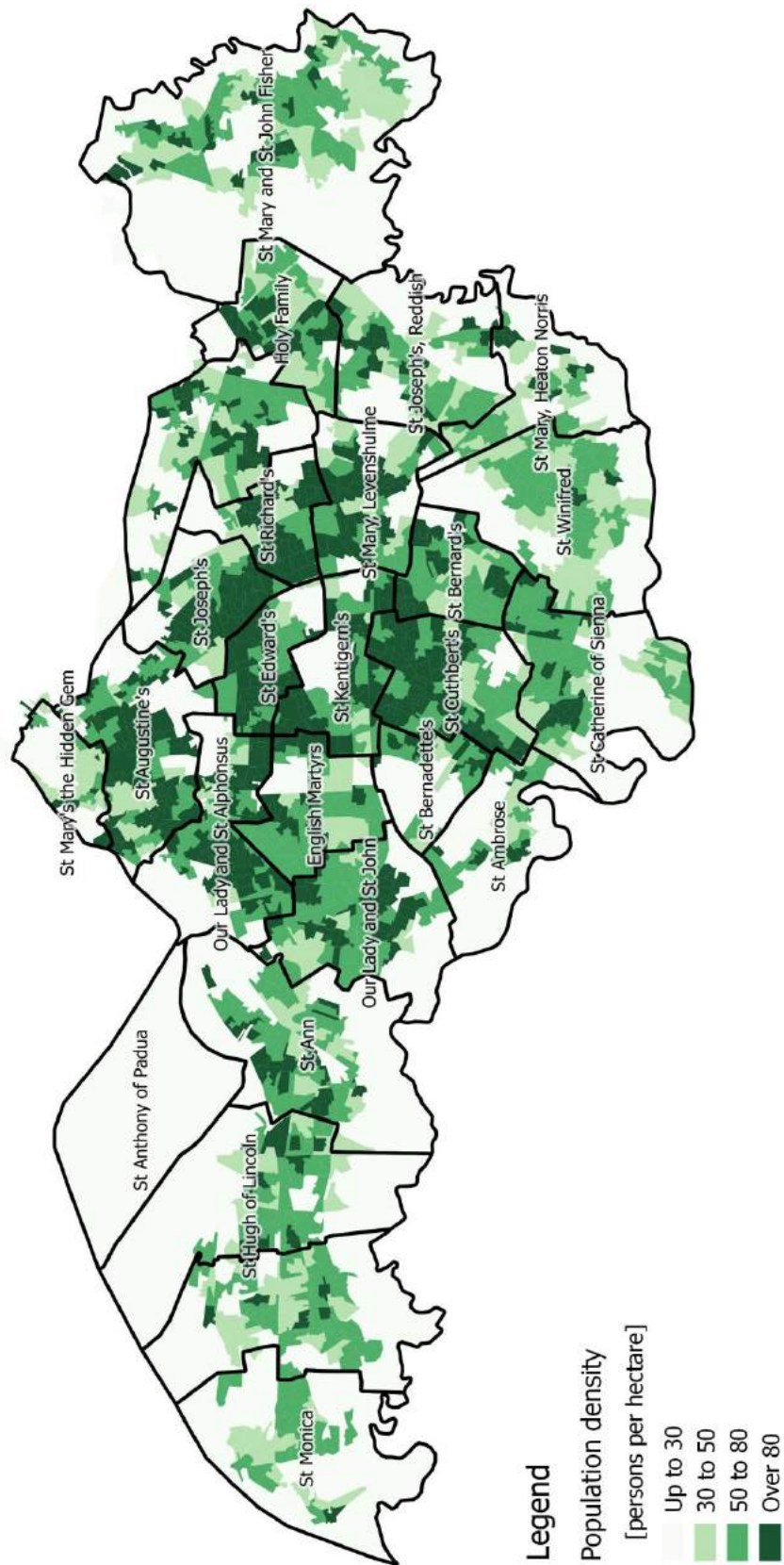
**Location of churches**

*This map shows the location of churches in each parish in the deanery.*



## Population density 2014

*This map shows the population density, based on 2014 population estimate at the Output Area level. The density is expressed on number of persons per hectare.*

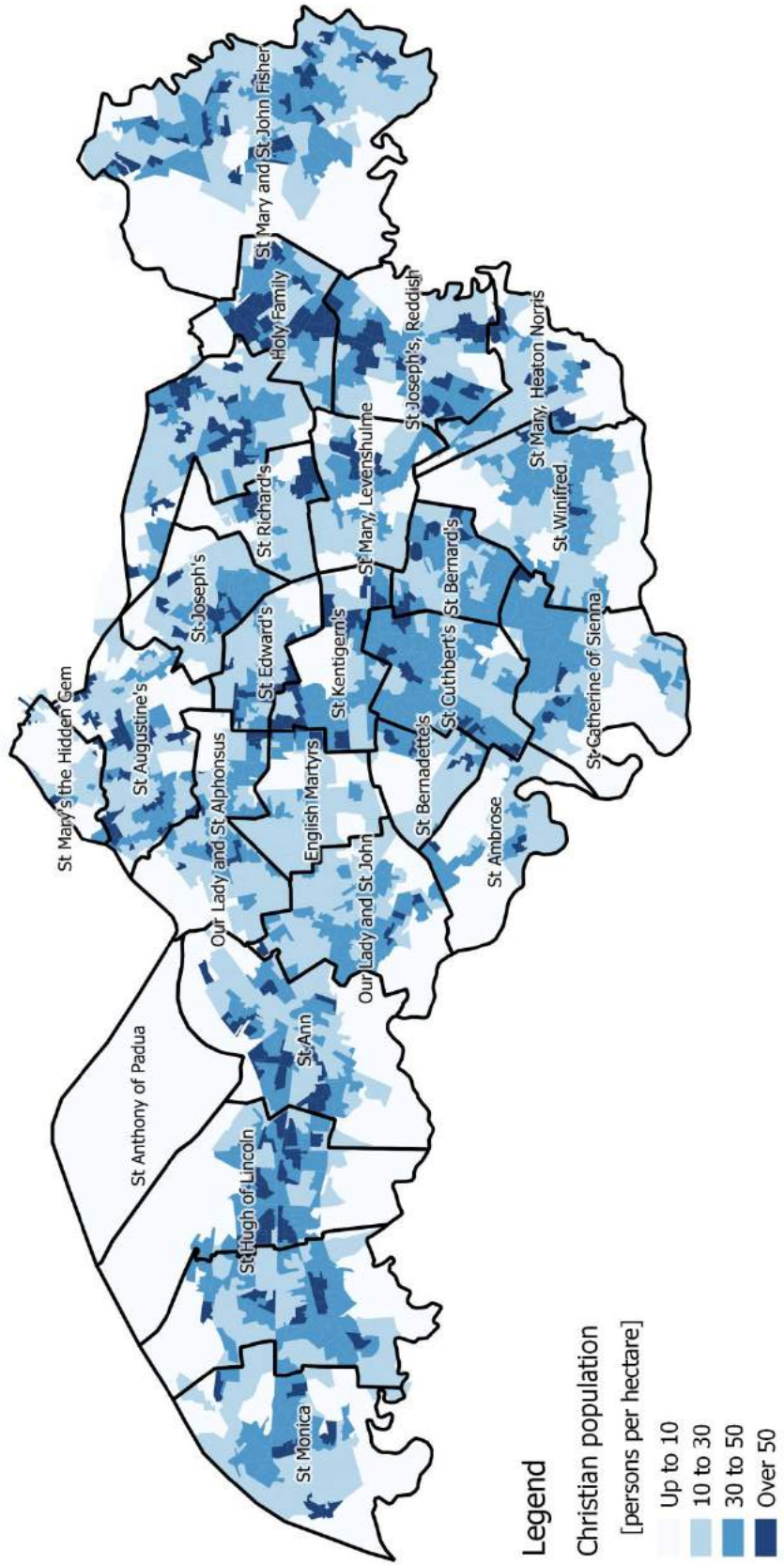


Map 3: Population density, 2014

Map 4: Christian population density, 2011

### Christian population 2011

*This map shows the Christian population density, based on 2011 Census estimates at the Output Area level. The density is expressed on number of persons per hectare.*

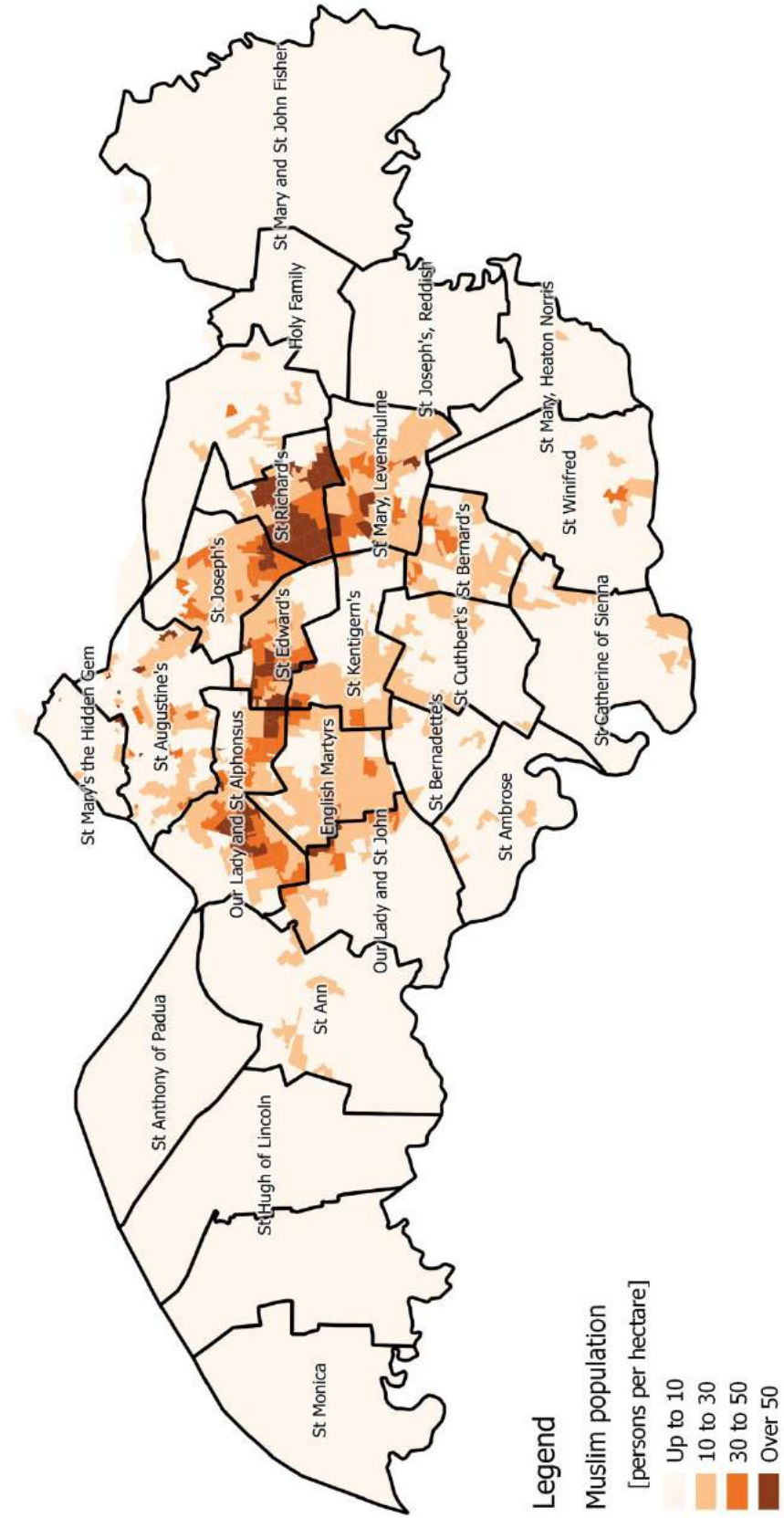




Map 5: Muslim population density

### Muslim population 2011

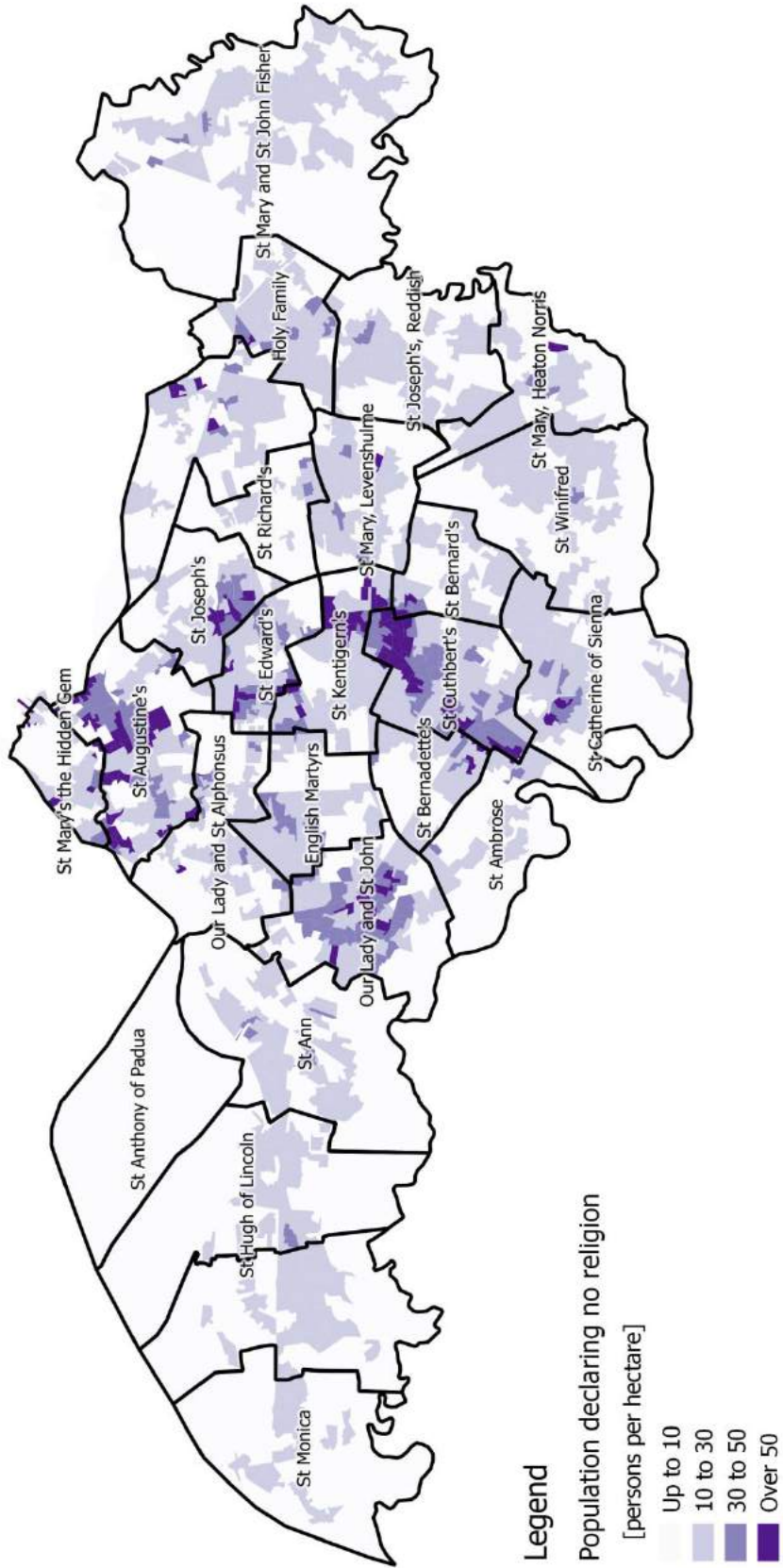
*This map shows the Muslim population density, based on 2011 Census estimates at the Output Area level. The density is expressed on number of persons per hectare.*



Map 6: Density of the population declaring no religion, 2011

### Population declaring 'no religion' 2011

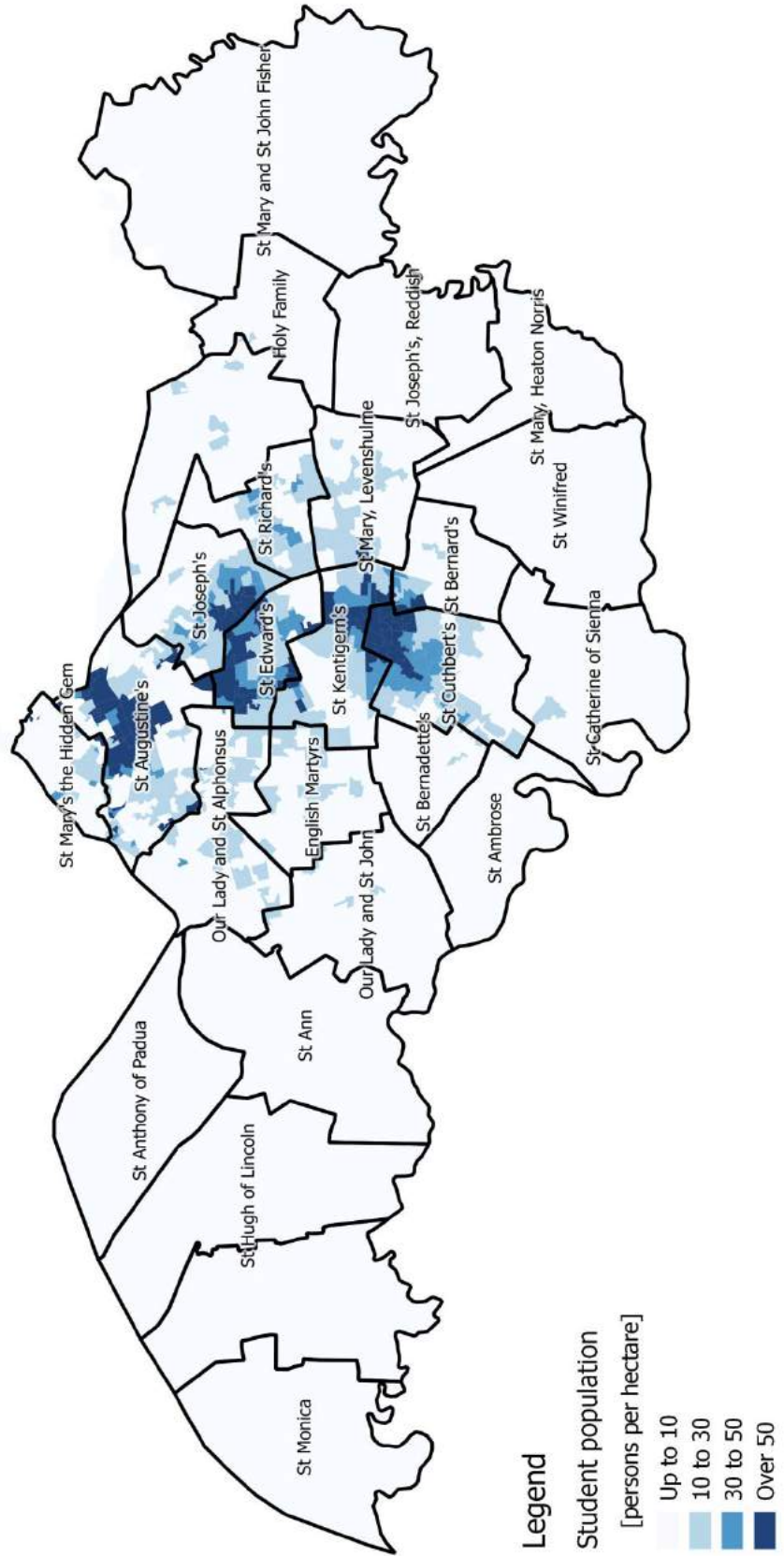
This map shows the density of the population declaring 'no religion', based on 2011 Census estimates at the Output Area level. The density is expressed on number of persons per hectare.



Map 7: Student population density, 2011

### Student population 2011

*This map shows the density of the student population, based on 2011 Census estimates at the Output Area level. The density is expressed on number of persons per hectare.*



## **Annex B: Data limitations**

### **Timeliness**

The population size for each parish is based on mid-2014 estimates (30<sup>th</sup> June 2014). Remaining analysis is based on Census 2011 data and hence captures the population characteristics as they were on 27<sup>th</sup> March 2011. The socio-demographic characteristics of the population could have changed between then and the time of writing of this report. Some areas, for example where there is a lot of newly built houses or significant student or migrant population will be more dynamic, hence changes over time may be more significant.

### **Coverage**

Good geographical coverage has been achieved when matching statistical areas to most parish areas, mainly because both statistical area boundaries and parish boundary tend not to cut across main roads. More sparsely populated areas in Trafford were more difficult to match. Since extra area included or removed is mainly industrial, it is thought that population characteristics are not significantly affected. The reported overall population density for affected parishes is most likely an underestimate.

### **Non- response**

Like any survey, Census also faces issues with non-response. Due to ONS efforts, this is very low, at about 5% nationally. The lowest disaggregation of non-response statistic was available at the Local Authority Level and for the Manchester City it was 89%. This may be slightly different for smaller areas within Local Authority.

### **Accuracy and correctness**

The answers to Census questionnaire reflect respondents' perception and it is possible that some of the answers are incorrect, due to genuine mistakes or deception. Some of the respondents could also refuse to answer some of the questions. ONS has a methodology for checking responses for internal consistency and removes inconsistent or clearly incorrect entries. This in turn means that the base population for each characteristic may be slightly different.

### **Depth**

In theory, if the census questionnaire data were fully published, it would be possible to conduct more detailed analysis, looking at for example the age profile of individuals declaring particular religion. However, due to concerns over anonymity of the datasets and practicalities of providing access to such large and detailed datasets, Census data go only one layer deep (i.e. can see proportion of religion in each OA, but not religion by age even for a wider area).

# Annex C: Data tables

**Table 1. Number and selected characteristics of households**

Households							
Parish ID	Parish name	Total number	No access to car	Rented accommodation	One family	One person	Other
A001	St Monica	5,774	972	1,049	3,929	1,568	277
A002	Our Lady and the English Martyrs	7,841	1,489	1,602	5,121	2,321	399
A003	St Hugh of Lincoln	6,841	1,652	2,013	4,480	1,973	388
A005	St Ann	9,133	2,973	3,525	5,245	3,095	793
A006	Our Lady and St Alphonsus	9,284	4,475	5,981	4,539	3,283	1,462
A007	Our Lady and St John	10,159	2,529	3,932	5,375	3,196	1,588
A008	St Mary the Hidden Gem	3,410	1,781	2,326	933	1,629	848
A009	St Augustine	12,559	7,353	9,828	3,992	5,557	3,010
A010	English Martyrs	6,478	2,395	3,842	2,965	2,420	1,093
A011	St Bernadette	3,562	1,154	2,116	1,776	1,285	501
A012	St Ambrose	4,199	1,323	2,182	2,121	1,520	558
A013	St Edward	5,648	3,503	4,313	1,861	2,022	1,765
A014	St Kentigern	6,606	3,083	4,537	2,691	1,695	2,220
A015	St Cuthbert	10,920	3,843	6,875	4,260	3,595	3,065
A016	St Catherine of Sienna	8,247	1,788	2,942	4,679	2,578	990
A017	St Joseph, Longsight	5,571	3,326	4,395	2,161	2,020	1,390
A018	St Richard	6,365	3,018	3,610	3,345	1,821	1,199
A019	St Mary, Levenshulme	7,163	2,700	3,112	3,716	2,315	1,132
A020	St Bernard	4,899	1,779	2,649	2,822	1,291	786
A021	Sacred Heart and St Francis of Assisi	8,641	4,742	5,929	4,536	3,177	928
A022	Holy Family	6,596	1,660	1,466	4,147	2,092	357
A023	St Joseph, Reddish	7,859	2,036	2,136	4,998	2,422	439
A024	St Mary, Heaton Norris	5,478	2,054	2,452	2,822	2,370	286
A025	St Winifred	9,097	1,587	1,945	5,577	3,064	456
A026	St Mary and St John Fisher	15,047	4,542	5,284	9,161	5,128	758

**Table 2: Selected characteristics of one family and one person households**

Parish ID	Parish name	Households			Of one family households			One person households	
		One family	Married couples	Cohabiting couples	Lone Parents	With dependant children ( <i>married, cohabiting or lone parents</i> )	All members over 65	Over 65	
A001	St Monica	3,929	2,256	503	601	1,640	569	823	
A002	Our Lady and the English Martyrs	5,121	2,944	687	771	2,204	719	1,119	
A003	St Hugh of Lincoln	4,480	2,273	726	1,011	2,083	470	854	
A005	St Ann	5,245	2,515	966	1,342	2,520	422	1,110	
A006	Our Lady and St Alphonsus	4,539	2,037	655	1,612	2,654	235	825	
A007	Our Lady and St John	5,375	2,733	1,552	740	2,347	350	945	
A008	St Mary the Hidden Gem	933	294	595	34	101	10	48	
A009	St Augustine	3,992	1,299	1,674	927	1,484	92	595	
A010	English Martyrs	2,965	1,455	676	691	1,578	143	402	
A011	St Bernadette	1,776	641	491	560	856	84	315	
A012	St Ambrose	2,121	857	558	587	1,015	119	423	
A013	St Edward	1,861	889	315	580	1,049	77	442	
A014	St Kentigern	2,691	1,177	431	924	1,455	159	508	
A015	St Cuthbert	4,260	1,918	1,352	728	1,621	262	806	
A016	St Catherine of Sienna	4,679	2,468	1,062	697	1,957	452	928	
A017	St Joseph, Longsight	2,161	1,049	291	729	1,307	92	415	
A018	St Richard	3,345	1,947	326	940	2,193	132	477	
A019	St Mary, Levenshulme	3,716	1,917	720	835	1,942	244	610	
A020	St Bernard	2,822	1,217	464	937	1,473	204	505	
A021	Sacred Heart and St Francis of Assisi	4,536	1,676	815	1,775	2,802	270	973	
A022	Holy Family	4,147	1,998	769	852	1,915	528	934	
A023	St Joseph, Reddish	4,998	2,449	903	1,127	2,210	519	946	
A024	St Mary, Heaton Norris	2,822	1,233	656	664	1,264	269	676	
A025	St Winifred	5,577	3,278	855	771	2,410	673	1,216	
A026	St Mary and St John Fisher	9,161	4,185	1,671	2,129	3,957	1,176	2,142	

**Table 3. Population estimates, 2014 and 2011 and religion, 2011**

Parish ID	Parish name	Population estimates				Religion (2011)			
		2014	2011	2011, (residents over 16)	2011, (working age population)	Christian	Muslim	No religion	Other and not stated
A001	St Monica	14,234	13,938	11,347	10,115	10,262	111	2,604	961
A002	Our Lady and the English Martyrs	18,968	18,732	15,304	13,545	13,442	180	3,808	1,302
A003	St Hugh of Lincoln	16,676	16,348	13,002	11,842	11,016	629	3,374	1,329
A005	St Ann	21,728	21,281	16,924	15,558	12,500	1,862	4,674	2,245
A006	Our Lady and St Alphonsus	24,315	23,691	17,668	16,616	8,441	8,610	3,988	2,652
A007	Our Lady and St John	24,110	24,451	20,122	18,796	9,506	3,538	8,669	2,738
A008	St Mary the Hidden Gem	6,178	5,684	5,482	5,456	2,112	491	2,413	668
A009	St Augustine	35,693	32,878	30,155	29,701	12,319	4,043	12,362	4,154
A010	English Martyrs	16,498	16,458	12,995	12,311	5,325	5,180	3,935	2,018
A011	St Bernadette	8,239	7,906	6,438	6,033	3,889	906	2,269	842
A012	St Ambrose	9,329	9,410	7,653	7,116	4,622	852	2,840	1,096
A013	St Edward	16,681	16,651	14,273	13,865	5,295	4,858	4,254	2,244
A014	St Kentigern	22,842	21,959	19,025	18,377	9,379	3,453	6,793	2,334
A015	St Cuthbert	27,701	27,438	24,479	23,509	11,223	2,479	10,496	3,240
A016	St Catherine of Sienna	19,545	19,403	16,063	14,720	9,899	1,953	5,350	2,201
A017	St Joseph, Longsight	18,457	17,167	14,200	13,728	6,079	5,012	3,987	2,089
A018	St Richard	19,556	19,189	13,715	13,096	4,805	10,968	1,666	1,750
A019	St Mary, Levenshulme	18,890	18,580	14,390	13,580	7,230	6,043	3,664	1,643
A020	St Bernard	13,383	13,175	10,195	9,517	6,577	2,828	2,647	1,123
A021	Sacred Heart and St Francis of Assisi	21,079	20,453	15,166	14,146	12,073	1,900	4,525	1,955
A022	Holy Family	15,231	15,178	12,183	10,964	10,361	224	3,625	968
A023	St Joseph, Reddish	18,022	18,130	14,602	13,401	12,012	359	4,500	1,259
A024	St Mary, Heaton Norris	11,478	11,260	9,320	8,540	6,615	346	3,369	930
A025	St Winifred	21,643	21,281	17,347	15,474	12,204	1,805	5,255	2,017
A026	St Mary and St John Fisher	33,744	33,600	27,462	24,826	22,657	317	8,266	2,360